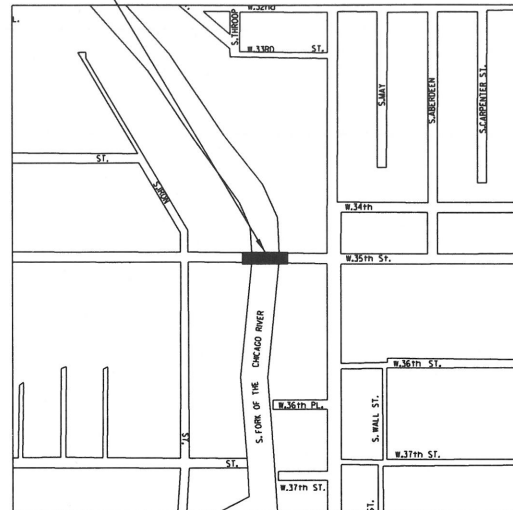


PROJECT LOCATION



PROJECT MAP

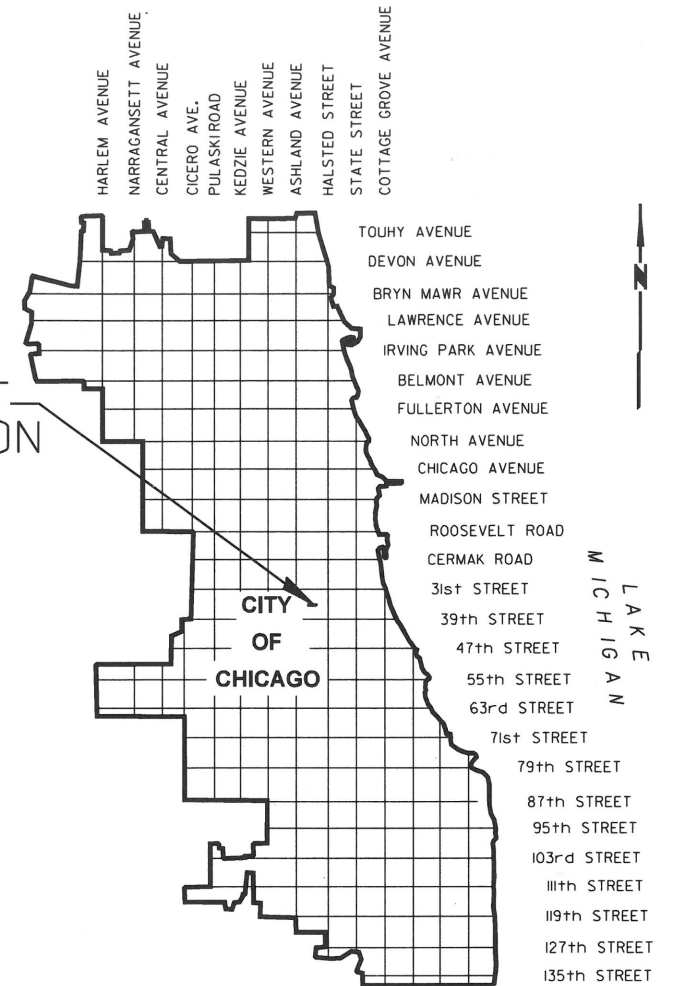
CITY OF CHICAGO
RAHM EMANUEL
MAYOR



DEPARTMENT OF TRANSPORTATION
REBEKAH SCHEINFELD, COMMISSIONER

DIVISION OF ENGINEERING
DANIEL BURKE, S.E., P.E., DEPUTY COMMISSIONER

PROJECT LOCATION



CONTRACT DOCUMENTS FOR
FOR

35TH STREET
OVER

THE SOUTH FORK OF THE SOUTH BRANCH
OF THE CHICAGO RIVER
STRUCTURAL REPAIRS
STRUCTURE NUMBER 016-6092

CDOT PROJECT NO.: E-6-638



Signed:
Date:
Exp:

Tom Thompson
2/19/2018
11/30/2018

CITY OF CHICAGO
DEPARTMENT OF TRANSPORTATION
DIVISION OF ENGINEERING

DATE: _____

APPROVED: _____ PROJECT ENGINEER

APPROVED: _____ CHIEF ENGINEER - BRIDGES

APPROVED: _____ DEPUTY COMMISSIONER


APPROVED: _____ COMMISSIONER

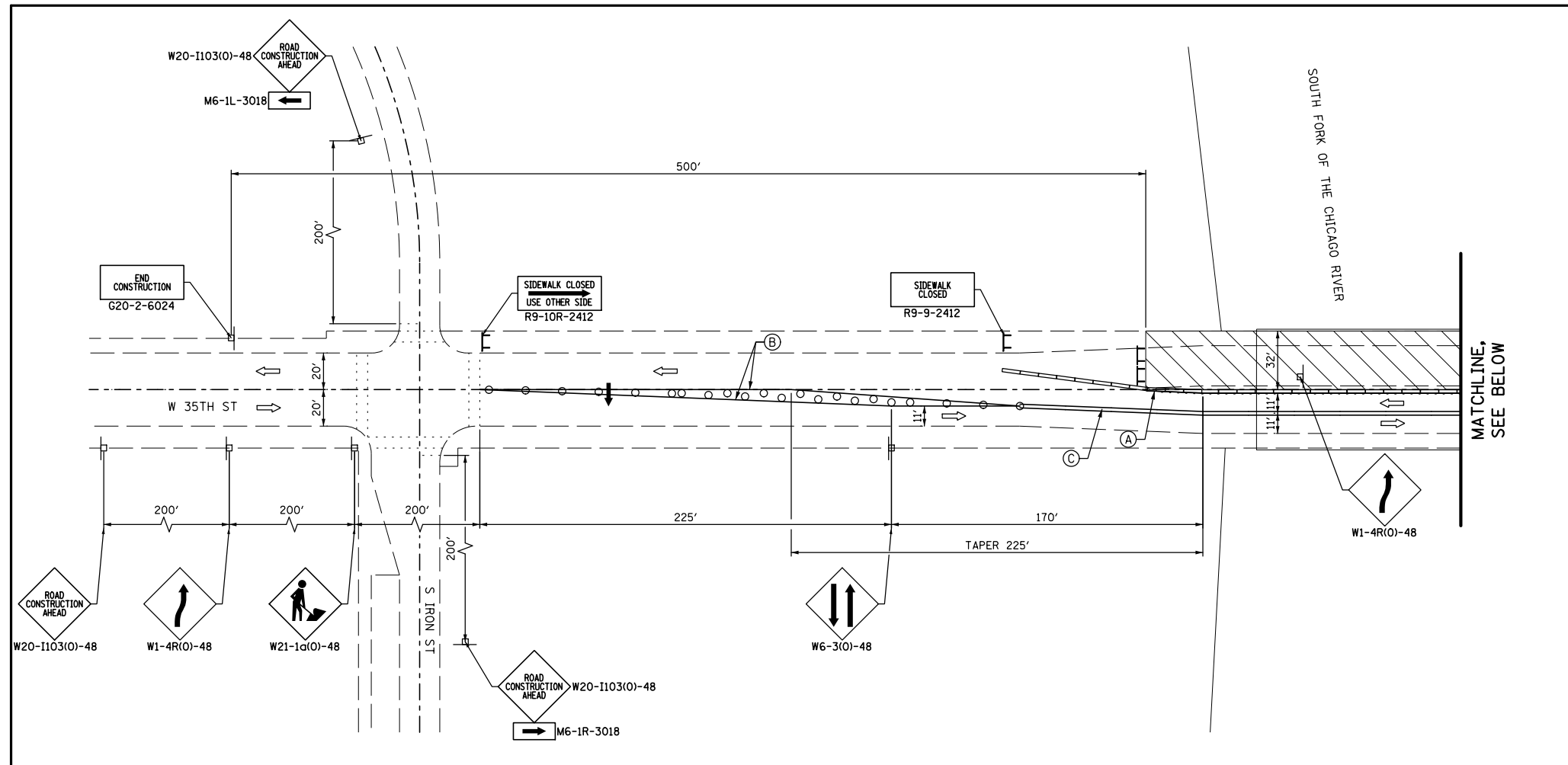
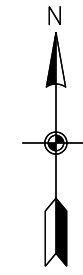
INDEX OF SHEETS

SHEET NO.	TITLE OF SHEET
G-1	COVER
G-2	GENERAL NOTES
G-3	INDEX OF SHEETS AND SUMMARY OF QUANTITIES
MOT-1	MAINTENANCE OF TRAFFIC STAGE 1
MOT-2	MAINTENANCE OF TRAFFIC STAGE 2
S-1	GENERAL PLAN AND ELEVATION
S-2	DECK SLAB REPAIRS
S-3	CONSTRUCTION STAGING
S-4	REINFORCEMENT PLAN
S-5	DECK SECTIONS
S-6	DECK SECTIONS AND DETAILS
S-7	BAR SPLICER ASSEMBLY AND MECHANICAL SPLICER DETAILS
S-8	EXPANSION JOINT DETAILS
S-9	PARTIAL FRAMING PLAN & STRINGER REPAIR DETAILS
S-10	STEEL GIRDER REPAIR DETAILS
S-11	RIVER PIER REPAIRS

SUMMARY OF QUANTITIES

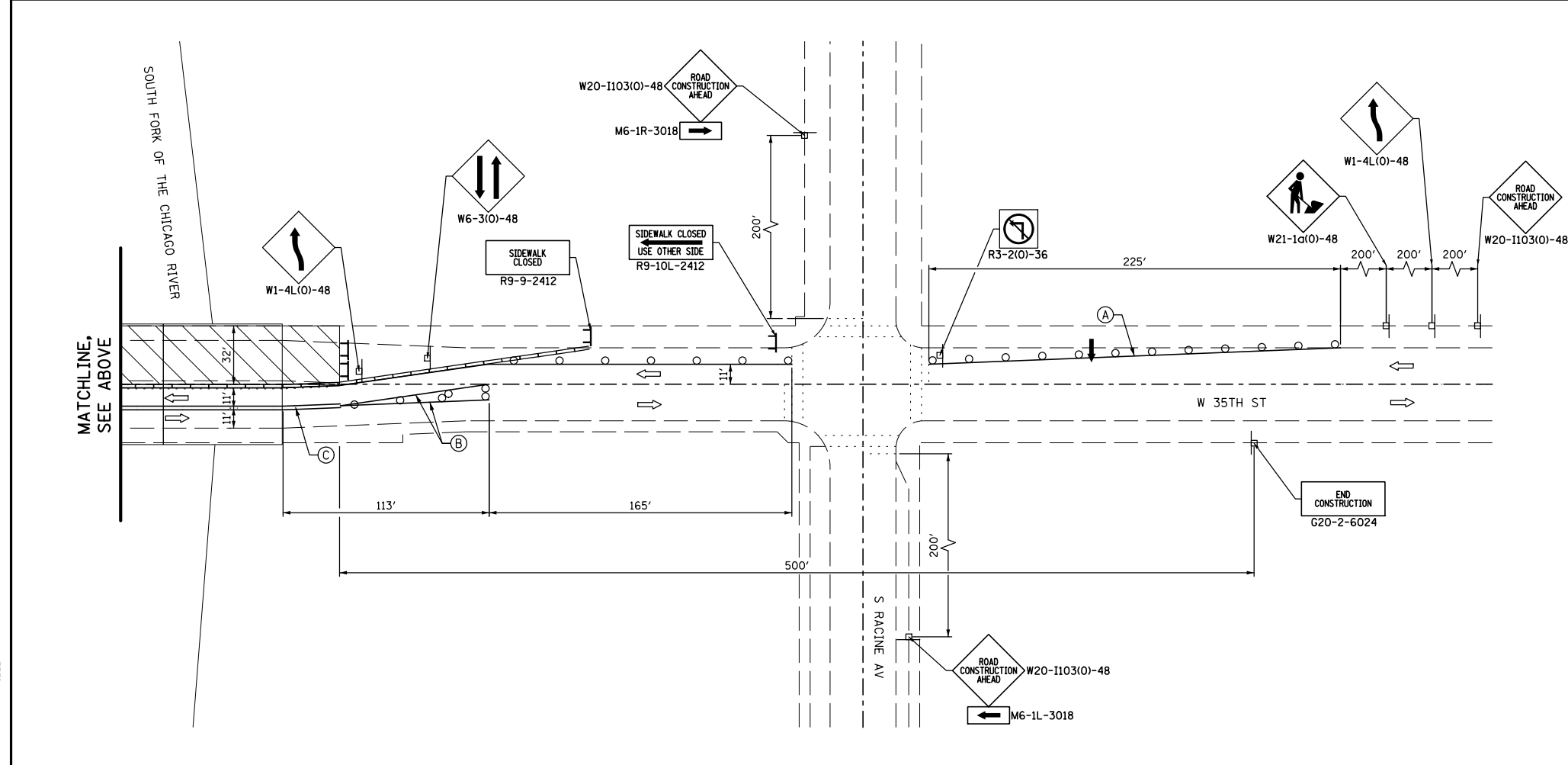
ITEM NO.	IDOT CODE	ITEM DESCRIPTION	UNIT OF MEASURE	QUANTITY
1	67100100	MOBILIZATION	LSUM	1
2	*****	TRAFFIC CONTROL AND PROTECTION	L SUM	1
3	70300220	TEMPORARY PAVEMENT MARKING - LINE 4"	FOOT	4211
4	70400100	TEMPORARY CONCRETE BARRIER	FOOT	513
5	70400200	RELOCATE TEMPORARY CONCRETE BARRIER	FOOT	513
6	67000500	ENGINEER'S FIELD OFFICE, TYPE B	CAL MO	3
7	Z0004556	HOT-MIX ASPHALT SURFACE REMOVAL (DECK)	SQ YD	22
8	X0327980	PAVEMENT MARKING REMOVAL - WATER BLASTING	SQ FT	1852
9	44213200	SAW CUTS	FOOT	91
10	50102400	CONCRETE REMOVAL	CU YD	9.9
11	*****	STRUCTURAL STEEL REMOVAL	POUND	3730
12	78000200	THERMOPLASTIC PAVEMENT MARKING - LINE 4"	FOOT	939
13	78000600	THERMOPLASTIC PAVEMENT MARKING - LINE 12"	FOOT	10
14	40603340	HOT-MIX ASPHALT SURFACE COURSE, MIX "D", N70	TON	2.5
15	50300255	CONCRETE SUPERSTRUCTURE	CU YD	9.9
16	Z0016002	DECK SLAB REPAIR (FULL DEPTH, TYPE II)	SQ YD	22
17	Z0012754	STRUCTURAL REPAIR OF CONCRETE (DEPTH EQUAL TO OR LESS THAN 5 INCHES)	SQ FT	146
18	*****	BRIDGE SIDEWALK REPAIR (PARTIAL DEPTH)	SQ FT	1015
19	50800205	REINFORCEMENT BARS, EPOXY COATED	POUND	1360
20	50800530	MECHANICAL SPLICERS	EA	32
21	52000030	PREFORMED JOINT SEAL 2 1/2"	FOOT	46
22	*****	STRUCTURAL STEEL REPAIR	POUND	6670
23	Z0010501	CLEANING AND PAINTING STEEL BRIDGE NO. 1	L SUM	1
24	Z0007114	CONTAINMENT AND DISPOSAL OF NON-LEAD PAINT CLEANING RESIDUES	L SUM	1
25	*****	CLEANING BRIDGE SEATS	SQ FT	220
26	*****	FURNISH & INSTALL PROJECT SIGN	EA	2

REVISIONS			
NO.	BY	DATE	DESCRIPTION
<p align="center">35TH STREET OVER THE SOUTH FORK OF THE SOUTH BRANCH OF THE CHICAGO RIVER STRUCTURE NUMBER 016-6092</p>			
<p align="center">INDEX OF SHEETS AND SUMMARY OF QUANTITIES</p>			
CONSULTANT			
			
CITY OF CHICAGO			
DEPARTMENT OF TRANSPORTATION			
DIVISION OF ENGINEERING			
DRAWN	JRK/LK	SHEET NO.	
CHECKED	APC	<p align="center">G-3</p> <p align="center">3 OF 16 SHEETS</p>	
APPROVED	TAT		
DATE	09-29-2017		
SCALE	NTS		
CONTRACT NO.		PROJECT NO. E-6-638	



STAGE 1 NOTES

1. THE CONTRACTOR SHALL MAINTAIN A MINIMUM 11' CLEAR WIDTH OF TRAFFIC LANE FOR TRAFFIC FLOW.
2. THE CONTRACTOR SHALL MAINTAIN TRAFFIC IN ACCORDANCE WITH THE SPECIAL PROVISIONS, STATE STANDARDS, STANDARD SPECIFICATIONS, AND AS DIRECTED BY THE ENGINEER.
3. THE ENGINEER SHALL BE INFORMED 48 HOURS IN ADVANCE OF ANY CHANGE IN CONSTRUCTION STAGING.
4. TYPE I BARRICADES SHALL BE EQUIPPED WITH MONO-DIRECTIONAL STEADY BURN LIGHTS AND SHALL BE PLACED ALONG THE PROPOSED WORK ZONE AND WITHIN TAPER SECTIONS AS INDICATED ON THE PLANS OR AS DIRECTED BY THE ENGINEER.
5. THE CONTRACTOR SHALL REMOVE ALL EXISTING PAVEMENT MARKINGS, COVER SIGNS AND OTHER DEVICES IN CONFLICT WITH THE DESIGNATED TRAFFIC CONTROL PLAN.



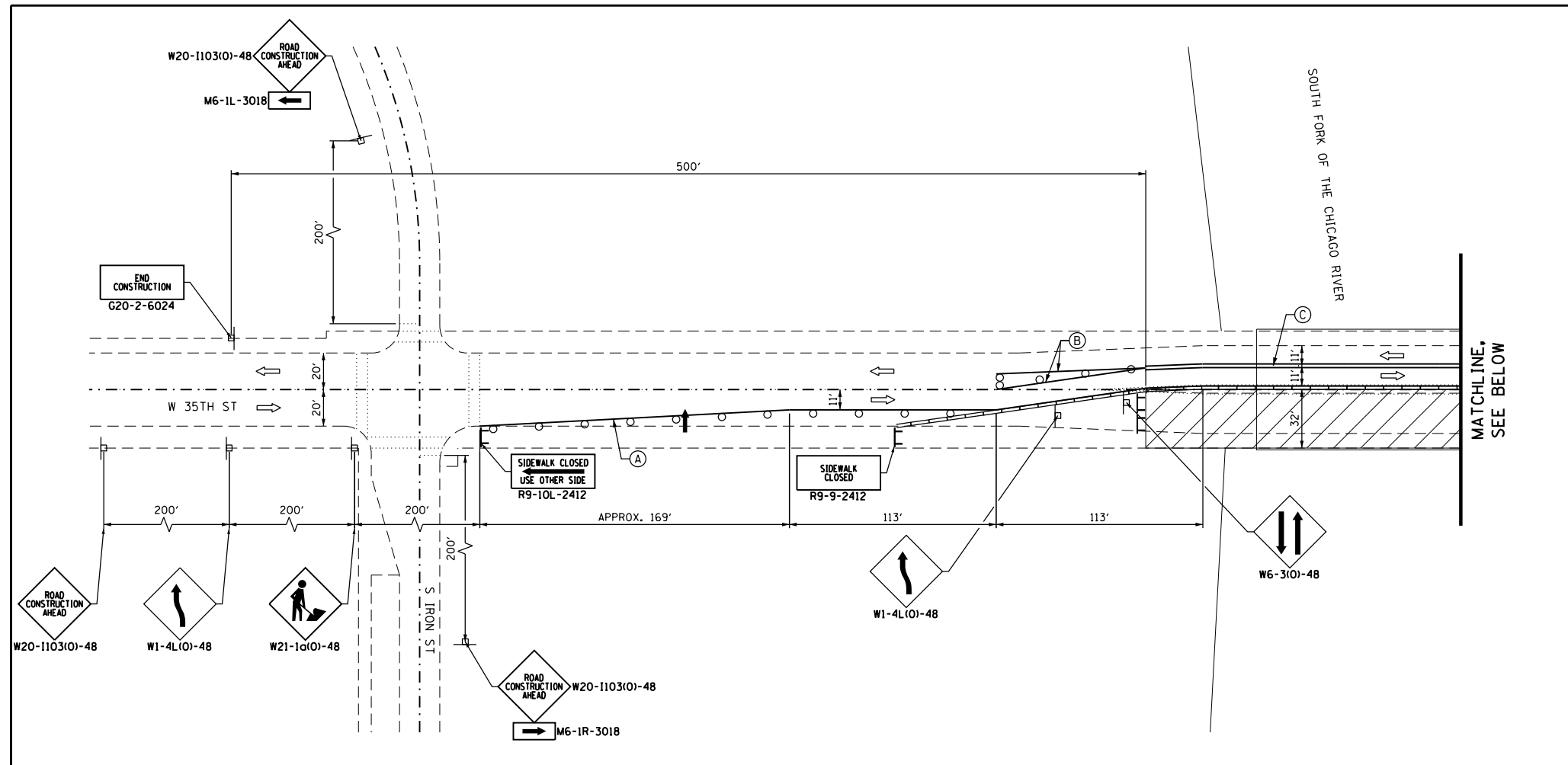
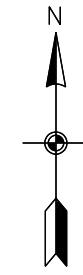
LEGEND

- WORK ZONE
- CONCRETE BARRIER
- EXISTING PAVEMENT MARKING
- PROPOSED PAVEMENT MARKING
- DRUM OR TYPE I BARRICADE W/ STEADY BURN AMBER LIGHT @ 20' C-C
- TYPE III BARRICADE WITH FLASHING LIGHTS
- ARROW BOARD
- TRAFFIC DIRECTION
- TEMPORARY TRAFFIC SIGN
- 4" WHITE LINE
- 4" YELLOW LINE
- 4" DOUBLE YELLOW LINE

NO.	BY	DATE	DESCRIPTION
REVISIONS			
35TH STREET OVER THE SOUTH FORK OF THE CHICAGO RIVER STRUCTURE NO. 016-0692			
MAINTENANCE OF TRAFFIC STAGE 1			
CONSULTANT HNTB			
CITY OF CHICAGO			
DEPARTMENT OF TRANSPORTATION DIVISION OF ENGINEERING			
DRAWN	JAG	SHEET NO.	
CHECKED	TAT	MOT-1 4 OF 16 SHEETS PROJECT NO. E-6-638	
APPROVED	TAT		
DATE	09/29/2017		
SCALE	NOT TO SCALE		
CONTRACT NO.			

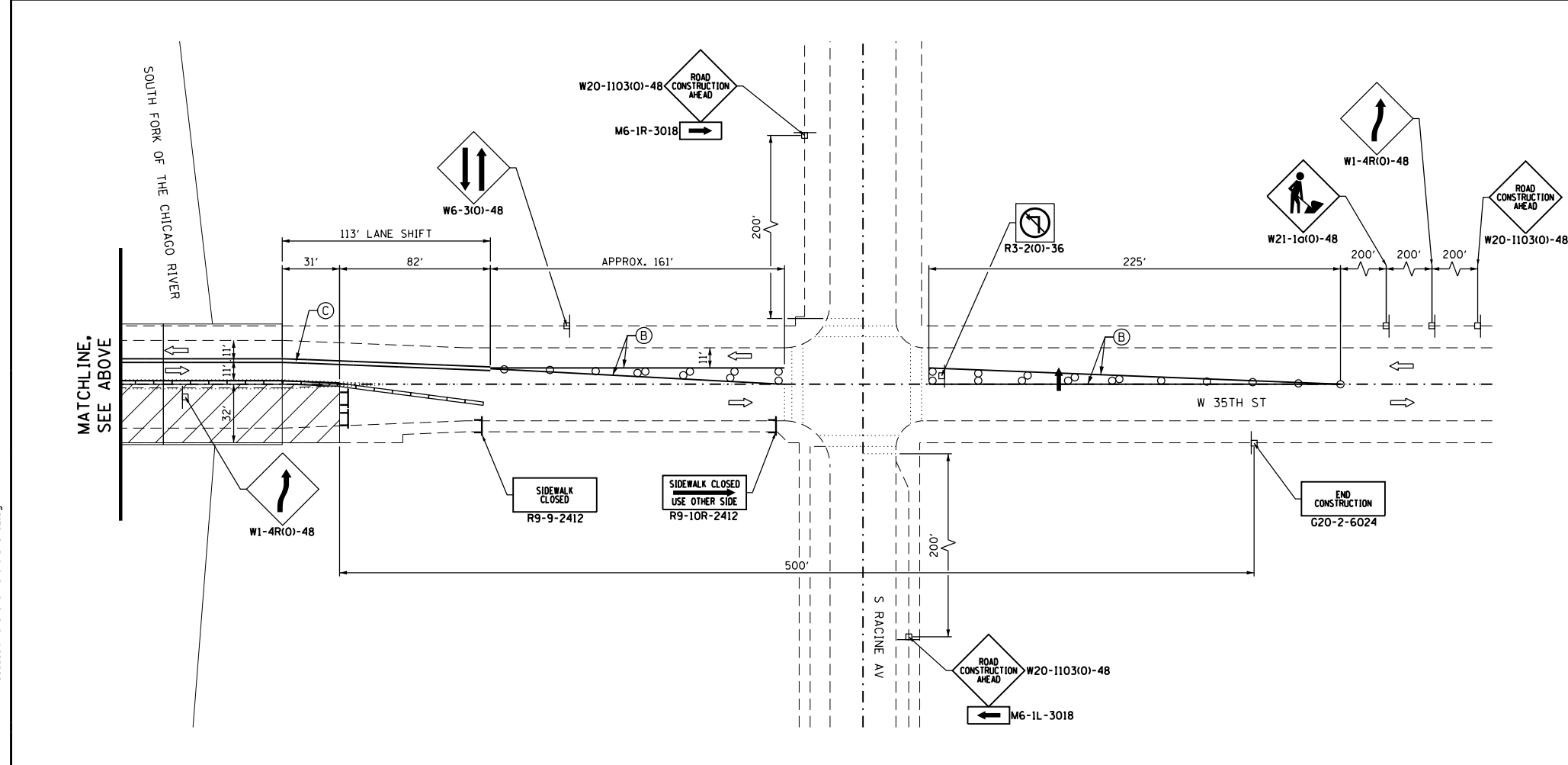
FILE NAME = #FILEL\$

PLOT DATE = 2/9/2018



STAGE 2 NOTES

1. THE CONTRACTOR SHALL MAINTAIN A MINIMUM 11' CLEAR WIDTH OF TRAFFIC LANE FOR TRAFFIC FLOW.
2. THE CONTRACTOR SHALL MAINTAIN TRAFFIC IN ACCORDANCE WITH THE SPECIAL PROVISIONS, STATE STANDARDS, STANDARD SPECIFICATIONS, AND AS DIRECTED BY THE ENGINEER.
3. THE ENGINEER SHALL BE INFORMED 48 HOURS IN ADVANCE OF ANY CHANGE IN CONSTRUCTION STAGING.
4. TYPE I BARRICADES SHALL BE EQUIPPED WITH MONO-DIRECTIONAL STEADY BURN LIGHTS AND SHALL BE PLACED ALONG THE PROPOSED WORK ZONE AND WITHIN TAPER SECTIONS AS INDICATED ON THE PLANS OR AS DIRECTED BY THE ENGINEER.
5. THE CONTRACTOR SHALL REMOVE ALL EXISTING PAVEMENT MARKINGS, COVER SIGNS AND OTHER DEVICES IN CONFLICT WITH THE DESIGNATED TRAFFIC CONTROL PLAN.



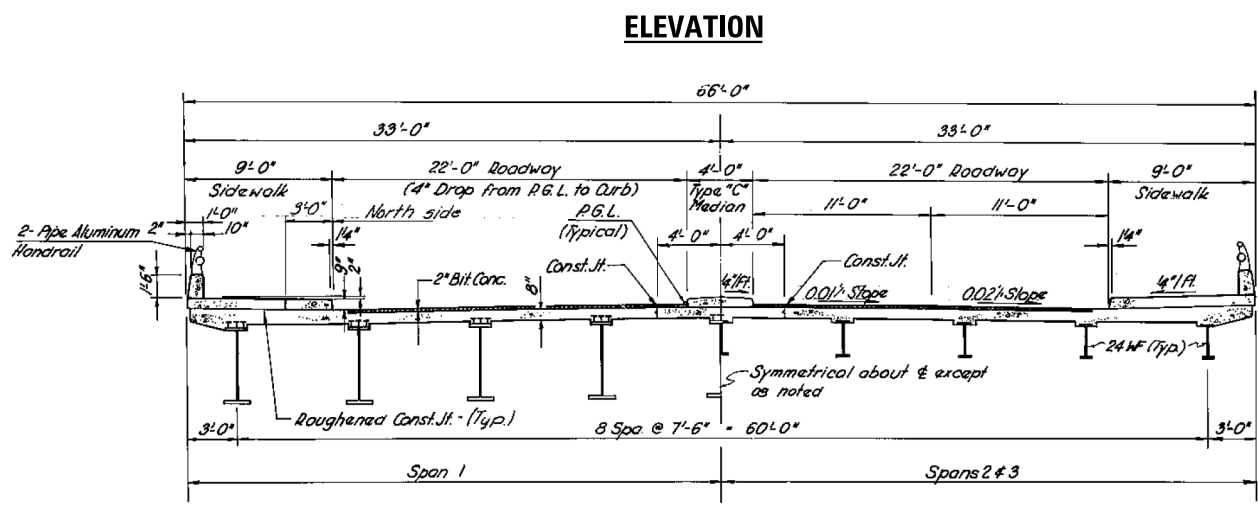
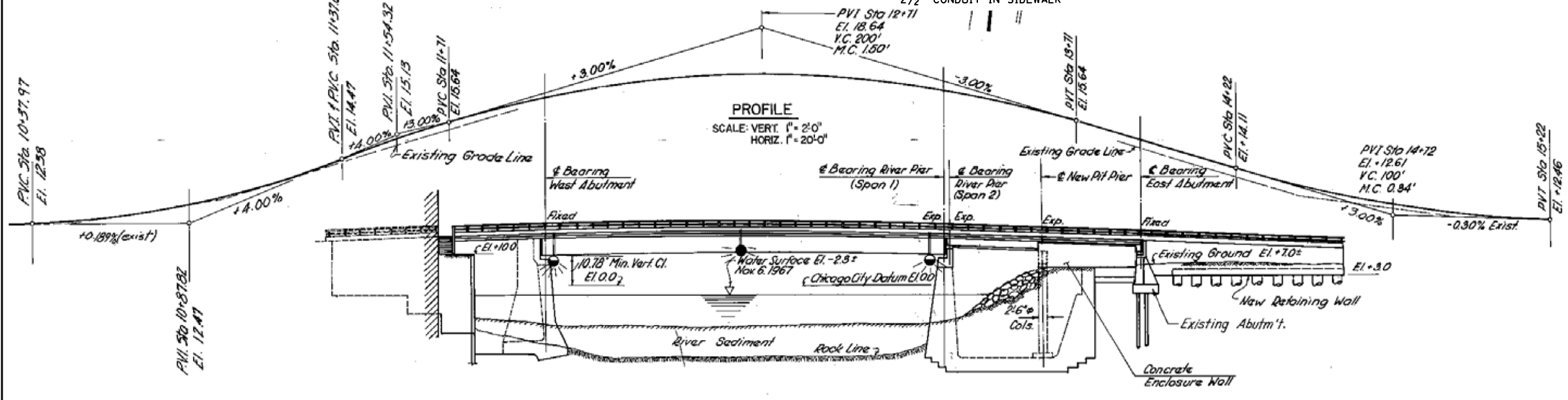
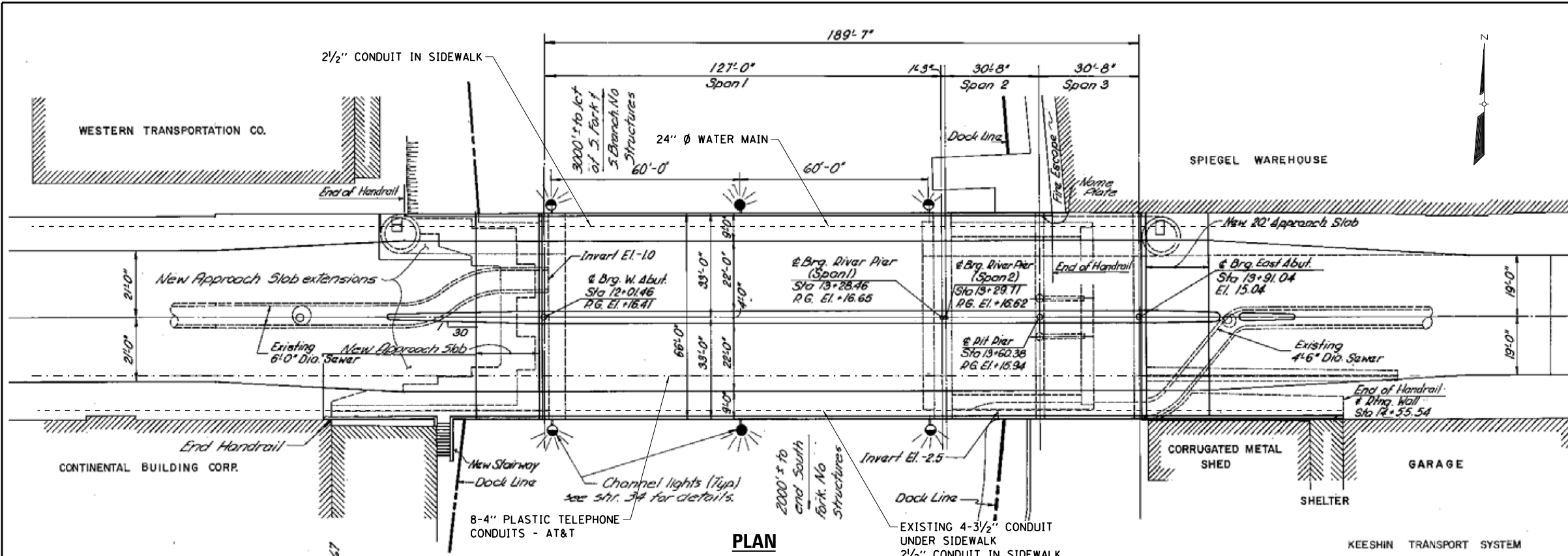
LEGEND

- WORK ZONE
- CONCRETE BARRIER
- EXISTING PAVEMENT MARKING
- PROPOSED PAVEMENT MARKING
- DRUM OR TYPE I BARRICADE W/ STEADY BURN AMBER LIGHT @ 20' C-C
- TYPE III BARRICADE WITH FLASHING LIGHTS
- ARROW BOARD
- TRAFFIC DIRECTION
- TEMPORARY TRAFFIC SIGN
- (A) - 4" WHITE LINE
- (B) - 4" YELLOW LINE
- (C) - 4" DOUBLE YELLOW LINE

NO.	BY	DATE	DESCRIPTION
REVISIONS			
35TH STREET OVER THE SOUTH FORK OF THE CHICAGO RIVER STRUCTURE NO. 016-0692			
MAINTENANCE OF TRAFFIC STAGE 2			
HNTB CONSULTANT			
CITY OF CHICAGO DEPARTMENT OF TRANSPORTATION DIVISION OF ENGINEERING			
DRAWN	JAG	SHEET NO.	
CHECKED	TAT	MOT-2 5 OF 16 SHEETS PROJECT NO. E-6-638	
APPROVED	TAT		
DATE	09/29/2017		
SCALE	NOT TO SCALE		
CONTRACT NO.			

FILE NAME = 49188b_35th-over-SouthForkChcRiv_MOT02.dgn

PLOT DATE = 10/13/2017

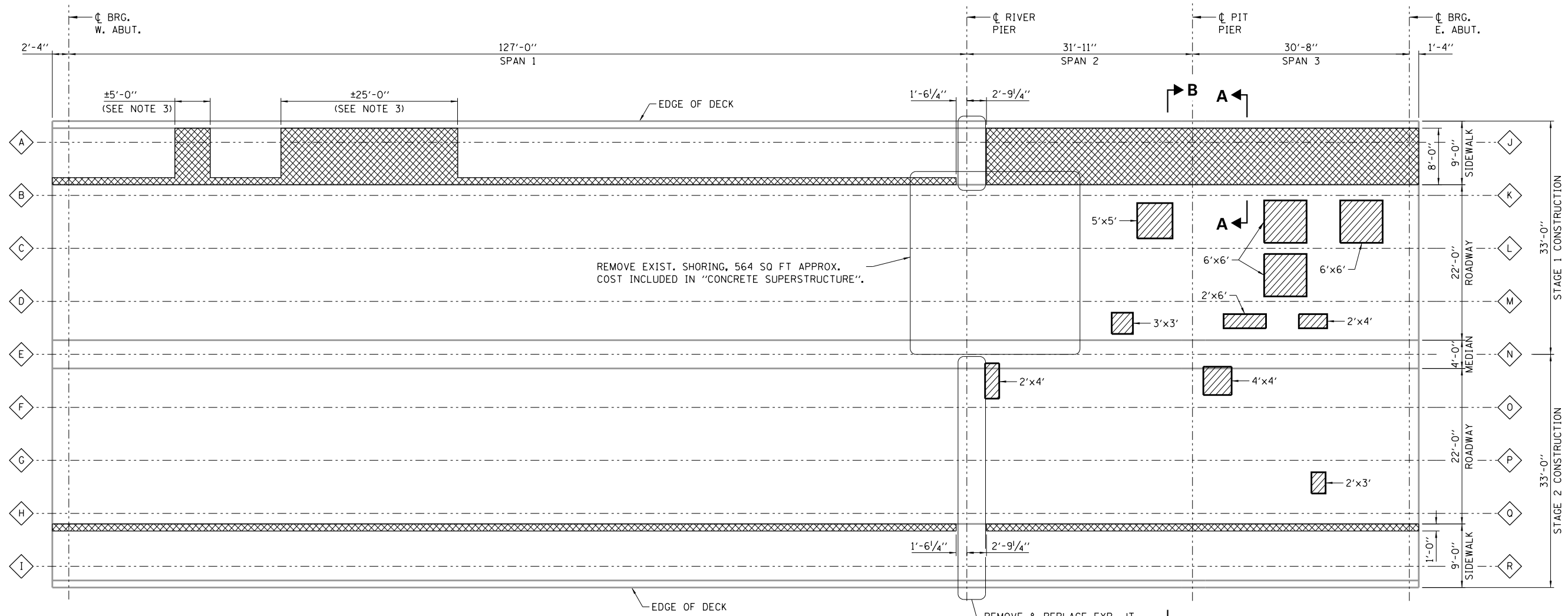


- REFERENCES:**
- 1660920133
- LOADINGS:**
- HS 20-44
- DESIGN SPECIFICATIONS:**
- AASHTO STANDARD SPECIFICATIONS FOR HIGHWAY BRIDGES, 17TH EDITION, 2002
- DESIGN STRESSES:**
- NEW CONSTRUCTION
- F_y = 60,000 PSI (REINFORCEMENT)
- f'c = 4000 PSI
- EXISTING CONSTRUCTION
- F_y = 50,000 PSI
- F_y = 60,000 PSI (REINFORCEMENT)
- f'c = 3500 PSI
- SCOPE OF WORK:**
- CLEAN AND PAINT THE STRINGERS AND BEARINGS A MINIMUM OF FIVE FEET FROM THE RIVER PIER IN SPANS 1 & 2.
 - PERFORM STEEL REPAIRS AS SHOWN IN THE CONTRACT PLANS.
 - PERFORM DECK AND SIDEWALK REPAIRS AS SHOWN IN THE CONTRACT PLANS.
 - REMOVE SOUTH HALF OF EXISTING EXPANSION JOINT AND REPLACE WITH PROPOSED PREFORMED JOINT SEAL.
 - PERFORM STRUCTURAL CONCRETE REPAIRS TO THE RIVER PIER.

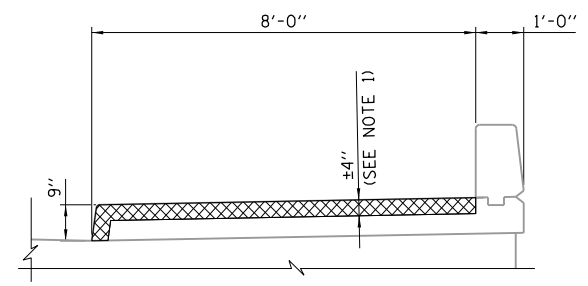
NO.	BY	DATE	DESCRIPTION
REVISIONS			
35TH STREET OVER THE SOUTH FORK OF THE SOUTH BRANCH OF THE CHICAGO RIVER STRUCTURE NUMBER 016-6092			
GENERAL PLAN AND ELEVATION			
CONSULTANT			
HNTB			
CITY OF CHICAGO			
DEPARTMENT OF TRANSPORTATION DIVISION OF ENGINEERING			
DRAWN	JRK/LK	SHEET NO.	
CHECKED	APC	S-1	
APPROVED	TAT		
DATE	09-29-2017		
SCALE	NTS		
CONTRACT NO.	PROJECT NO. E-6-638		6 OF 16 SHEETS

FILE NAME = 49888_35TH_STR_01.dgn

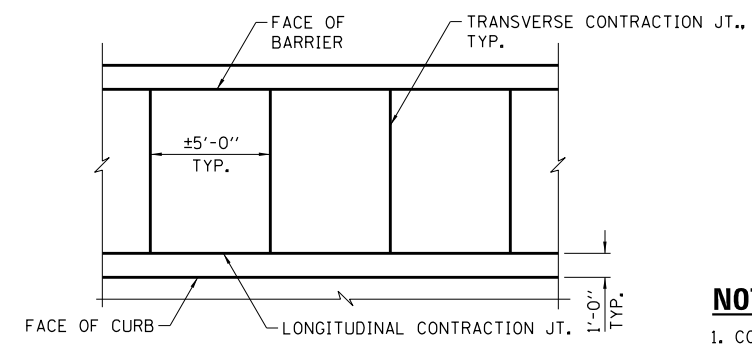
PLOT DATE = 2/8/2018



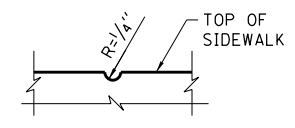
PLAN



SECTION A-A



TYPICAL CONTRACTION JOINT LAYOUT



CONTRACTION JOINT DETAIL

NOTES:

1. CONTRACTOR SHALL REMOVE EXIST. CONCRETE TO EXPOSE 1" UNDER TOP TRANSVERSE EXISTING REINFORCEMENT.
2. NEW CONCRETE ADJACENT TO EXISTING CONCRETE LEFT IN PLACE SHALL BE DELINEATED THROUGH THE USE OF 1/4" CONTRACTION JOINTS.
3. CONCRETE SIDEWALK REPAIRS THAT PARTIALLY EXTEND INTO AN EXISTING SIDEWALK PANEL SHALL BE EXPANDED TO ENCOMPASS THE ENTIRE PANEL WHICH IS DELINEATED BY EXISTING CONTRACTION JOINTS.

DESCRIPTION	UNIT	QUANTITY
* DECK SLAB REPAIR (FULL DEPTH, TYPE II)	SQ YD	22
* HOT-MIX ASPHALT SURFACE REMOVAL (DECK)	SQ YD	22
* BRIDGE SIDEWALK REPAIR (PARTIAL DEPTH)	SQ FT	1015
* HOT-MIX ASPHALT SURFACE COURSE, MIX "D", N70	TON	2.5

* QUANTITIES ARE ESTIMATED. ACTUAL LOCATIONS AND QUANTITIES TO BE DETERMINED BY THE COMMISSIONER. FULL DEPTH DECK REPAIRS ARE LIMITED TO SPANS 2 AND 3 ONLY.

REFERENCES:

- 1660920144
- 1660920145

LEGEND:

- LIMITS OF FULL DEPTH DECK SLAB REPAIR, HOT-MIX SURFACE COURSE, MIX "D", N70, AND ASPHALT SURFACE REMOVAL
- LIMITS OF SIDEWALK REPAIR PARTIAL DEPTH
- STRINGER/GIRDER NUMBER

NO.	BY	DATE	DESCRIPTION
REVISIONS			

35TH STREET OVER THE SOUTH FORK OF THE SOUTH BRANCH OF THE CHICAGO RIVER STRUCTURE NUMBER 016-6092

DECK SLAB REPAIRS

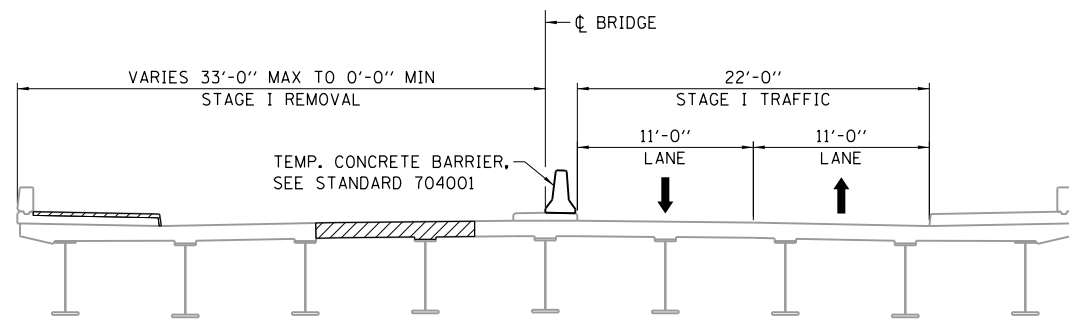
CONSULTANT **HNTB**

CITY OF CHICAGO

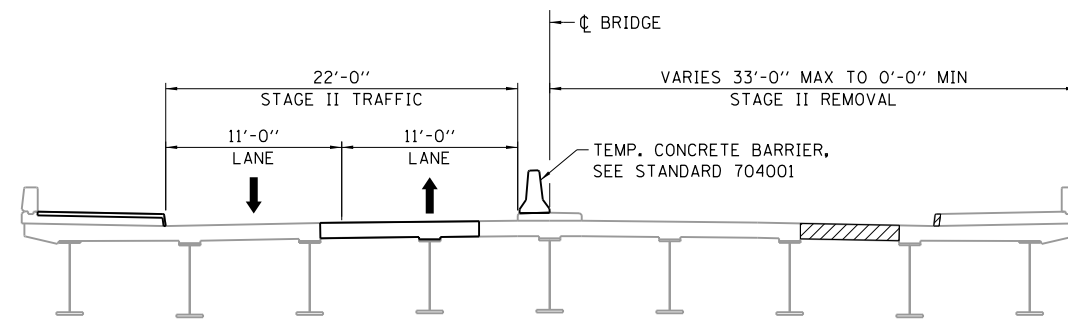
DEPARTMENT OF TRANSPORTATION
DIVISION OF ENGINEERING

DRAWN	JRK/LK	SHEET NO.
CHECKED	APC	S-2 7 OF 16 SHEETS
APPROVED	TAT	
DATE	09-29-2017	
SCALE	NTS	
CONTRACT NO.		PROJECT NO. E-6-638

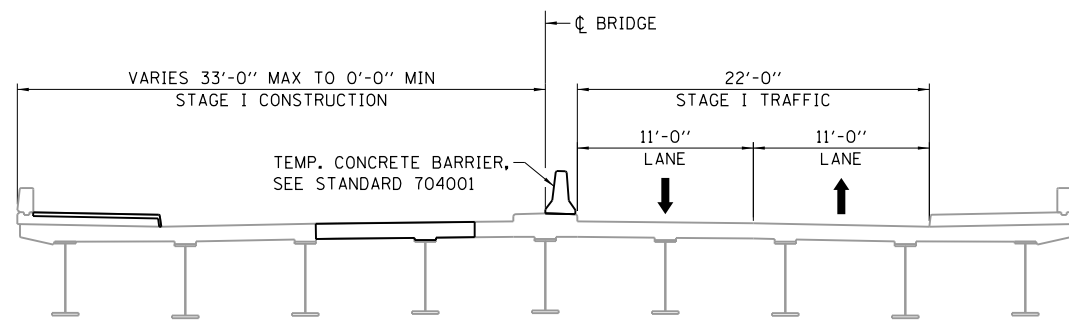
FILE NAME = 49888-35TH_STR_01.dgn



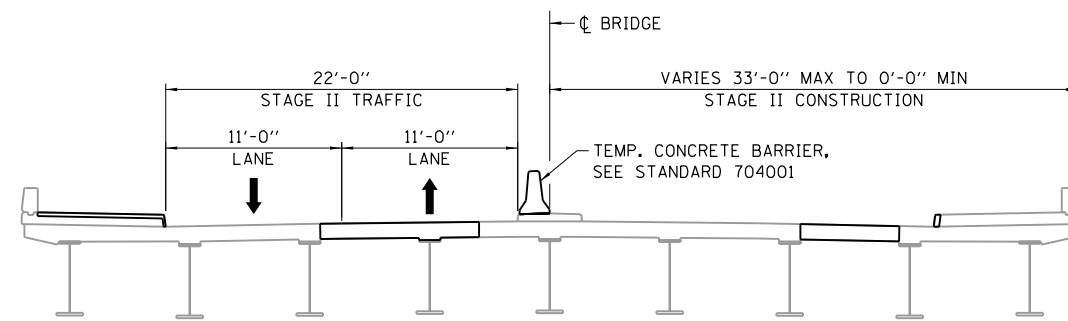
SECTION B-B STAGE I REMOVAL
(LOOKING EAST)



SECTION B-B STAGE II REMOVAL
(LOOKING EAST)



SECTION B-B STAGE I CONSTRUCTION
(LOOKING EAST)



SECTION B-B STAGE II CONSTRUCTION
(LOOKING EAST)

LEGEND

 PARTIAL REMOVAL OF EXISTING STRUCTURE

NOTES:

1. FOR TEMPORARY CONCRETE BARRIER DETAILS, SEE IDOT'S LATEST HIGHWAY STANDARDS.

NO.	BY	DATE	DESCRIPTION

REVISIONS

35TH STREET OVER THE SOUTH FORK OF THE SOUTH BRANCH OF THE CHICAGO RIVER
STRUCTURE NUMBER 016-6092

CONSTRUCTION STAGING

CONSULTANT
HNTB

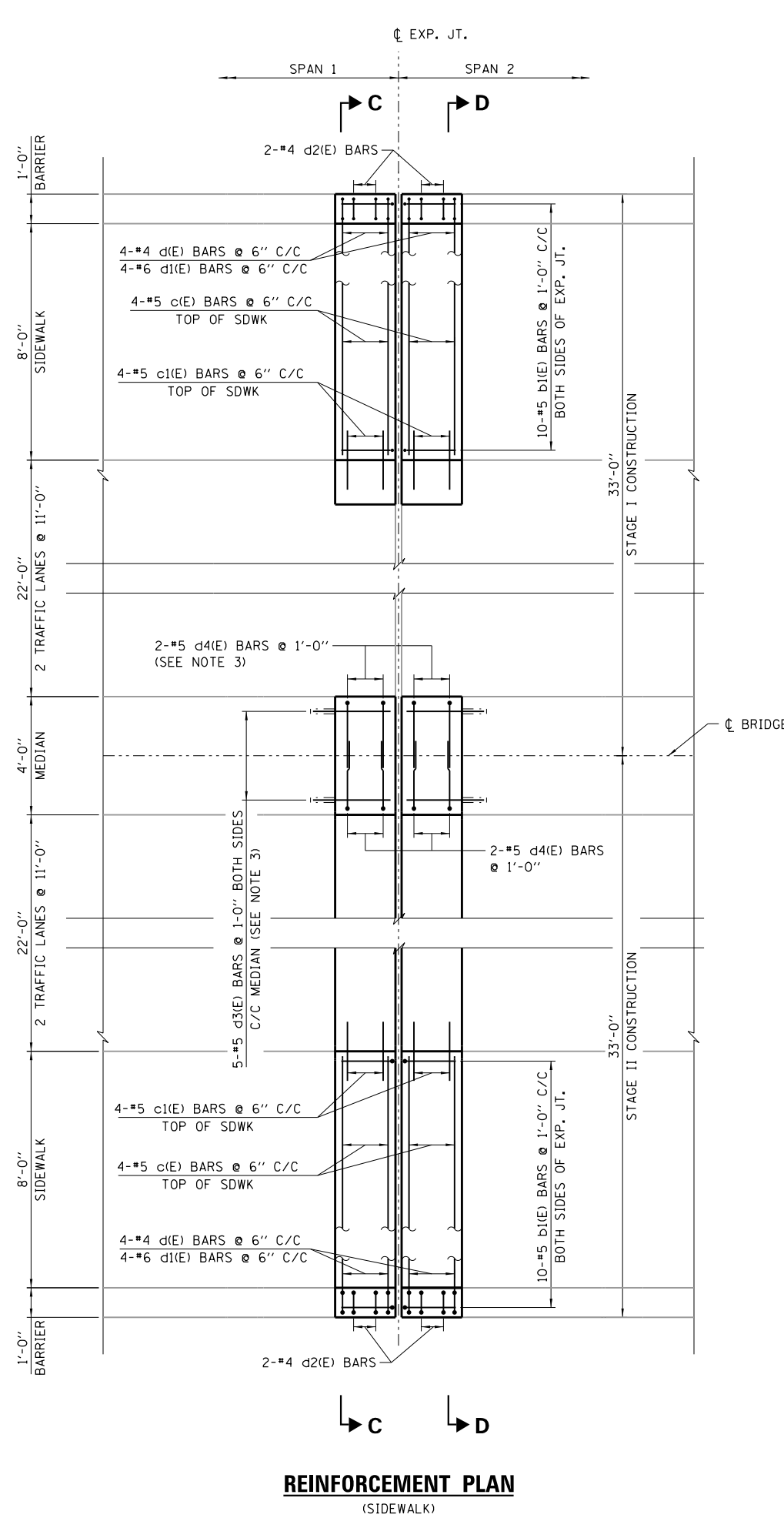
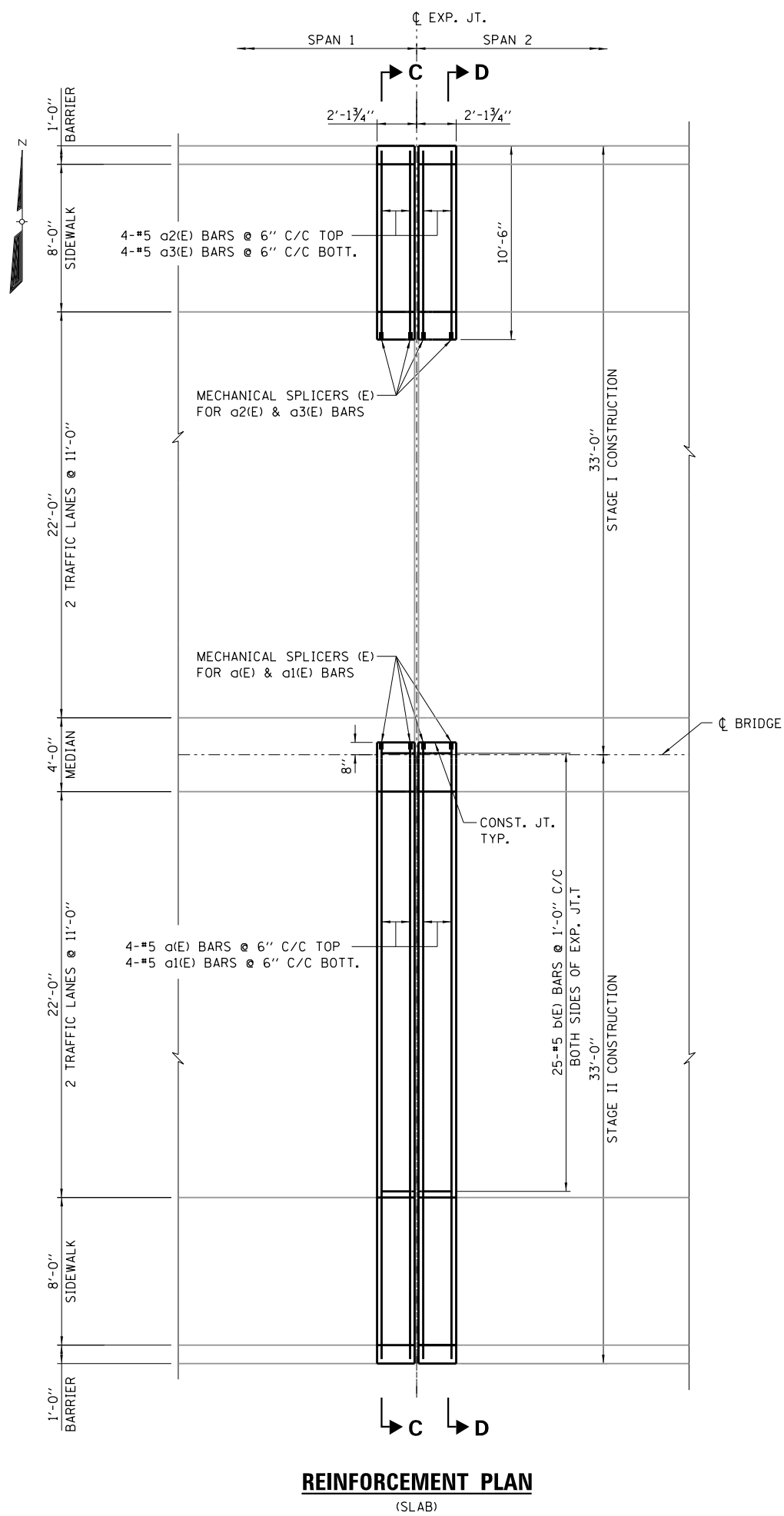
CITY OF CHICAGO

DEPARTMENT OF TRANSPORTATION
DIVISION OF ENGINEERING

DRAWN	JRK/LK	SHEET NO.
CHECKED	APC	S-3
APPROVED	TAT	
DATE	09-29-2017	
SCALE	NTS	
CONTRACT NO.		PROJECT NO. E-6-638

FILE NAME = 49888_35TH_STR_01.dgn

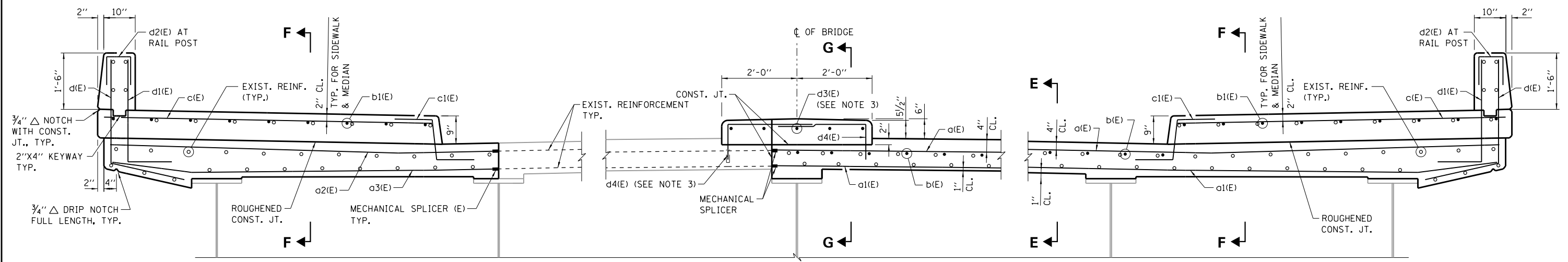
PLOT DATE = 2/8/2018



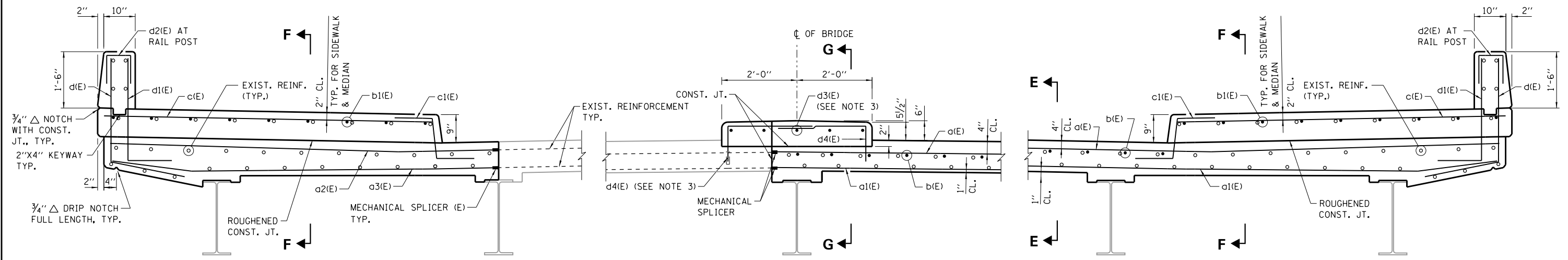
NOTES

1. BEND AND CUT PROPOSED REINFORCEMENT TO FIT IF REQUIRED.
2. FOR SECTIONS C-C AND D-D, SEE SHEET S-5.
3. DRILL AND GROUT ACCORDING TO ARTICLE 584 OF THE STANDARD SPECIFICATIONS WITH A MINIMUM EMBEDMENT OF 6". COST INCLUDED WITH THE PAY ITEM "REINFORCEMENT BARS, EPOXY COATED".
4. ALL FORMS NEED TO BE REMOVED FROM CURRENT AND PREVIOUS WORK AFTER CONSTRUCTION.

NO.	BY	DATE	DESCRIPTION
REVISIONS			
35TH STREET OVER THE SOUTH FORK OF THE SOUTH BRANCH OF THE CHICAGO RIVER STRUCTURE NUMBER 016-6092			
REINFORCEMENT PLAN			
CONSULTANT			
HNTB			
CITY OF CHICAGO			
DEPARTMENT OF TRANSPORTATION DIVISION OF ENGINEERING			
DRAWN	JRK/LK	SHEET NO.	
CHECKED	APC	S-4	
APPROVED	TAT		
DATE	09-29-2017		
SCALE	NTS		
CONTRACT NO.	PROJECT NO. E-6-638		9 OF 16 SHEETS



SECTION C-C



SECTION D-D

NOTES

1. BEND AND CUT PROPOSED REINFORCEMENT TO FIT IF REQUIRED.
2. EXISTING REINFORCEMENT SHALL BE CLEANED AND INCORPORATED INTO THE NEW CONSTRUCTION. COST INCLUDED WITH CONCRETE REMOVAL.
3. DRILL AND GROUT ACCORDING TO ARTICLE 584 OF THE STANDARD SPECIFICATIONS WITH A MINIMUM EMBEDMENT OF 6". COST INCLUDED WITH THE PAY ITEM "REINFORCEMENT BARS, EPOXY COATED".
4. FOR SECTIONS E-E, F-F AND G-G, SEE SHEET S-6.
5. PROPOSED CONSTRUCTION SHALL MATCH EXISTING ELEVATIONS.

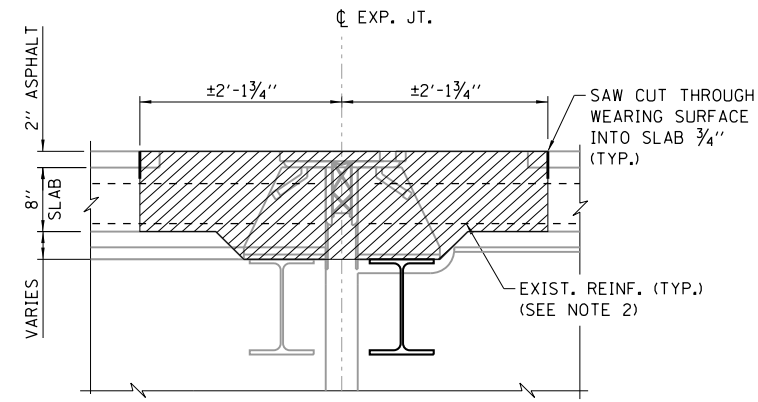
REVISIONS			
NO.	BY	DATE	DESCRIPTION
<p align="center">35TH STREET OVER THE SOUTH FORK OF THE SOUTH BRANCH OF THE CHICAGO RIVER STRUCTURE NUMBER 016-6092</p>			
<p align="center">DECK SECTIONS</p>			
<p>CONSULTANT HNTB</p>			
<p align="center">CITY OF CHICAGO</p>			
<p align="center">DEPARTMENT OF TRANSPORTATION DIVISION OF ENGINEERING</p>			
DRAWN	JRK/LK	SHEET NO.	
CHECKED	APC	<p align="center">S-5</p> <p align="center">10 OF 16 SHEETS</p>	
APPROVED	TAT		
DATE	09-29-2017		
SCALE	NTS		
CONTRACT NO.		PROJECT NO. E-6-638	

FILE NAME = 49808_35TH_STR_01.dgn

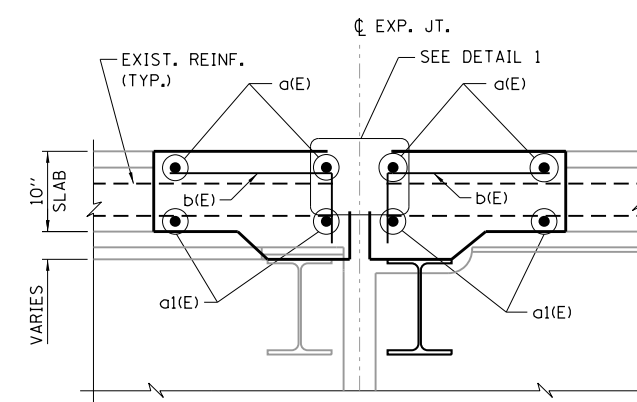
PLOT DATE = 2/8/2018

BILL OF MATERIAL

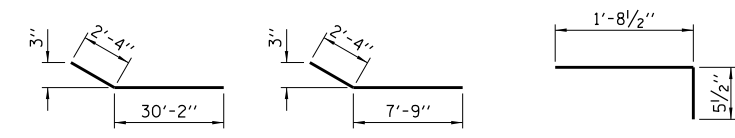
BAR	NO.	SIZE	LENGTH	SHAPE
a(E)	8	#5	33'-2"	—
a1(E)	8	#5	33'-2"	└
a2(E)	8	#5	10'-1"	—
a3(E)	8	#5	10'-1"	└
b(E)	50	#5	2'-2"	└
b1(E)	40	#5	3'-1"	└
c(E)	16	#5	8'-6"	—
c1(E)	16	#5	3'-6"	└
d(E)	16	#4	3'-2"	└
d1(E)	16	#6	3'-6"	└
d2(E)	8	#4	2'-7"	└
d3(E)	10	#5	2'-6"	└
d4(E)	8	#5	3'-6"	└
CONCRETE SUPERSTRUCTURE			CU YD	9.9
REINFORCEMENT BARS, EPOXY COATED			POUND	1360
SAW CUTS			FOOT	91
CONCRETE REMOVAL			CU YD	9.9



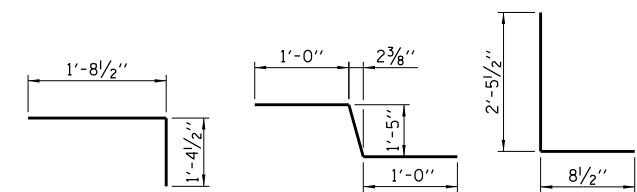
REMOVAL SECTION E-E
(TYP. RDWY SECTION)



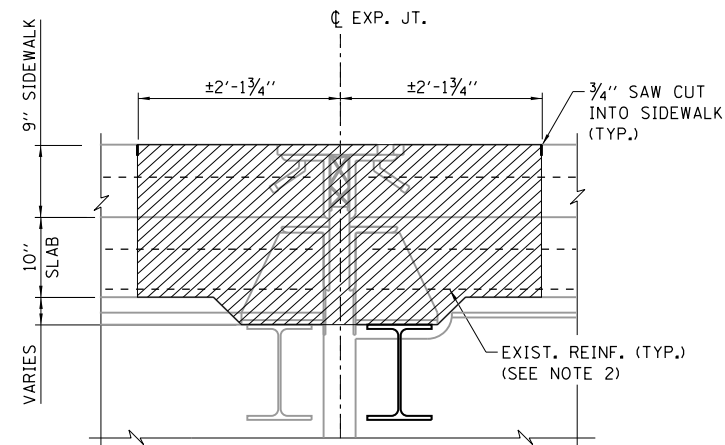
SECTION E-E
(TYP. RDWY SECTION)



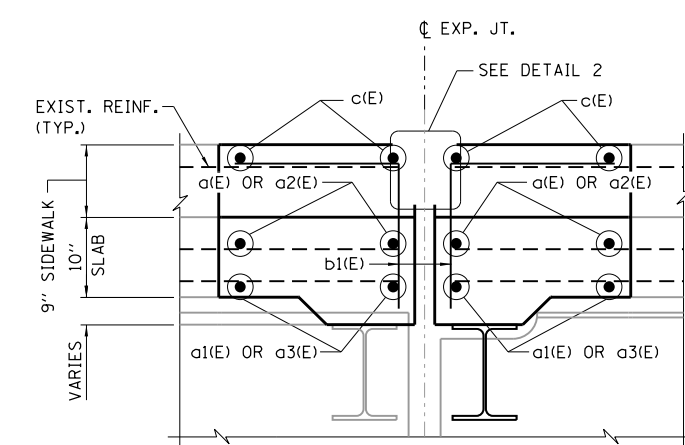
a1(E) BAR a3(E) BAR b(E) BAR



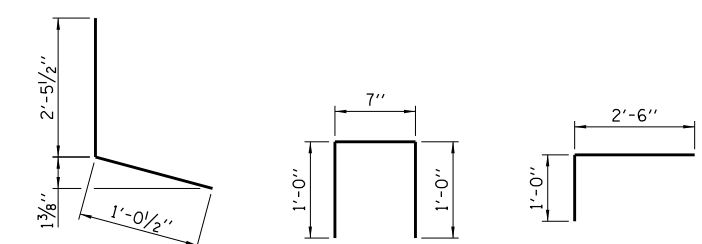
b1(E) BAR c1(E) BAR d(E) BAR



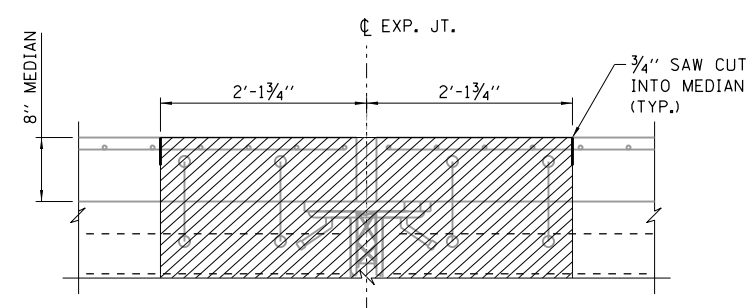
REMOVAL SECTION F-F
(TYP. SDWK SECTION)



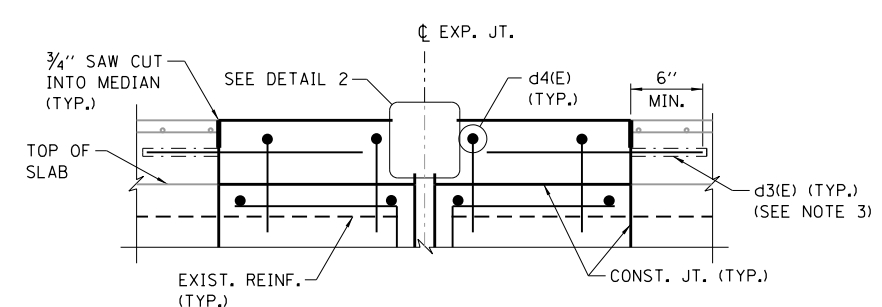
SECTION F-F
(TYP. SDWK SECTION)



d1(E) BAR d2(E) BAR d4(E) BAR



REMOVAL SECTION G-G
(TYP. MEDIAN SECTION)



SECTION G-G
(TYP. MEDIAN SECTION)

NOTES

- BEND AND CUT PROPOSED REINFORCEMENT TO FIT IF REQUIRED.
- EXISTING REINFORCEMENT SHALL BE CLEANED AND INCORPORATED INTO THE NEW CONSTRUCTION. COST INCLUDED WITH CONCRETE REMOVAL.
- DRILL AND GROUT ACCORDING TO ARTICLE 584 OF THE STANDARD SPECIFICATIONS WITH A MINIMUM EMBEDMENT OF 6". COST INCLUDED WITH THE PAY ITEM "REINFORCEMENT BARS, EPOXY COATED".
- FOR EXPANSION JOINT DETAILS 1 & 2, SEE SHEET S-8.
- PROPOSED CONSTRUCTION SHALL MATCH EXISTING ELEVATIONS.

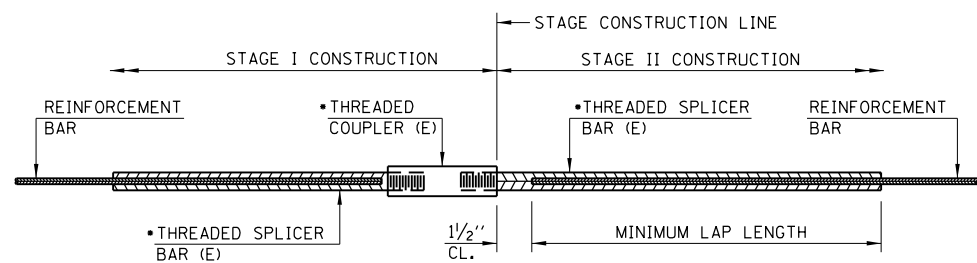
NO.	BY	DATE	DESCRIPTION
REVISIONS			

35TH STREET OVER THE SOUTH FORK OF THE SOUTH BRANCH OF THE CHICAGO RIVER STRUCTURE NUMBER 016-6092

DECK SECTIONS AND DETAILS

CONSULTANT
HNTB
CITY OF CHICAGO
DEPARTMENT OF TRANSPORTATION
DIVISION OF ENGINEERING

DRAWN	JRK/LK	SHEET NO.
CHECKED	APC	S-6
APPROVED	TAT	
DATE	09-29-2017	
SCALE	NTS	
CONTRACT NO.		PROJECT NO. E-6-638

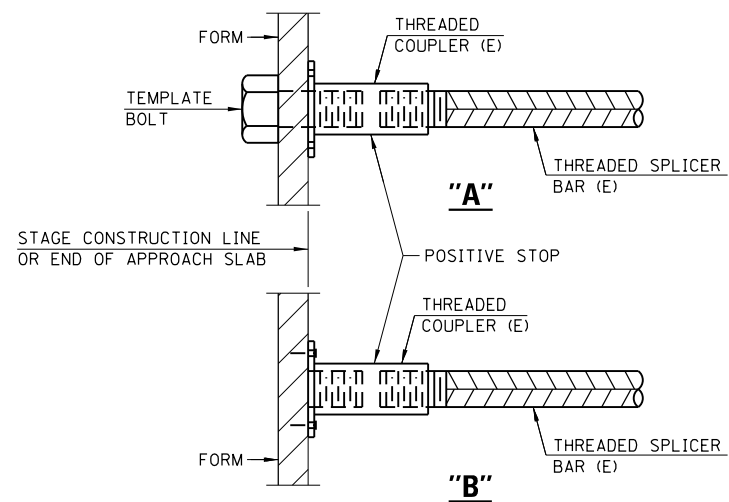


STANDARD BAR SPLICER ASSEMBLY

THREADED SPLICER BAR LENGTH = MIN. LAP LENGTH + 1/2" + THREAD LENGTH

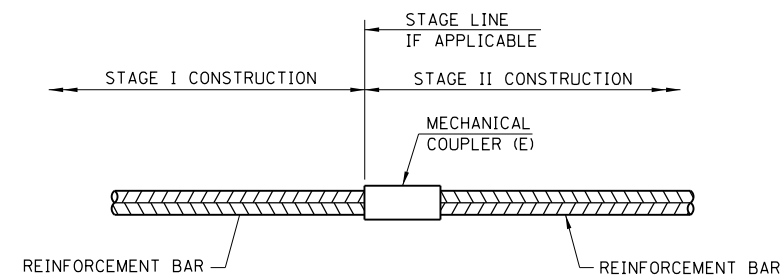
- EPOXY NOT REQUIRED ON BAR SPLICER ASSEMBLY COMPONENTS USED IN CONJUNCTION WITH BLACK BARS.

LOCATION	BAR SIZE	NO. ASSEMBLIES REQUIRED	MINIMUM LAP LENGTH



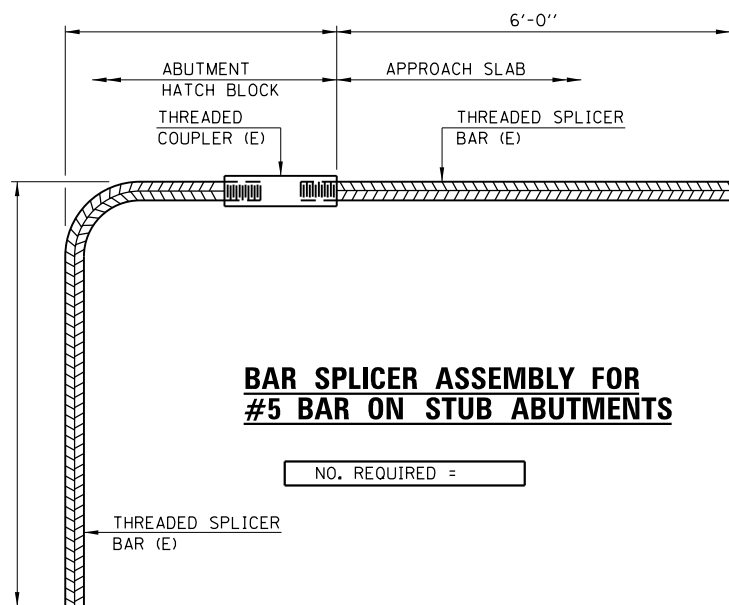
INSTALLATION AND SETTING METHODS

- "A" : SET BAR SPLICER ASSEMBLY BY MEANS OF A TEMPLATE BOLT.
- "B" : SET BAR SPLICER ASSEMBLY BY NAILING TO WOOD FORMS OR CEMENTING TO STEEL FORMS.
- (E) : INDICATES EPOXY COATING.



STANDARD MECHANICAL SPLICER

LOCATION	BAR SIZE	NO. ASSEMBLIES REQUIRED
SLAB	#5	32

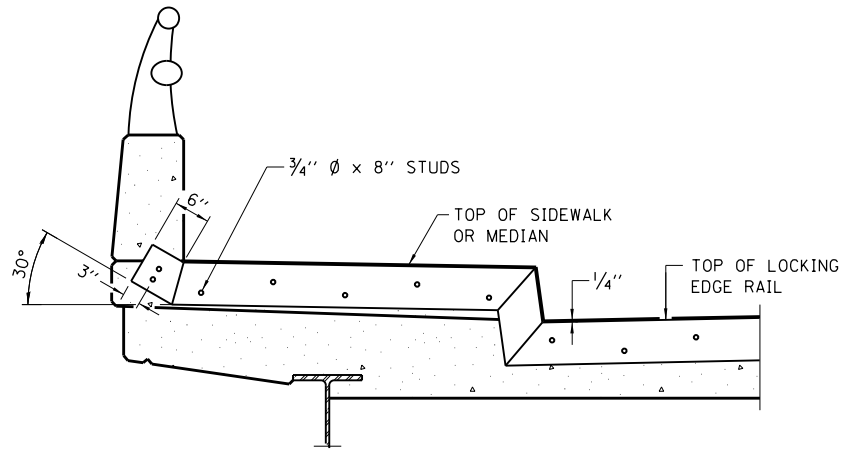
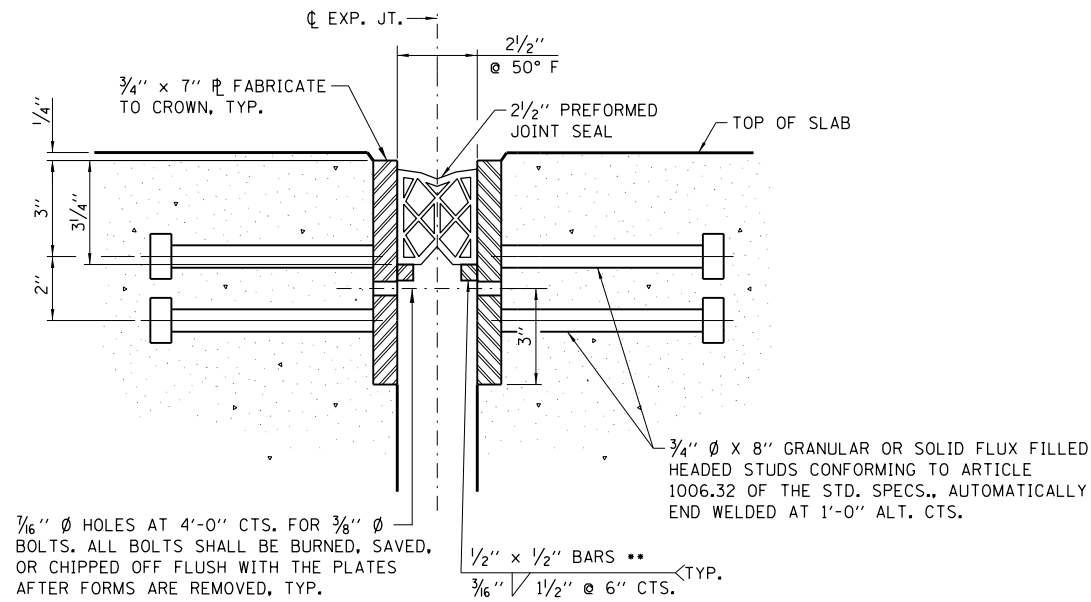


BAR SPLICER ASSEMBLY FOR #5 BAR ON STUB ABUTMENTS

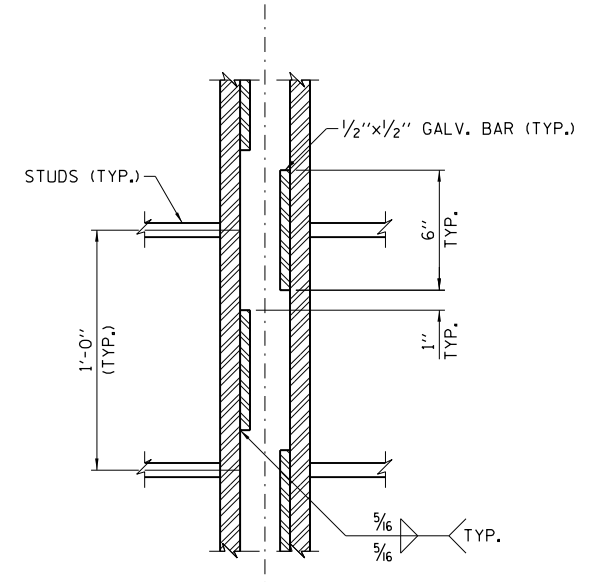
NOTES

- SPLICER BARS SHALL BE DEFORMED WITH THREADED ENDS AND HAVE A MINIMUM 60 KSI YIELD STRENGTH.
- ALL REINFORCEMENT SHALL BE LAPPED AND TIED TO THE SPLICER BARS.
- BAR SPLICER ASSEMBLIES SHALL BE EPOXY COATED ACCORDING TO THE REQUIREMENTS FOR REINFORCEMENT BARS. SEE SECTION 508 OF THE STANDARD SPECIFICATIONS.
- SEE APPROVED LIST OF BAR SPLICER ASSEMBLIES AND MECHANICAL SPLICERS FOR ALTERNATIVES.

NO.	BY	DATE	DESCRIPTION
REVISIONS			
35TH STREET OVER THE SOUTH FORK OF THE SOUTH BRANCH OF THE CHICAGO RIVER STRUCTURE NUMBER 016-6092			
BAR SPLICER ASSEMBLY AND MECHANICAL SPLICER DETAILS			
CONSULTANT HNTB			
CITY OF CHICAGO			
DEPARTMENT OF TRANSPORTATION DIVISION OF ENGINEERING			
DRAWN	JRK/LK	SHEET NO.	
CHECKED	APC	S-7 12 OF 16 SHEETS	
APPROVED	TAT		
DATE	09-29-2017		
SCALE	NTS		
CONTRACT NO.	PROJECT NO. E-6-638		

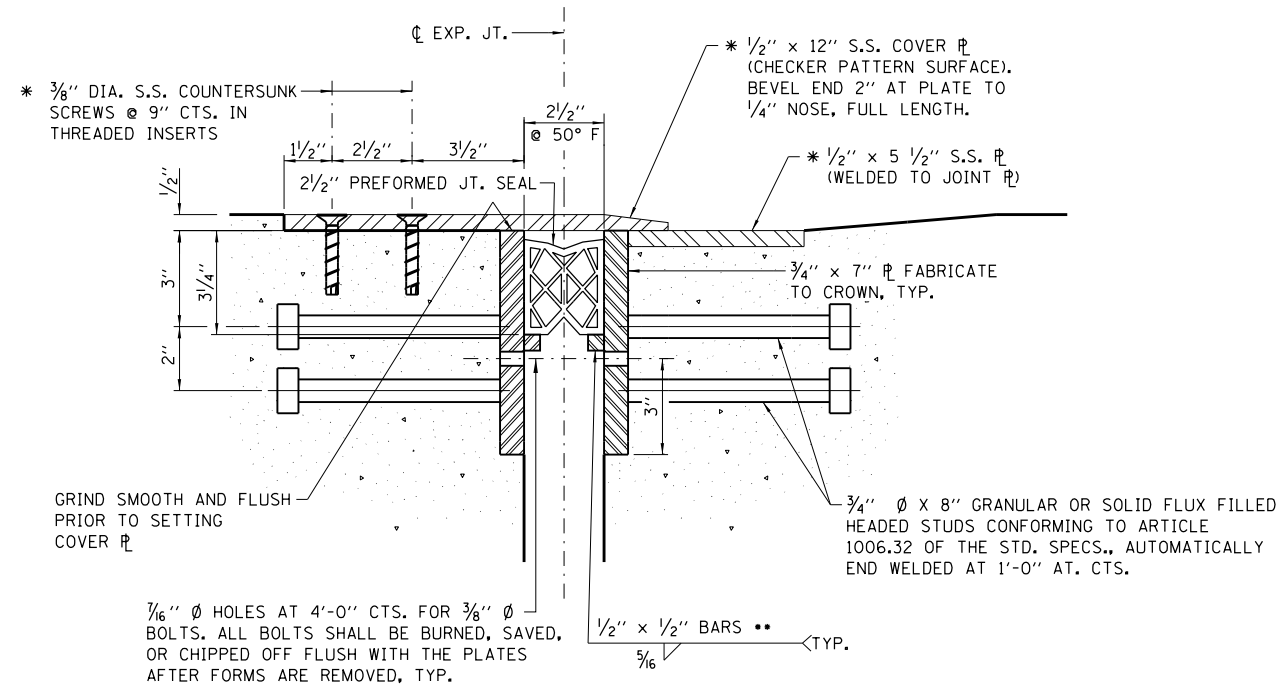


SHORTER PLATES WITH A SINGLE ROW OF STUDS AT 12" CTS. MAY BE NECESSARY ON MEDIANS WHICH ARE SHALLOWER THAN 9". SEE MANUFACTURER'S RECOMMENDATION.



EXPANSION OPENING

TEMPERATURE °F	10	20	30	40	50	60	70	80	90
OPENING	3"	2 7/8"	2 3/4"	2 5/8"	2 1/2"	2 3/8"	2 1/4"	2 1/8"	2"



* COST OF 3/8" Ø STAINLESS STEEL COUNTERSUNK SCREWS, 1/2"x12" STAINLESS STEEL CHECKERED PLATE, AND 1/2"x4 1/2" STAINLESS STEEL PLATE SHALL BE INCLUDED IN THE COST FOR PREFORMED JOINT STRIP SEAL.

* * CUT RETAINER BARS IN SIDEWALK OR MEDIAN 6" SHORT OF THE SIDEWALK OR MEDIAN FACE.

NOTES:

- FURNISH PREFORMED JOINT SEAL STEEL PLATES IN SEGMENTS OF 20 FEET MAXIMUM LENGTH. MAXIMUM SPACE BETWEEN INSTALLED SEGMENTS SHALL BE 3/16". SEAL SPACE WITH SILICONE SEALANT SUITABLE FOR STRUCTURAL STEEL.
- THE MANUFACTURER'S RECOMMENDED INSTALLATION METHODS SHALL BE FOLLOWED.
- ALL STEEL COMPONENTS SHALL BE GALVANIZED AFTER FABRICATION ACCORDING TO ARTICLE 520.03 OF THE STANDARD SPECIFICATIONS.

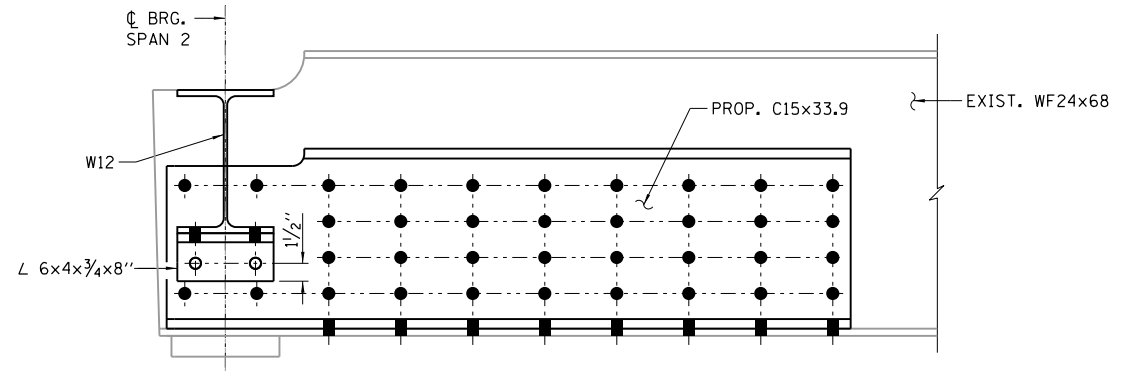
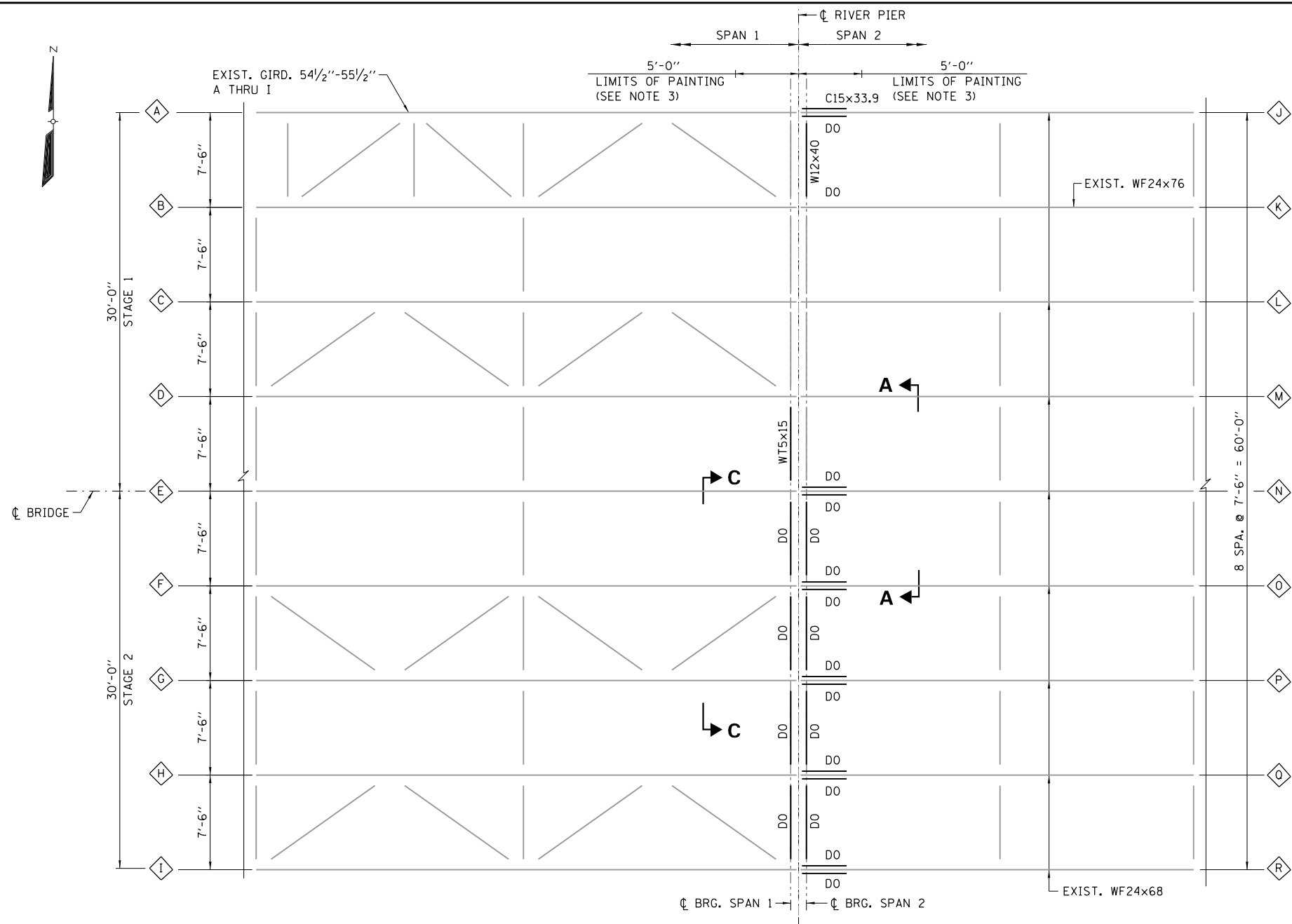
BILL OF MATERIAL

ITEM	UNIT	TOTAL
PREFORMED JOINT SEAL 2 1/2"	FOOT	46

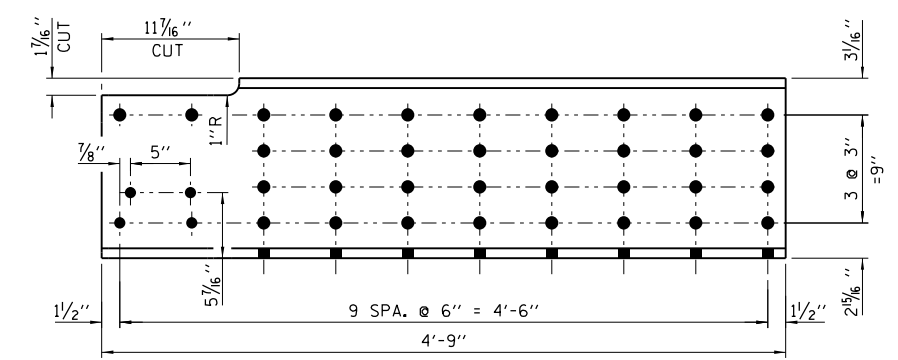
FILE NAME = 49888-35TH-STR-01.dgn

PLOT DATE = 2/8/2018

NO.	BY	DATE	DESCRIPTION
REVISIONS			
35TH STREET OVER THE SOUTH FORK OF THE SOUTH BRANCH OF THE CHICAGO RIVER STRUCTURE NUMBER 016-6092			
EXPANSION JOINT DETAILS			
CONSULTANT			HNTB
CITY OF CHICAGO			
DEPARTMENT OF TRANSPORTATION DIVISION OF ENGINEERING			
DRAWN	JRK/LK	SHEET NO.	
CHECKED	APC	S-8	
APPROVED	TAT		
DATE	09-29-2017		
SCALE	NTS		
CONTRACT NO.	PROJECT NO. E-6-638		13 OF 16 SHEETS



SECTION B-B
(TYPICAL FOR STRINGER J THRU R)



C15x33.9 DETAIL

NOTES:

1. FOR SECTION C-C, SEE SHEET S-10.
2. BAYS ARE NUMBERED FROM NORTH TO SOUTH.
3. CLEAN AND PAINT STRINGERS/GIRDERS, END DIAPHRAGMS, AND BEARINGS A MINIMUM OF 5' FROM THE RIVER PIER. THE STEEL SHALL BE CLEANED ACCORDING TO A SSPC-SP10 SURFACE PREPARATION AND PAINTED WITH AN IDOT PAINT SYSTEM 1.
4. EXISTING STEEL IS ASTM 588 "WEATHERING STEEL".

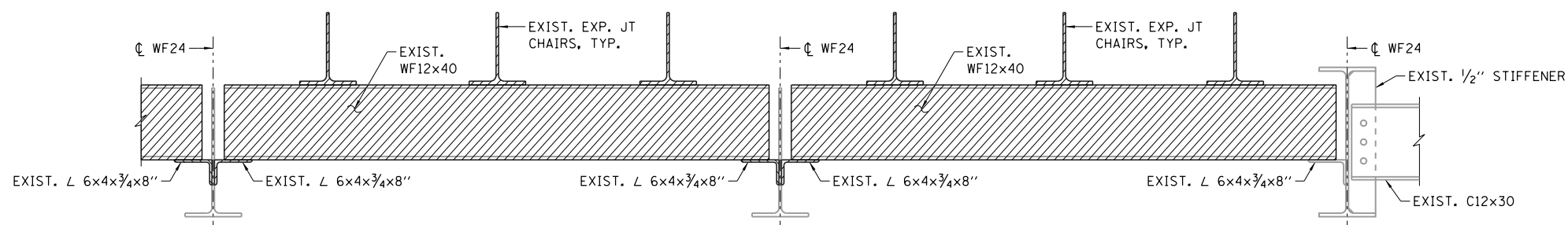
REFERENCES:

- 1660920265
- 1660920268
- 1660920269
- 1660920275
- 1660920276
- 1660920277

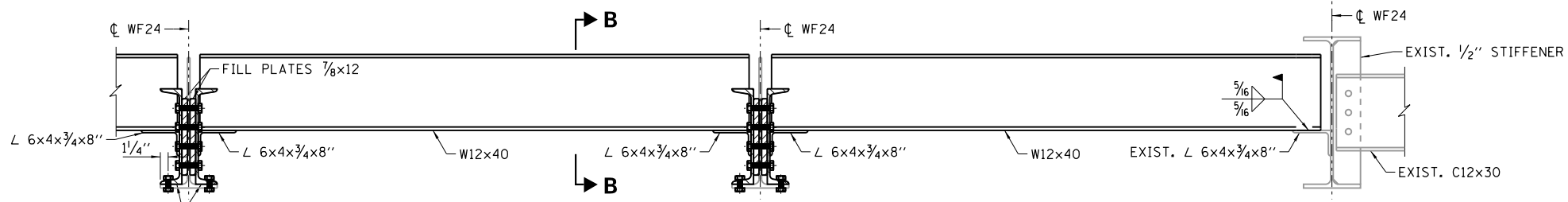
LEGEND:

- ◊ STRINGER/GIRDER NO.
- ▨ STEEL REMOVAL
- 7/8" H.S. BOLT FIELD DRILLED INTO EXISTING MEMBER
- EXISTING 7/8" H.S. BOLT REPLACED W/ PROP. 7/8" H.S. BOLT

PARTIAL FRAMING PLAN



REMOVAL SECTION A-A

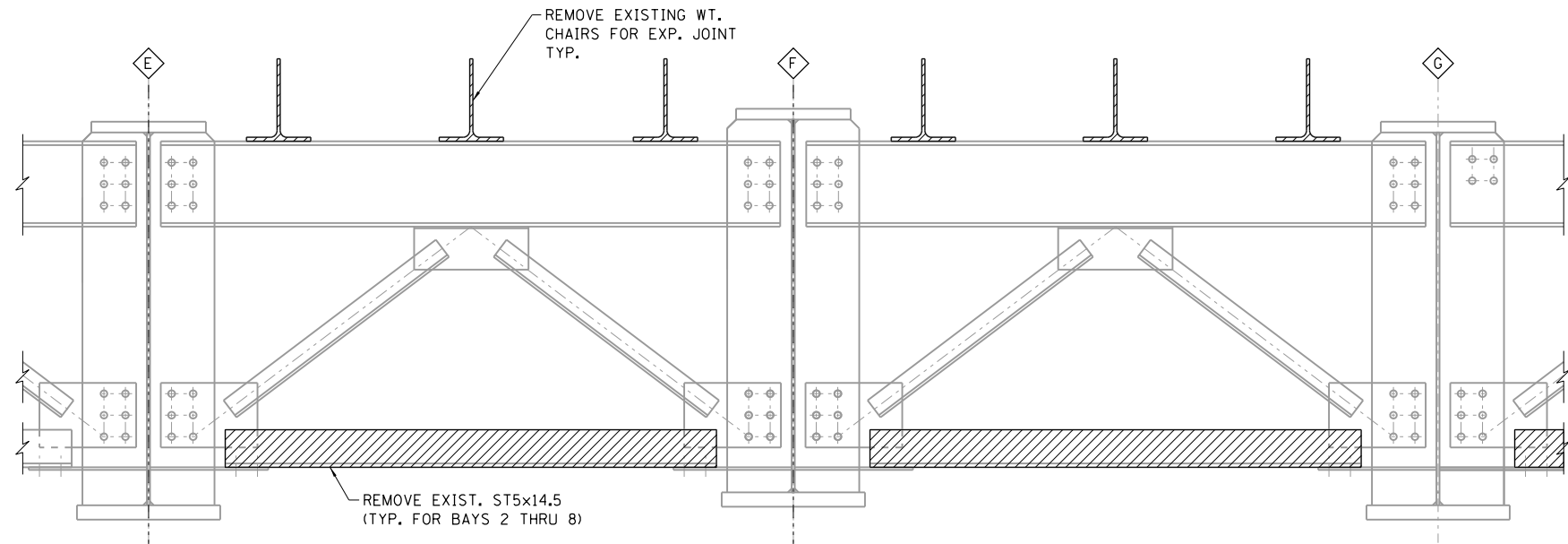


SECTION A-A

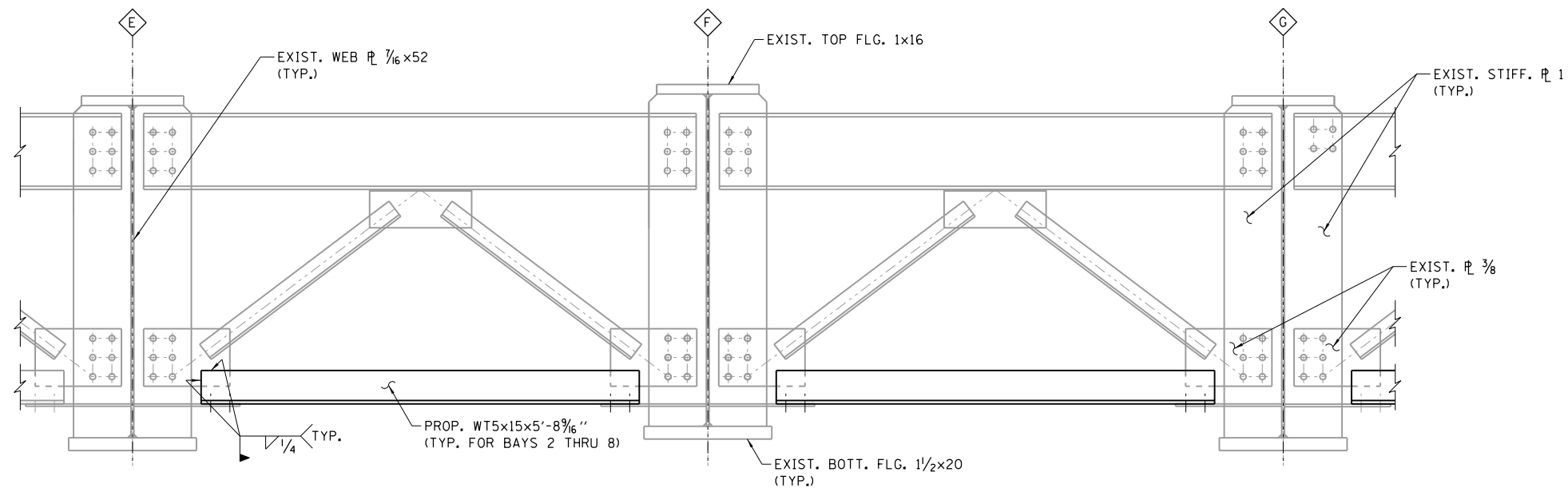
NO.	BY	DATE	DESCRIPTION
REVISIONS			
35TH STREET OVER THE SOUTH FORK OF THE SOUTH BRANCH OF THE CHICAGO RIVER STRUCTURE NUMBER 016-6092			
PARTIAL FRAMING PLAN AND STRINGER REPAIR DETAILS			
CONSULTANT HNTB			
CITY OF CHICAGO			
DEPARTMENT OF TRANSPORTATION DIVISION OF ENGINEERING			
DRAWN	JRK/LK	SHEET NO.	
CHECKED	APC	S-9	
APPROVED	TAT	14 OF 16 SHEETS	
DATE	09-29-2017	PROJECT NO. E-6-638	
SCALE	NTS		
CONTRACT NO.			

FILE NAME = 49888-35TH_STR_01.dgn

PLOT DATE = 2/8/2018



REMOVAL SECTION C-C



SECTION C-C
(TYP. REPAIR DETAIL)

REFERENCES:

- 1660920265
- 1660920268
- 1660920269
- 1660920275
- 1660920276
- 1660920277

LEGEND:

STEEL REMOVAL

NOTES:

1. CONTRACTOR SHALL REMOVE AND GRIND SMOOTH ALL EXISTING WELDS ASSOCIATED W/ EXISTING STRUCTURAL MEMBERS TO BE REMOVED. REMOVAL OF WELDS SHALL BE INCLUDED IN THE COST OF STRUCTURAL STEEL REMOVAL.
2. EXISTING STEEL IS ASTM A 588 "WEATHERING STEEL".
3. USE ELECTRODE E70XX.
4. BAYS ARE NUMBERED FROM NORTH TO SOUTH.

NO.	BY	DATE	DESCRIPTION

REVISIONS

35TH STREET OVER THE SOUTH FORK
OF THE SOUTH BRANCH
OF THE CHICAGO RIVER
STRUCTURE NUMBER 016-6092

STEEL GIRDER REPAIR
DETAILS

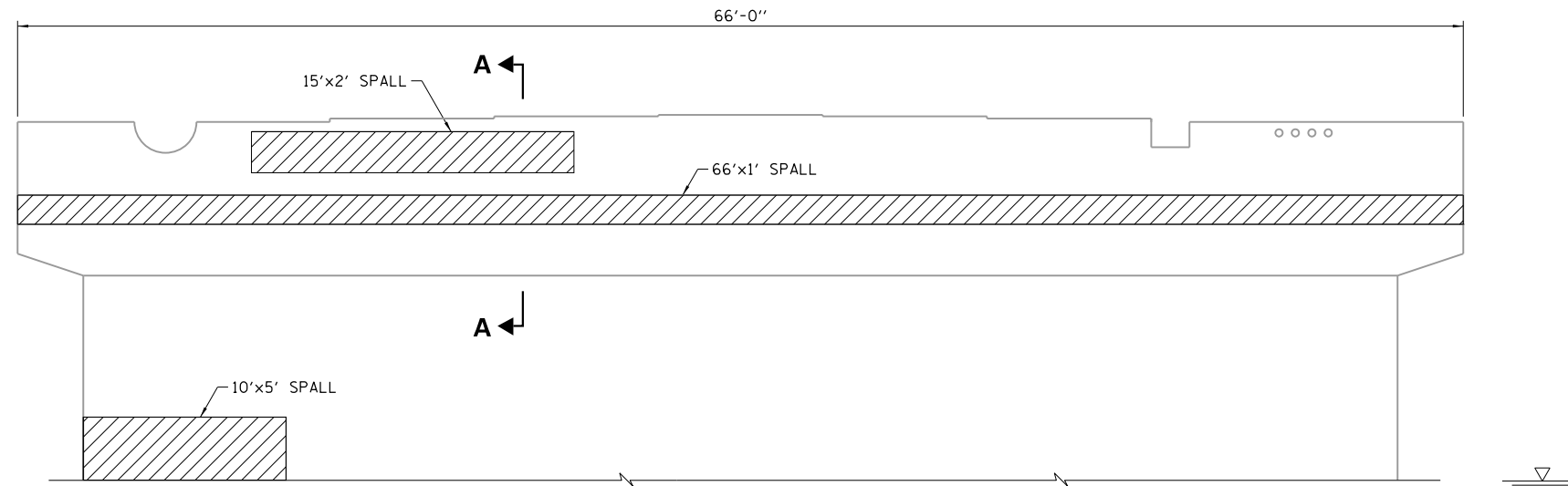
CONSULTANT



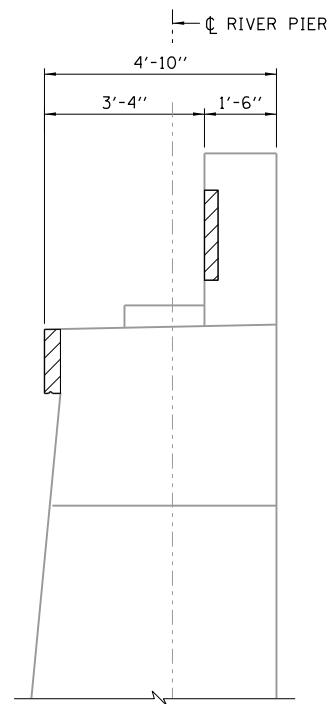
CITY OF CHICAGO

DEPARTMENT OF TRANSPORTATION
DIVISION OF ENGINEERING

DRAWN	JRK/LK	SHEET NO.
CHECKED	APC	S-10
APPROVED	TAT	
DATE	09-29-2017	15 OF 16 SHEETS
SCALE	NTS	
CONTRACT NO.		PROJECT NO. E-6-638




RIVER PIER ELEVATION
(LOOKING EAST)



SECTION A-A

LEGEND:

 LIMITS OF STRUCTURAL CONCRETE REPAIRS
(DEPTH EQUAL TO OR LESS THAN 5 IN)

NOTES:

- CONTRACTOR TO CLEAN BRIDGE SEAT ON THE RIVER PIER. COST FOR CLEANING BRIDGE SEAT SHALL BE INCLUDED IN THE PAY ITEM "CLEANING BRIDGE SEATS".

DESCRIPTION	UNIT	QUANTITY
* STRUCTURAL REPAIR OF CONCRETE (DEPTH EQUAL TO OR LESS THAN 5 IN)	SQ FT	146
CLEANING BRIDGE SEATS	SQ FT	220

* QUANTITIES ARE ESTIMATED. ACTUAL LOCATIONS AND QUANTITIES TO BE DETERMINED BY THE COMMISSIONER IN THE FIELD. STRUCTURAL REPAIR OF CONCRETE SHALL BE LIMITED TO THE RIVER PIER ONLY.

NO.	BY	DATE	DESCRIPTION

REVISIONS

35TH STREET OVER THE SOUTH FORK OF THE SOUTH BRANCH OF THE CHICAGO RIVER
STRUCTURE NUMBER 016-6092

RIVER PIER REPAIRS

CONSULTANT
HNTB

CITY OF CHICAGO

DEPARTMENT OF TRANSPORTATION
DIVISION OF ENGINEERING

DRAWN	JRK/LK	SHEET NO.
CHECKED	APC	S-11
APPROVED	TAT	
DATE	09-29-2017	
SCALE	NTS	
CONTRACT NO.		16 OF 16 SHEETS
		PROJECT NO. E-6-638

FILE NAME = 49808-35TH_STR_01.dgn

PLOT DATE = 2/8/2018