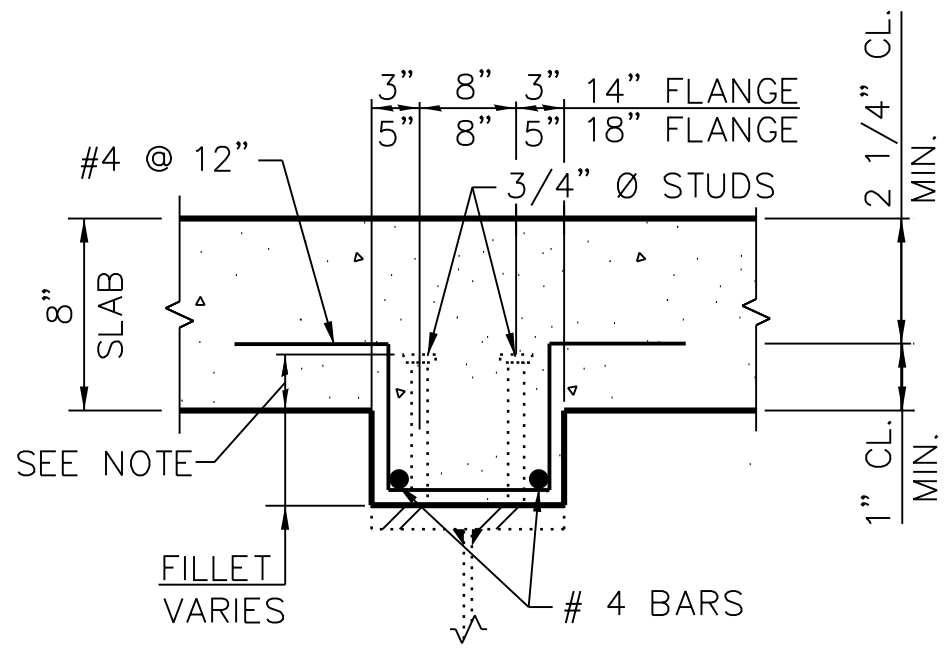
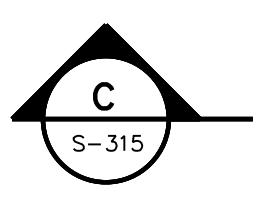
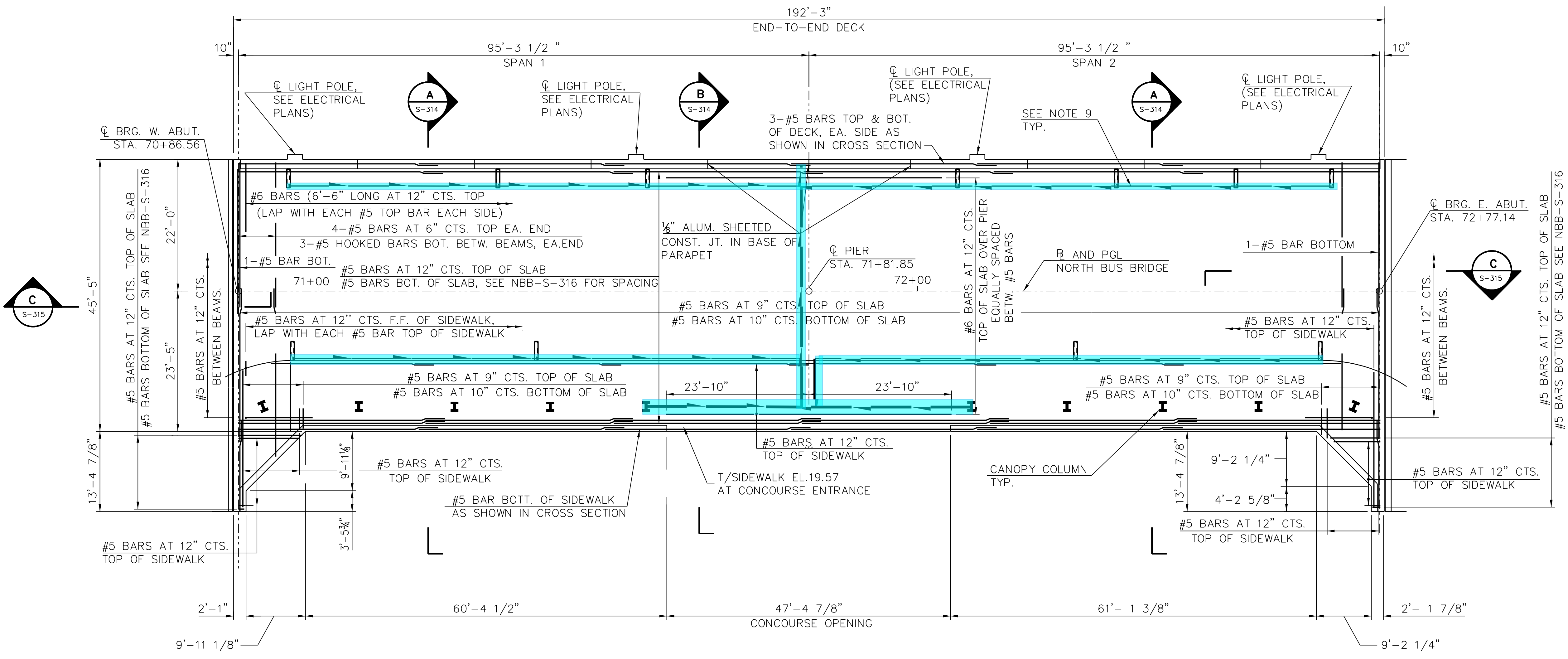


vscorppa



SECTION SHOWING EXISTING FILLET

NOTE:
ADD REINFORCEMENT SHOWN AT EXISTING GIRDERS WHERE CONTRACTOR HAS DETERMINED IN THE FIELD THAT THE EXISTING SHEAR STUD DOES NOT PROTRUDE INTO PROPOSED DECK A MINIMUM 2"

1 DECK PLAN



- NOTES:
- FOR SECTIONS A & B, SEE SHEET NBB-S-314. FOR SECTION C, SEE NBB-S-315
 - FOR APPROACH SLAB DETAILS, SEE SHEETS NBB-S-317 THRU NBB-S-320.
 - FOR EXPANSION JOINT BETWEEN DECK AND CONCOURSE, SEE ARCHITECTURAL DRAWINGS.
 - FOR DECK DETAILS AT CANOPY COLUMNS SEE SHEET SBB-S-212.
 - TOP AND BOTTOM LONGITUDINAL BARS SHALL NOT BE LAPPED AT THE SAME LOCATIONS IN THE DECK, NOR SHALL THE TOP AND BOTTOM TRANSVERSE BARS BE LAPPED AT THE SAME LOCATION.
 - FOR PARAPET ELEVATIONS AND DETAILS, SEE SHEET NBB-S-315.
 - OR SECTIONS THRU PARAPETS, PARTIAL DETAIL AT LIGHT POLE, BAR DIAGRAMS AND MINIMUM BAR LAPS, SEE SHEET NBB-S-316.
 - FOR DRAINAGE SCUPPER AND CLOSED DRAINAGE SYSTEM DETAILS, SEE NBB-S-316A AND NBB-S-316B.
 - FOR REINFORCEMENT AT CANOPY COLUMNS, SEE 95TH-S-117.



SENSITIVE SECURITY INFORMATION
WARNING: THIS RECORD CONTAINS SENSITIVE SECURITY INFORMATION THAT IS CONTROLLED UNDER 49 CFR PARTS 15 AND 1520. NO PART OF THIS RECORD MAY BE DISCLOSED TO PERSONS WITHOUT A "NEED TO KNOW" AS DEFINED IN 49 CFR PARTS 15 AND 1520, EXCEPT WITH THE WRITTEN PERMISSION OF THE ADMINISTRATOR OF THE TRANSPORTATION SECURITY ADMINISTRATION OR THE SECRETARY OF TRANSPORTATION. UNAUTHORIZED RELEASE MAY RESULT IN CIVIL PENALTY OR OTHER ACTION. FOR U.S. GOVERNMENT AGENCIES, PUBLIC DISCLOSURE IS GOVERNED BY 5 U.S.C. 552 AND 49 CFR PARTS 15 AND 1520.

DRAWING SCALE IS NOT GUARANTEED. CTA ASSUMES NO RISK OF LIABILITY FOR ERRORS CAUSED, DIRECTLY OR INDIRECTLY, BY SCALING OF THIS DRAWING.

95th Terminal Improvement
14 West 95th Street (North Terminal)
Chicago, IL 60628

IN CHARGE	S. KADERBEK
APPROVED BY	D.ZROKA
CHECKED BY	P.MAID
DESIGNED BY	L.SOMMER
DRAWN BY	T.SLEDGE
PROJECT NO.	2012-0021
FILE NAME	File Name

MARK	DATE	DESCRIPTION
	04/30/18	PREFINAL SUBMITTAL
	03/07/18	PREFINAL SUBMITTAL

LOCATION IDENTIFIER: **DR095**

95TH ST. NORTH BUS BRIDGE
DECK PLAN

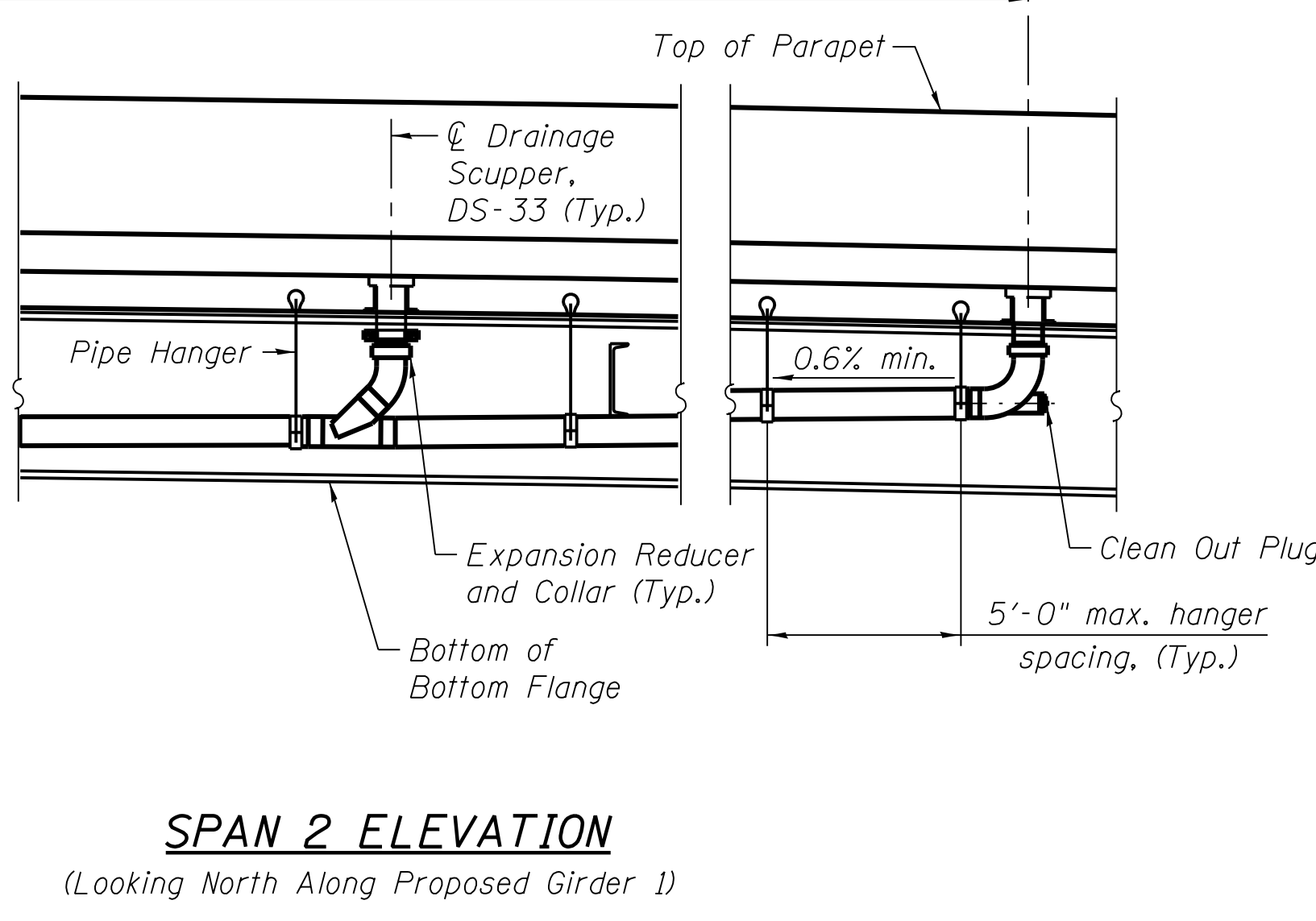
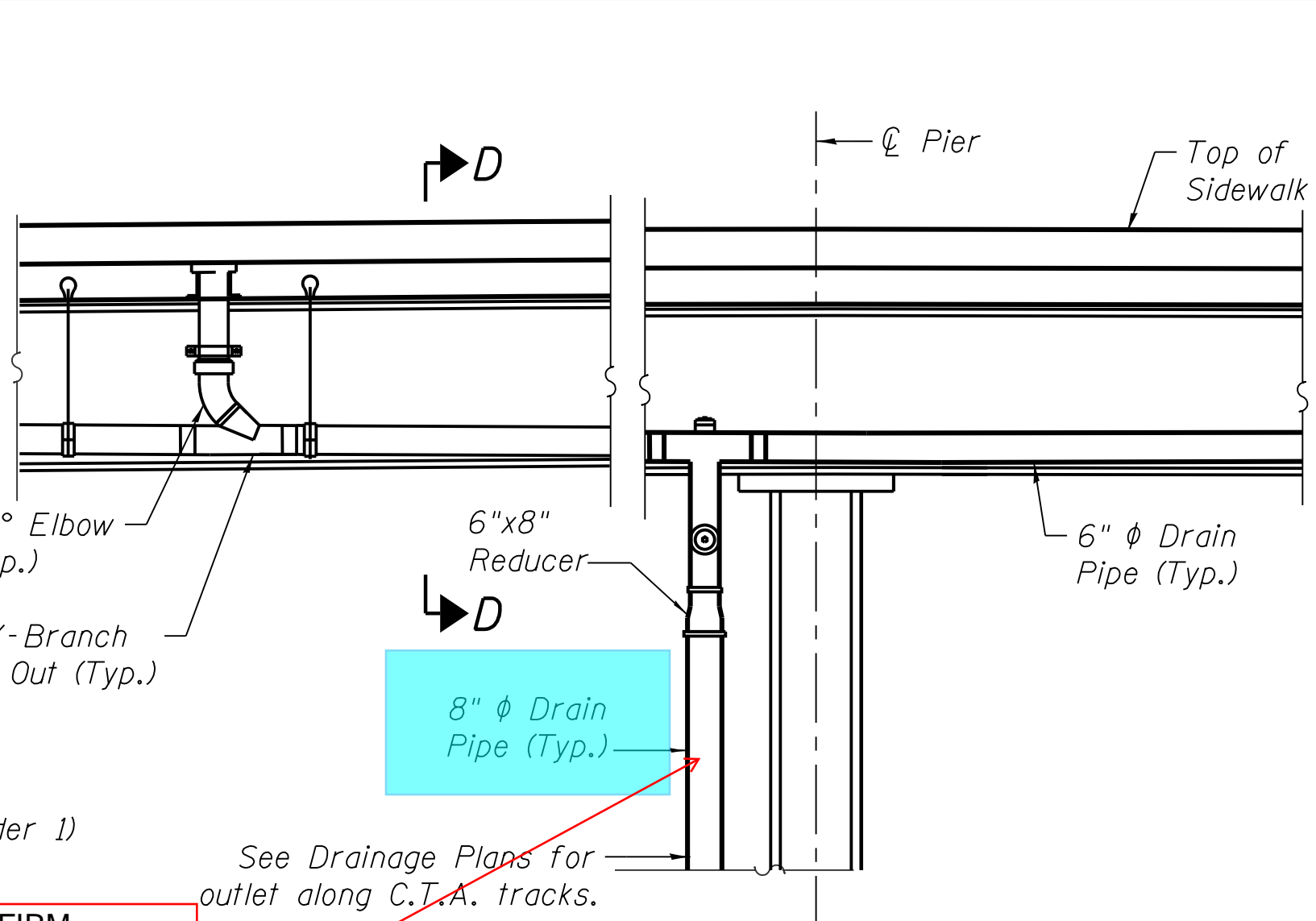
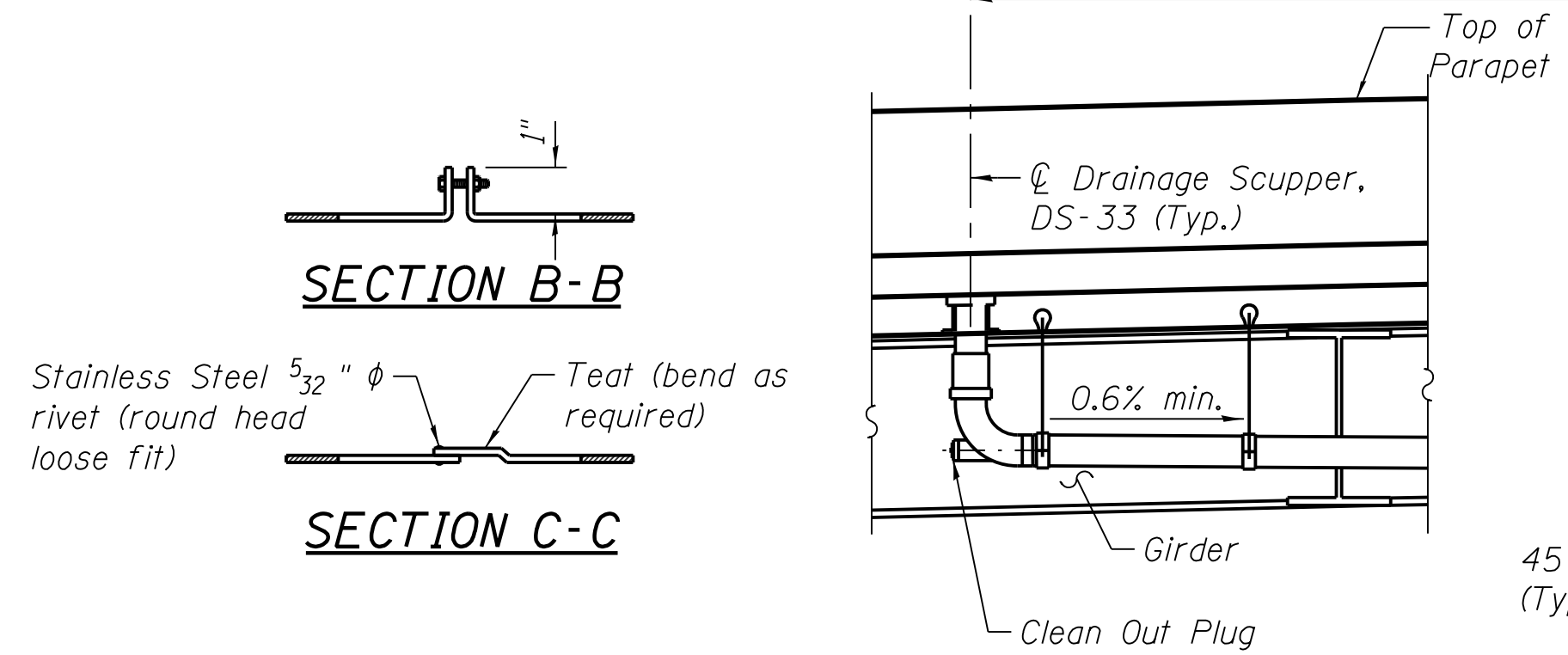
NBB-S-313

FILE NAME = 070_DR095_S-313.dgn
PLOT DATE = 4/30/2018

vscarpa

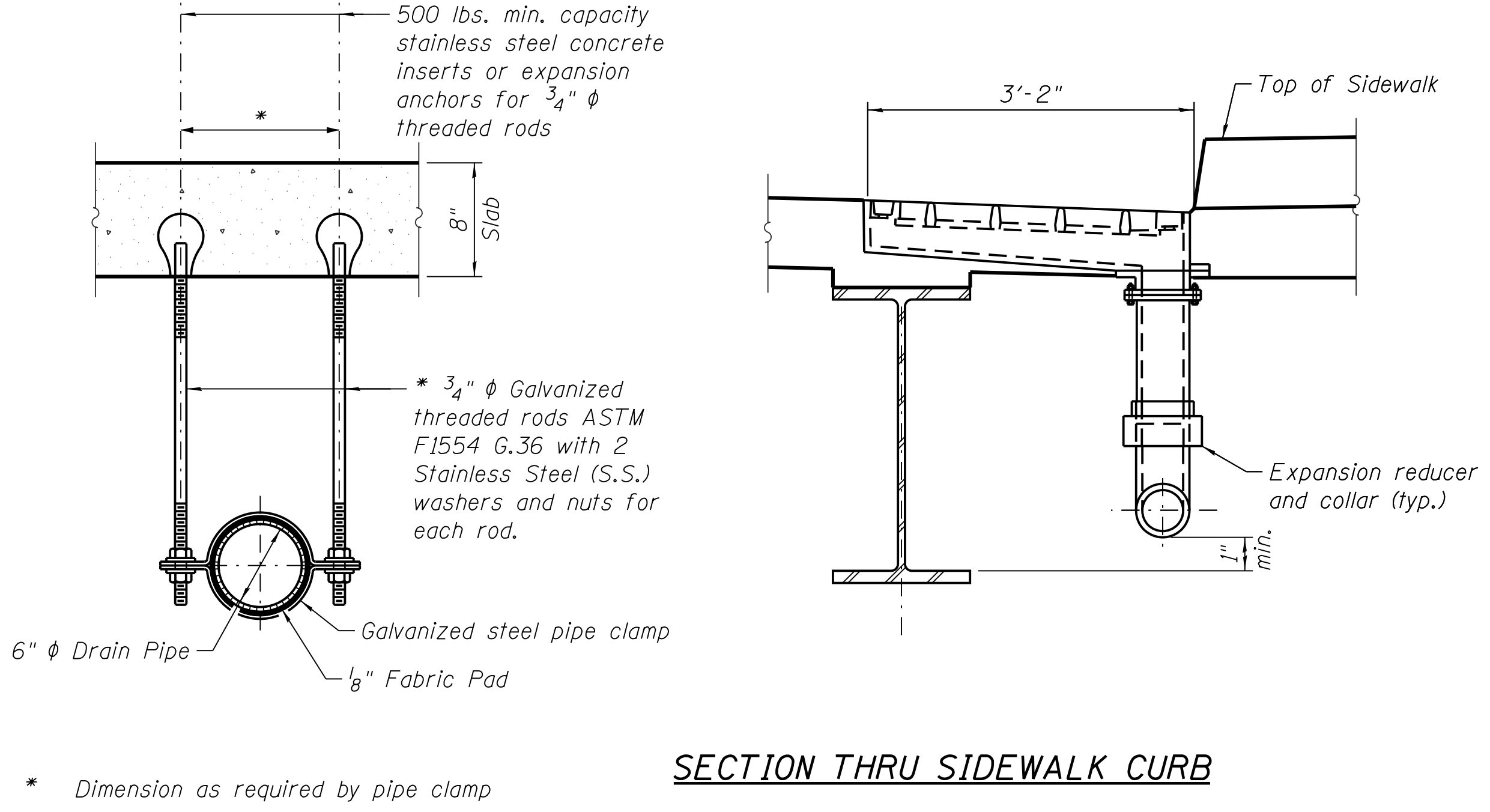
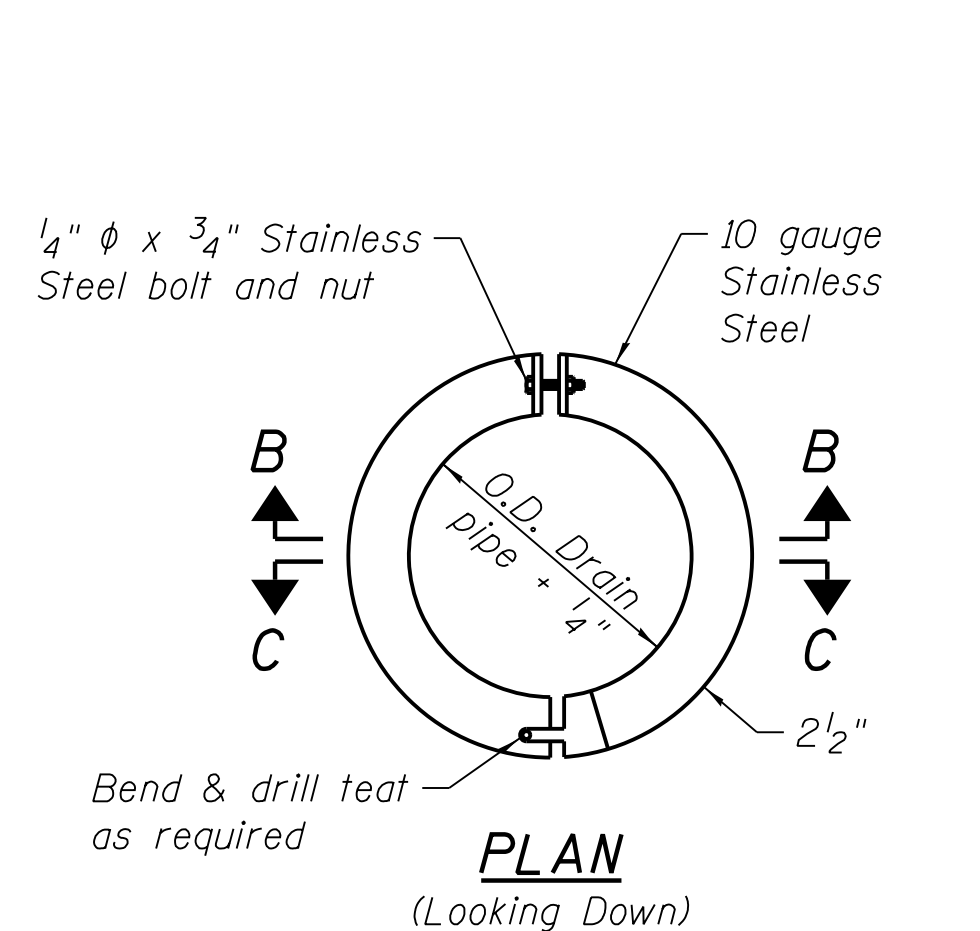
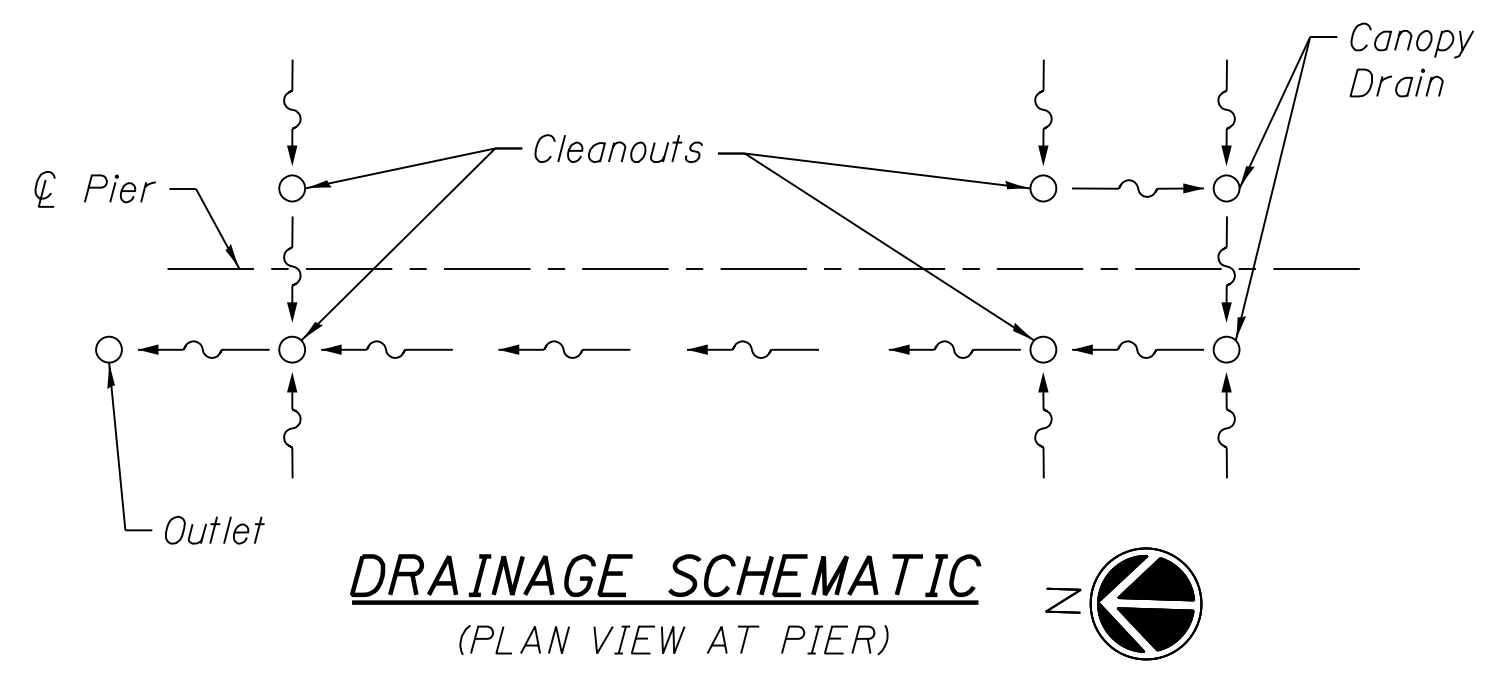
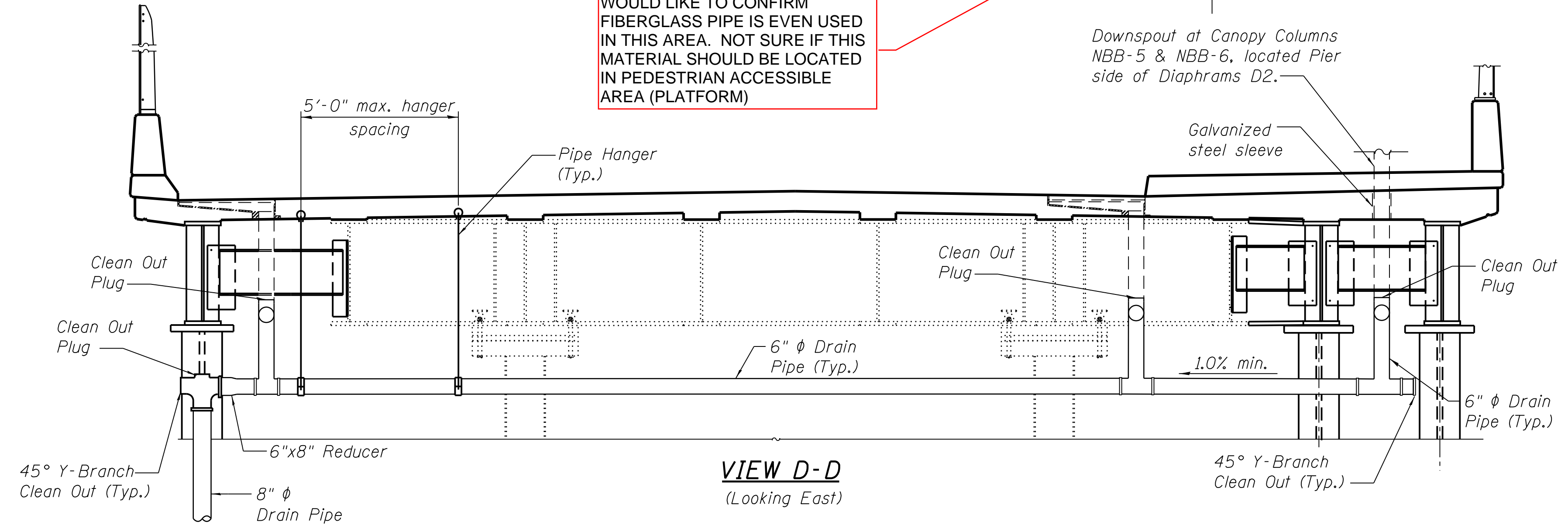
FILE NAME = 070_DR095_S-316B.dgn
PLOT DATE = 4/30/2018

See Sheet NBB-S-313 and Drainage Plans for Spacing

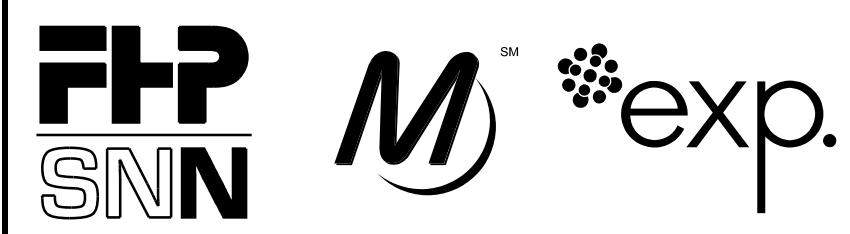


WOULD LIKE TO CONFIRM FIBERGLASS PIPE IS EVEN USED IN THIS AREA. NOT SURE IF THIS MATERIAL SHOULD BE LOCATED IN PEDESTRIAN ACCESSIBLE AREA (PLATFORM)

Downspout at Canopy Columns NBB-5 & NBB-6, located Pier side of Diaphragms D2.



- Notes:
- See sheet NBB-S-316A for drainage scupper details.
 - Scuppers & bridge drainage system shall be located clear of all diaphragms.
 - Fiberglass pipe shall conform to ASTM D 2996, RTRP short-time rupture strength hoop tensile stress of 30,000 p.s.i. minimum.
 - Pipe supports shall be provided on all pipes at 5'-0" max. spacing.
 - All pipe hangers, supports and hardware shall be hot-dipped galvanized in accordance with AASHTO M232 (ASTM A153).
 - All bolts, nuts and washers shall be Stainless Steel, Type 304.
 - Refer to Drainage system specification, section 33 41 10.



cta CHICAGO TRANSIT AUTHORITY ENGINEERING

SENSITIVE SECURITY INFORMATION
WARNING: THIS RECORD CONTAINS SENSITIVE SECURITY INFORMATION THAT IS CONTROLLED UNDER 49 CFR PARTS 15 AND 1550. NO PART OF THIS RECORD MAY BE DISCLOSED TO PERSONS WITHOUT A "NEED TO KNOW" AS DEFINED IN CFR PARTS 15 AND 1550, EXCEPT WITH THE WRITTEN PERMISSION OF THE ADMINISTRATOR OF THE TRANSPORTATION SECURITY ADMINISTRATION OR THE SECRETARY OF TRANSPORTATION. UNAUTHORIZED RELEASE MAY RESULT IN CIVIL PENALTY OR OTHER ACTION. FOR U.S. GOVERNMENT AGENCIES, PUBLIC DISCLOSURE IS GOVERNED BY 5 U.S.C. 552 AND 49 CFR PARTS 15 AND 1550.

DRAWING SCALE IS NOT GUARANTEED. CTA ASSUMES NO RISK OF LIABILITY FOR ERRORS CAUSED, DIRECTLY OR INDIRECTLY, BY SCALING OF THIS DRAWING.

95th Terminal Improvement
14 West 95th Street (North Terminal)
Chicago, IL 60628

IN CHARGE	S. KADERBEK
APPROVED BY	D.ZROKA
CHECKED BY	P.MAID
DESIGNED BY	L.SOMMER
DRAWN BY	T.SLEDGE
PROJECT NO.	2012-0021
FILE NAME	File Name

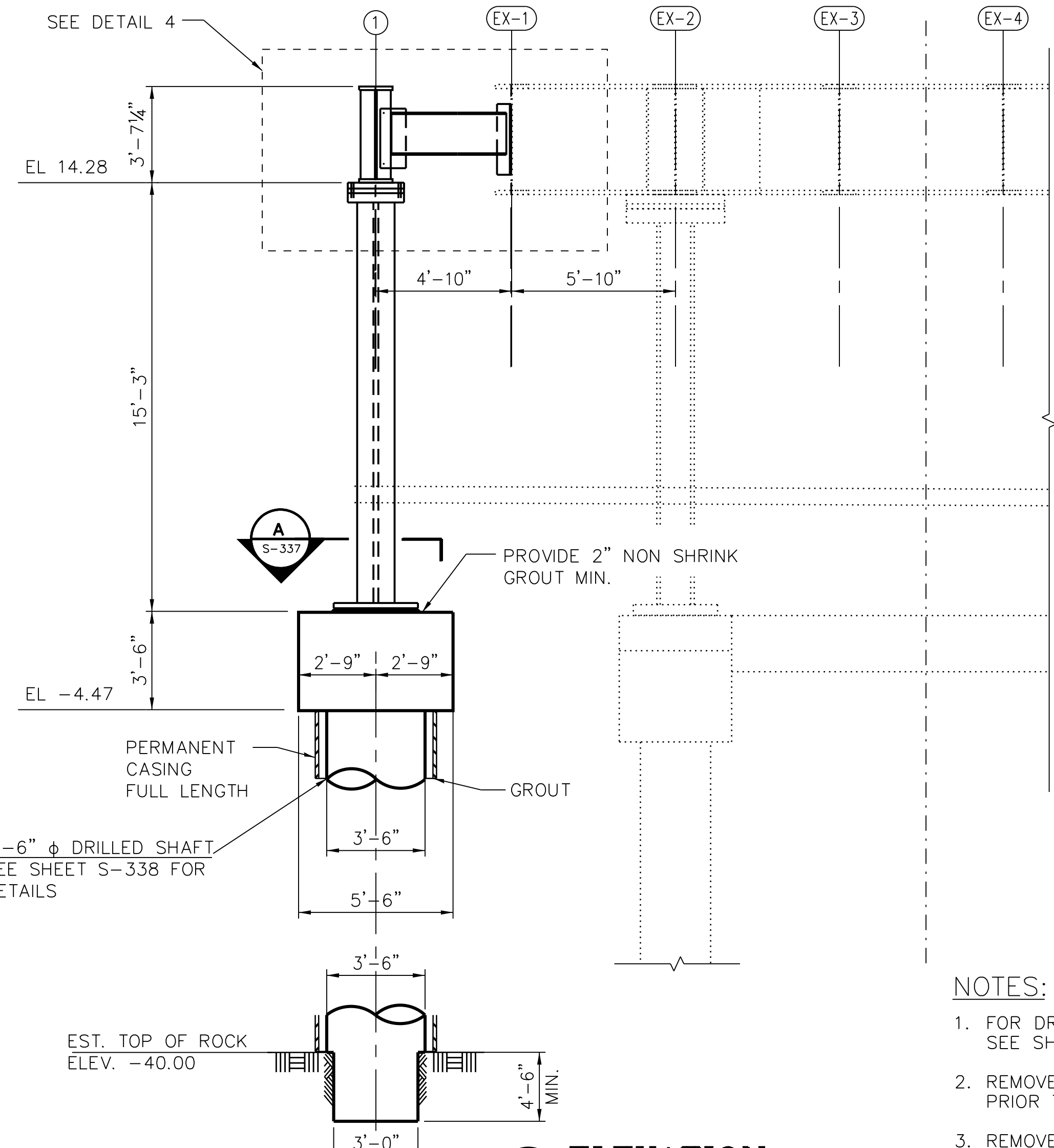
MARK	DATE	DESCRIPTION
	04/30/18	PREFINAL SUBMITTAL
	03/07/18	PREFINAL SUBMITTAL

LOCATION IDENTIFIER: DR095

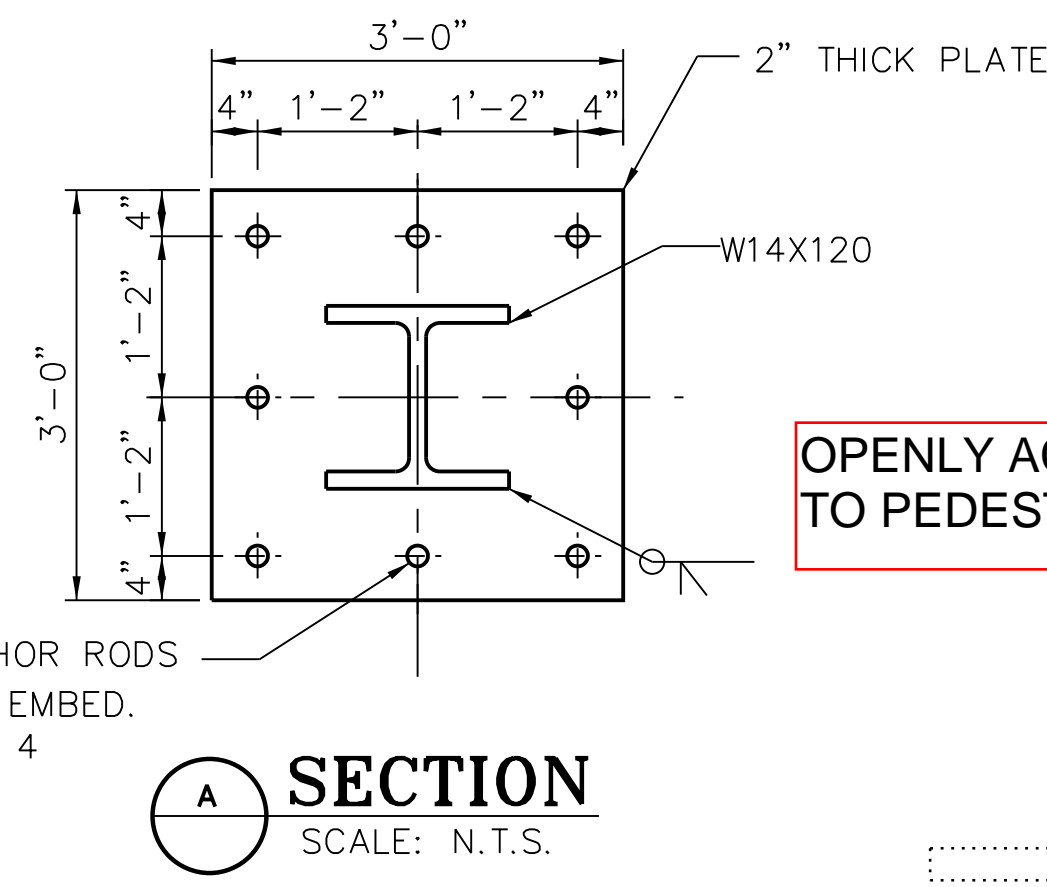
95TH ST. NORTH BUS BRIDGE
CLOSED DRAINAGE SYSTEM

NBB-S-316B

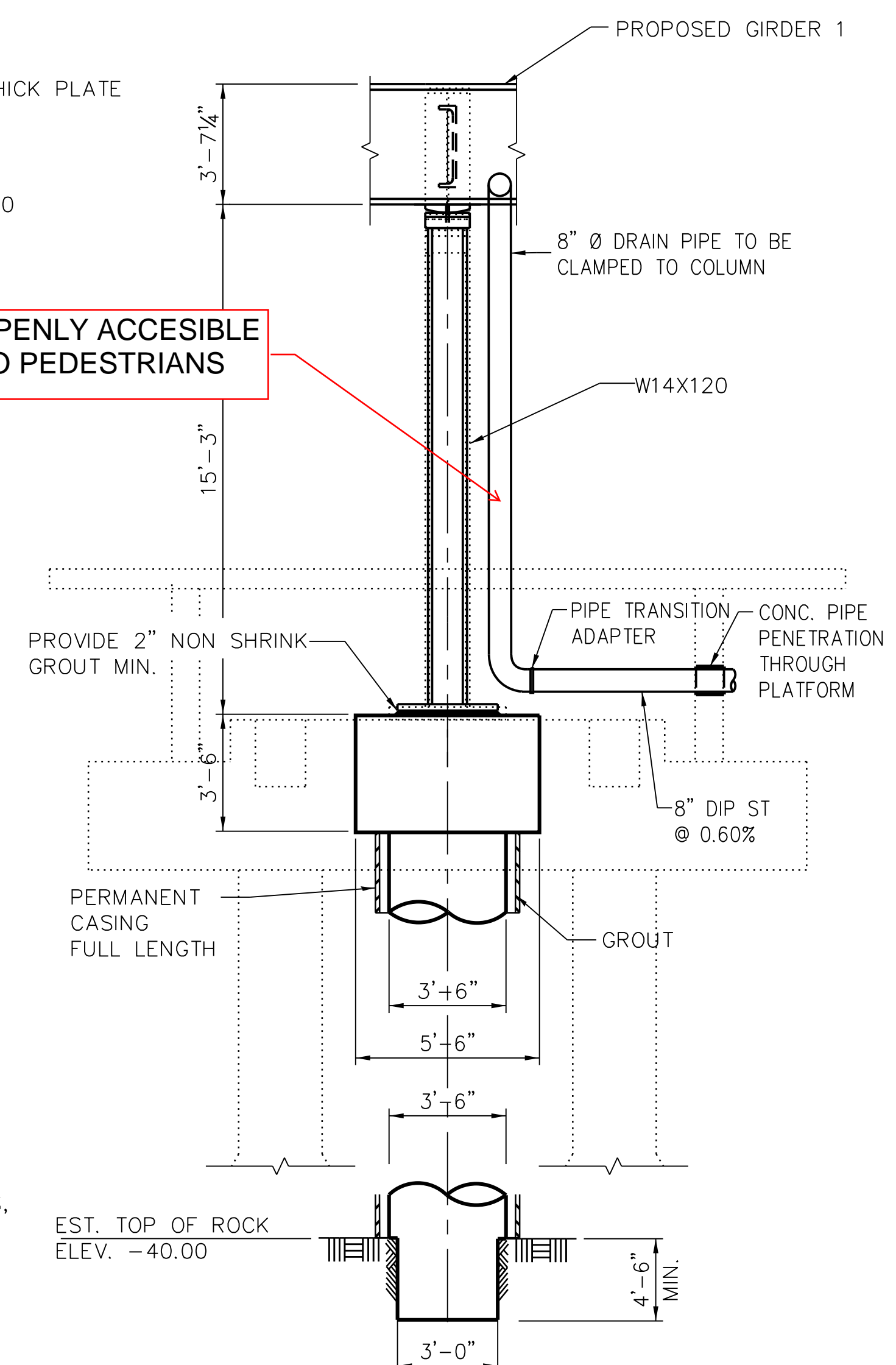
vscarp



1 ELEVATION
(LOOKING EAST @ NORTH END)



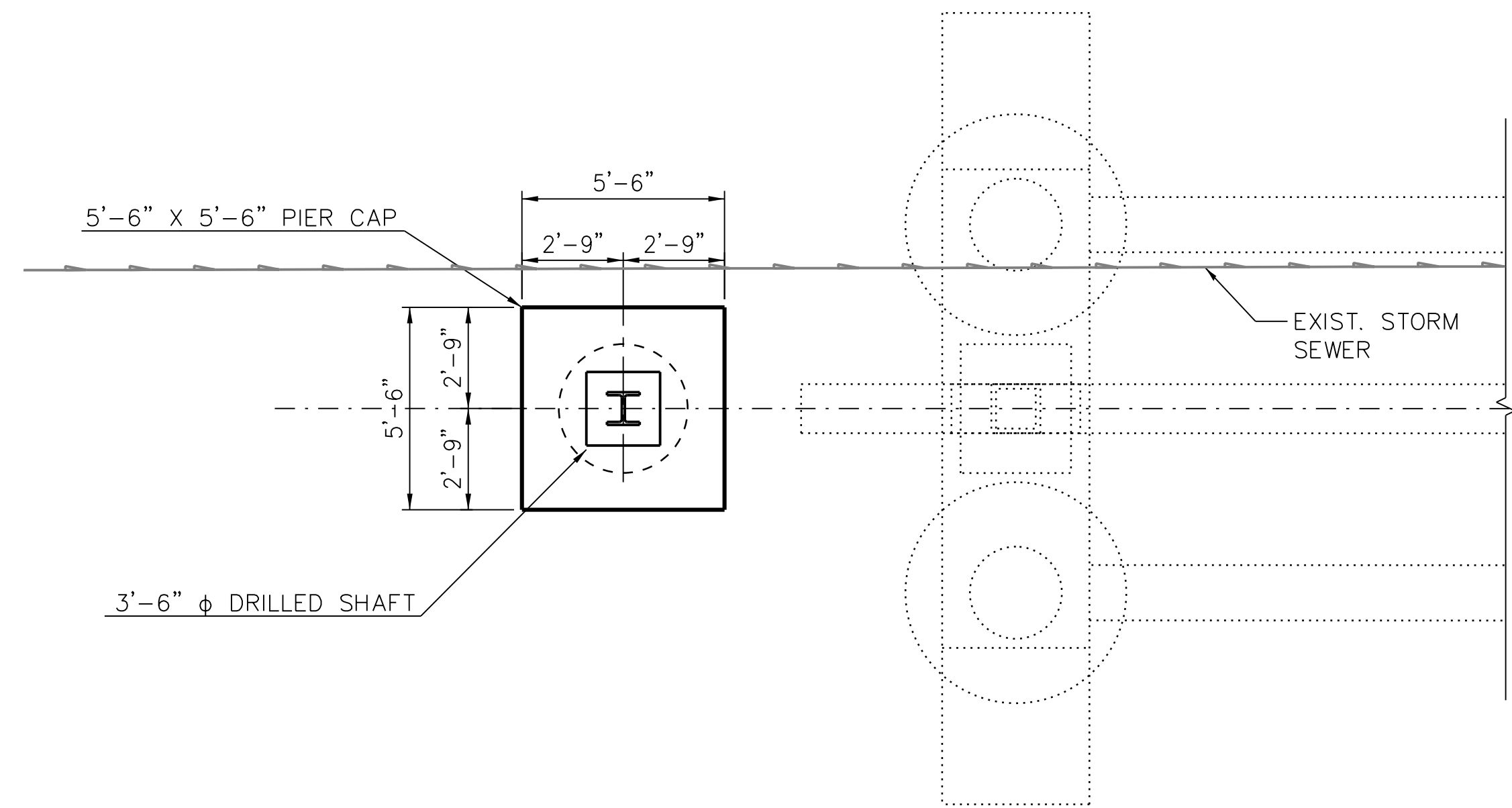
A SECTION
SCALE: N.T.S.



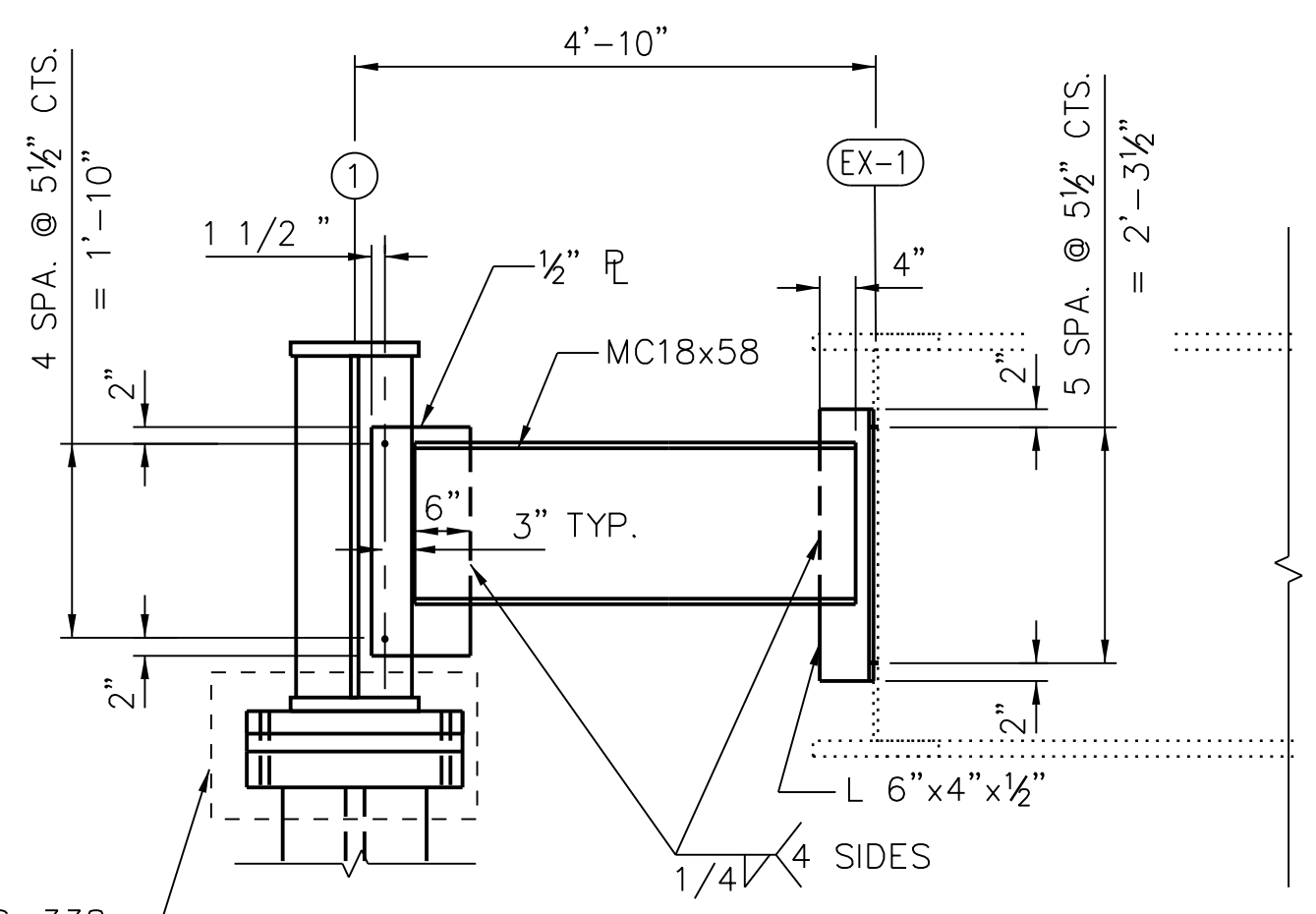
2 END VIEW
(LOOKING SOUTH)

NOTES:

- FOR DRILLED SHAFT DETAILS, PIER SECTION AND REINFORCEMENT DETAILS, SEE SHEET NBB-S-338
- REMOVE EXISTING BUILDING ESCALATOR PIT CONCRETE WALLS AND SLAB PRIOR TO CONSTRUCTION
- REMOVE AND REPLACE THE EXISTING PLATFORM. SEE ARCHITECTURAL DRAWINGS.
- PROVIDE HEX NUT AND PLATE WASHER AT TOP AND BOTTOM OF ANCHOR RODS.



3 PLAN



4 DETAIL
(LOOKING EAST)

FACTORED RESISTANCE FOR DRILLED SHAFTS D2				
SHAFT DIA (FT.)	MIN. ROCK SOCKET LENGTH (FT.)	ROCK SOCKET DIA (FT)	FACTORED RESISTANCE (K)	ALLOWABLE BEARING PRESSURE (KSF)
3'-6"	4'-6" (MIN.)	3'-0"	2600	370

FILE NAME = 070_DR095_S-337.dgn
PLOT DATE = 4/30/2018



CHICAGO TRANSIT AUTHORITY ENGINEERING

SENSITIVE SECURITY INFORMATION
WARNING: THIS RECORD CONTAINS SENSITIVE SECURITY INFORMATION THAT IS CONTROLLED UNDER 49 CFR PARTS 15 AND 1520. NO PART OF THIS RECORD MAY BE DISCLOSED TO PERSONS WITHOUT A "NEED TO KNOW" AS DEFINED IN CFR PARTS 15 AND 1520, EXCEPT WITH THE WRITTEN PERMISSION OF THE ADMINISTRATOR OF THE TRANSPORTATION SECURITY ADMINISTRATION OR THE SECRETARY OF TRANSPORTATION. UNAUTHORIZED RELEASE MAY RESULT IN CIVIL PENALTY OR OTHER ACTION. FOR U.S. GOVERNMENT AGENCIES, PUBLIC DISCLOSURE IS GOVERNED BY 5 U.S.C. 552 AND 49 CFR PARTS 15 AND 1520.

DRAWING SCALE IS NOT GUARANTEED. CTA ASSUMES NO RISK OF LIABILITY FOR ERRORS CAUSED, DIRECTLY OR INDIRECTLY, BY SCALING OF THIS DRAWING.

95th Terminal Improvement
14 West 95th Street (North Terminal)
Chicago, IL 60628

IN CHARGE	S. KADERBEK
APPROVED BY	D.ZROKA
CHECKED BY	P.MAID
DESIGNED BY	L.SOMMER
DRAWN BY	T.SLEDGE
PROJECT NO.	2012-0021
FILE NAME	File Name

MARK	DATE	DESCRIPTION
	04/30/18	PREFINAL SUBMITTAL
	03/07/18	PREFINAL SUBMITTAL

LOCATION IDENTIFIER: **DR095**
95TH ST. NORTH BUS BRIDGE
PIER PLAN AND ELEVATION
(SHEET 2 OF 2)

NBB-S-337