

THE ILLINOIS STATE TOLL HIGHWAY AUTHORITY

ADDENDUM NO. 1 TO CONTRACT REQUIREMENTS FOR CONTRACT I-18-4372 ILLINOIS STATE TOLL HIGHWAY AUTHORITY

Date: March 1, 2018

For which proposals will be received by the Illinois State Toll Highway Authority at its offices, 2700 Ogden Avenue, Downers Grove, Illinois 60515 until 10:30 A.M. local time, **March 20, 2018**.

NOTICE OF REVISION TO CONTRACT

NOTES:

1. The following revised Special Provision pages are included with this Addendum: J-72R and J-73R.
2. The following revised Contract Drawings are included with this Addendum: Drawings 2, 40, 41, 57, 58, 63, and 64.
3. The minutes and sign-in sheet for the Optional Pre-Bid Meeting held on February 26, 2018, accompany this Addendum.

CHANGES TO THE CONTRACT REQUIREMENTS

CHANGES TO THE CONTRACT SPECIAL PROVISIONS

Change #1

Special Provisions, Volume II, replace pages J-72 and J-73 with J-72R and J-73R. (attached)

This change contains the following revision:

- 1.1 Revised Asphalt Shoulder and Pressure Relief Joint Repair special provision.

CHANGES TO THE CONTRACT DRAWINGS

Change #2

Contract Plans, Sheet 2 (attached)

This change contains the following revision:

- 2.1 Revised Asphalt Mixes for Pavements/Shoulders table.

Change #3

Contract Plans, Sheets 40 and 41. (attached)

This change contains the following revision:

- 3.1 Revised Note 2.

Change #4

Contract Plans, Sheets 57, 58, 63, and 64. (attached)

This change contains the following revision:

- 4.1 Revised bridge decks of Bridge No. 347, 348, 353, and 354 to be in a single plane from parapet to parapet.
- 4.2 Revised the braces of Bridge No. 347 and 348 to be staggered.

END OF ADDENDUM CHANGES

ASPHALT SHOULDER AND PRESSURE RELIEF JOINT REPAIR (Illinois Tollway)

Effective: September 21, 2011

Revised: February 20, 2018

Description. This work shall consist of partial depth or full depth sawcutting and satisfactorily removing existing pavement and reinforcement, restoration of substrate, tack coating and priming exposed surfaces, and furnishing, placing, and compacting asphalt mixtures in sufficient lifts with adequate equipment to obtain the specified densities for the class and type of patch specified at the designated locations or as directed by the Engineer. ASPHALT PRESSURE RELIEF JOINTS fully replaced shall be classified as Class D1 or D3 patches of the type specified at designated locations. ASPHALT PRESSURE RELIEF JOINT REPAIRS shall be classified as Class D4 patches of the type and thickness specified at designated locations. Removal and replacement of pavement shall be in accordance with Section 442 of the Standard Specifications except as modified herein. When WMA mixtures are required by design, an HMA mixture may be utilized for special or low tonnage applications in lieu of WMA mixtures upon approval by the Engineer at no additional cost to the Illinois Tollway. When HMA mixtures are required by design, a WMA mix may be utilized for special or low tonnage application in lieu of HMA mixtures upon approval by the Engineer at no additional cost to the Illinois Tollway.

Revise Article 442.01 of the Standard Specifications to read.

442.01 Description. This work shall consist of the removal of the existing pavement, the necessary excavation and the replacement with the class and type of patch specified at designated locations.

This work will be classified as follows:

- Class A Patches: Pavement Removal and Continuously Reinforced Portland Cement Concrete Replacement
- Class B Patches: Pavement Removal and Portland Cement Concrete Replacement Using Dowels or Tie Bars
- Class C Patches: Pavement Removal and Portland Cement Concrete Replacement
- Class D1 Patches: Pavement Removal and Asphalt Mixture Replacement with Binder Course below Top 2 inches and Surface Course for the Top 2 inches
- Class D2 Patches: Pavement Removal following Shoulder Surface Removal and Asphalt Mixture Replacement with Binder Course up to the elevation of the removed surface
- Class D3 Patches: Pavement Removal and Asphalt Mixture Replacement with Binder Course
- Class D4 Patches: Partial Depth Pavement Removal to the specified depth and Replacement with Binder Course below the Top 1.5 inches and Surface Course for the Top 1.5 inches

For each of the above classifications, the work on a lane width or less shall be further quantified by size as follows:

- Type I Less than 5 sq yd
- Type II 5 sq yd or more, but less than 15 sq yd
- Type III 15 sq yd or more, but less than 25 sq yd

Type IV 25 sq yd or more

Materials. WMA and HMA mix designs and production shall be in accordance with the special provision for ASPHALT BINDER AND SURFACE COURSE MIXTURES. All other materials for patching shall comply with Article 442.02 of the Standard Specifications.

Revise the second paragraph of Article 442.11 of the Standard Specifications to read.

Where the Illinois Tollway requires a specific class of patch be used, this work will be paid for at the contract unit price per square yard for CLASS D2 PATCHES, of the class, mix type and thickness specified.

Pay Item Number	Designation	Unit of Measure
JI442416	CLASS D2 PATCHES, TYPE I, 7 INCHES	SQ YD
JI442420	CLASS D2 PATCHES, TYPE II, 7 INCHES	SQ YD
JI442424	CLASS D2 PATCHES, TYPE III, 7 INCHES	SQ YD
JI442428	CLASS D2 PATCHES, TYPE IV, 7 INCHES	SQ YD

INDEX OF DRAWINGS

DWG. NO	SHEET NO.	DESCRIPTION
1	CV-1	TITLE SHEET
2	IN-1	INDEX OF DRAWINGS AND LIST OF STANDARDS
3	GEN-1	GENERAL NOTES
4	PS-1	SUGGESTED PROGRESS SCHEDULE
5	AT-1	ALIGNMENT AND TIES
6	SOQ-1	SUMMARY OF QUANTITIES
7	SCH-1	SCHEDULE OF QUANTITIES
8-11	TYP-1 to TYP-4	TYPICAL SECTIONS
MAINTENANCE OF TRAFFIC PLAN		
12	MTN-1	MAINTENANCE OF TRAFFIC STAGING SEQUENCE
13-15	MTT-1 to MTT-3	MAINTENANCE OF TRAFFIC TYPICAL SECTIONS
16-21	MOT-1 to MOT-6	MAINTENANCE OF TRAFFIC PLANS - STAGE 1
22-24	MOT-7 to MOT-9	MAINTENANCE OF TRAFFIC PLANS - STAGE 1A
25-32	MOT-10 to MOT-17	MAINTENANCE OF TRAFFIC PLANS - STAGE 2
ROADWAY REMOVAL PLAN		
33-38	REM-1 to REM-6	ROADWAY REMOVAL PLANS
ROADWAY PLAN		
39-44	RDY-1 to RDY-6	PROPOSED ROADWAY PLANS
UTILITY MATRIX		
45	UTL-1	UTILITY MATRIX
EROSION AND SEDIMENT CONTROL PLAN		
46	ES-1	EROSION AND SEDIMENT CONTROL SCHEDULE
47-52	ESC-1 to ESC-6	EROSION AND SEDIMENT CONTROL PLANS
PAVEMENT MARKING AND SIGNING PLANS		
53-54	PMK-1 to PMK-2	PAVEMENT MARKING AND SIGNING PLANS
BEAM FABRICATION BRIDGE NO. 347 & 348		
55-60	SA-1 to SA-6	BEAM FABRICATION BRIDGE NO. 347 & 348
BEAM FABRICATION BRIDGE NO. 353 & 354		
61-66	SB-1 to SB-6	BEAM FABRICATION BRIDGE NO. 353 & 354

IDOT STANDARD DRAWINGS

STANDARD NO.	TITLE
000001-06	STANDARD SYMBOLS, ABBREVIATIONS AND PATTERNS
001001-02	AREAS OF REINFORCEMENT BARS
001006	DECIMAL OF AN INCH AND OF A FOOT
442201-03	CLASS C AND D PATCHES
701501-06	URBAN LANE CLOSURE, 2L, 2W, UNDIVIDED

TOLLWAY STANDARD DRAWINGS

STANDARD NO. AND TITLE

SECTION A - ROADWAY / PAVEMENT

A18-03 PRECAST PAVEMENT SLABS

SECTION B - DRAINAGE STRUCTURES, CURBS, CURBS & GUTTER AND DITCHES

B19-02 EROSION PROTECTION

SECTION C - GUARDRAIL / MEDIAN BARRIER

NONE

SECTION D - ROADWAY APPURTENANCES

D2-04 SYMBOLS AND PATTERNS

D6-07 PAVEMENT MARKING AND SHOULDER RUMBLE STRIP DETAILS

SECTION E - MAINTENANCE OF TRAFFIC

E1-06 CONSTRUCTION SIGNS

E2-07 LANE CLOSURE DETAILS

E3-06 SHOULDER CLOSURE DETAILS

SECTION F - SIGN STRUCTURE

NONE

SECTION G - STRUCTURAL

NONE

SECTION H - ROADWAY LIGHTING AND ELECTRICAL

NONE

SECTION K - TEMPORARY EROSION CONTROL

K1-06 TEMPORARY EROSION AND SEDIMENT CONTROLS

ASPHALT MIXES FOR PAVEMENTS/SHOULDERS

LOCATION	OPERATIONS	CODE	ITEM	UNIT	VOIDS	TYPICAL THICKNESS	MIX TYPE
AS INDICATED BY DESIGN	SHOULDER OVERLAY	J1406510	WARM-MIX ASPHALT SURFACE COURSE, MIX "D", N70	TON	4% @ 70 GYR	2.00"	WARM MIX ASPHALT SURFACE COURSE, IL-9.5 MIX D, N70 (1)
	SHOULDER PATCHING	J1442416 J1442420 J1442424 J1442428	CLASS D2 PATCHES, TYPE I, 7 INCHES CLASS D2 PATCHES, TYPE II, 7 INCHES CLASS D2 PATCHES, TYPE III, 7 INCHES CLASS D2 PATCHES, TYPE IV, 7 INCHES	SO YD	3% @ 50 GYR	7.00" (2 EQUAL LIFTS)	HOT-MIX ASPHALT BINDER COURSE, IL-19.0. N50 (1)

IDOT MIXTURES TABLE

MIXTURE TYPE	THICKNESS	MIX TYPE	VOIDS @ Ndes	QUALITY MANAGEMENT PROGRAM (QMP)
FRONTAGE ROAD				
HOT-MIX ASPHALT BINDER COURSE, IL-19.0, N50	4"	IL 19.0 mm	4% @ 50 Gyr.	QA/QC
HOT-MIX ASPHALT SURFACE COURSE, MIX "D", N50	2"	IL 9.5 mm	4% @ 50 Gyr.	QA/QC

QMP DESIGNATION: QUALITY CONTROL/QUALITY ASSURANCE (QC/QA)

TOLLWAY MIXTURE NOTES:

- QUANTITIES OF WARM AND HOT MIX ASPHALT ARE BASED ON THE UNIT WEIGHT OF 112.0 LBS/SOYD/IN.

IDOT MIXTURE NOTES:

- THE UNIT WEIGHT USED TO CALCULATE ALL HMA SURFACE MIXTURE QUANTITIES IS 112 LBS/SO YD/IN.
- FOR NON-POLYMERIZED HMA THE "AC TYPE" SHALL BE "PG 64-22" UNLESS MODIFIED BY DISTRICT ONE SPECIAL PROVISIONS.
- FOR USE OF RECYCLED MATERIALS SEE SPECIAL PROVISIONS.
- QUALITY MANAGEMENT PROGRAM (QMP) IDENTIFIES THE PARTICULAR QUALITY CONTROL SPECIFICATION THAT APPLIES TO THE HMA MIXTURE.

DRAWN BY YS DATE 2/16/2018
CHECKED BY TRK DATE 2/18/2018



1200 North Ashland Ave
6th Floor
Chicago, IL 60622
PHONE: 312.787.0707



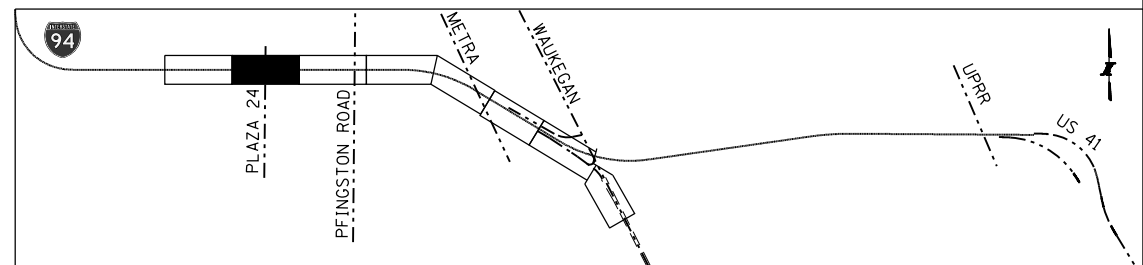
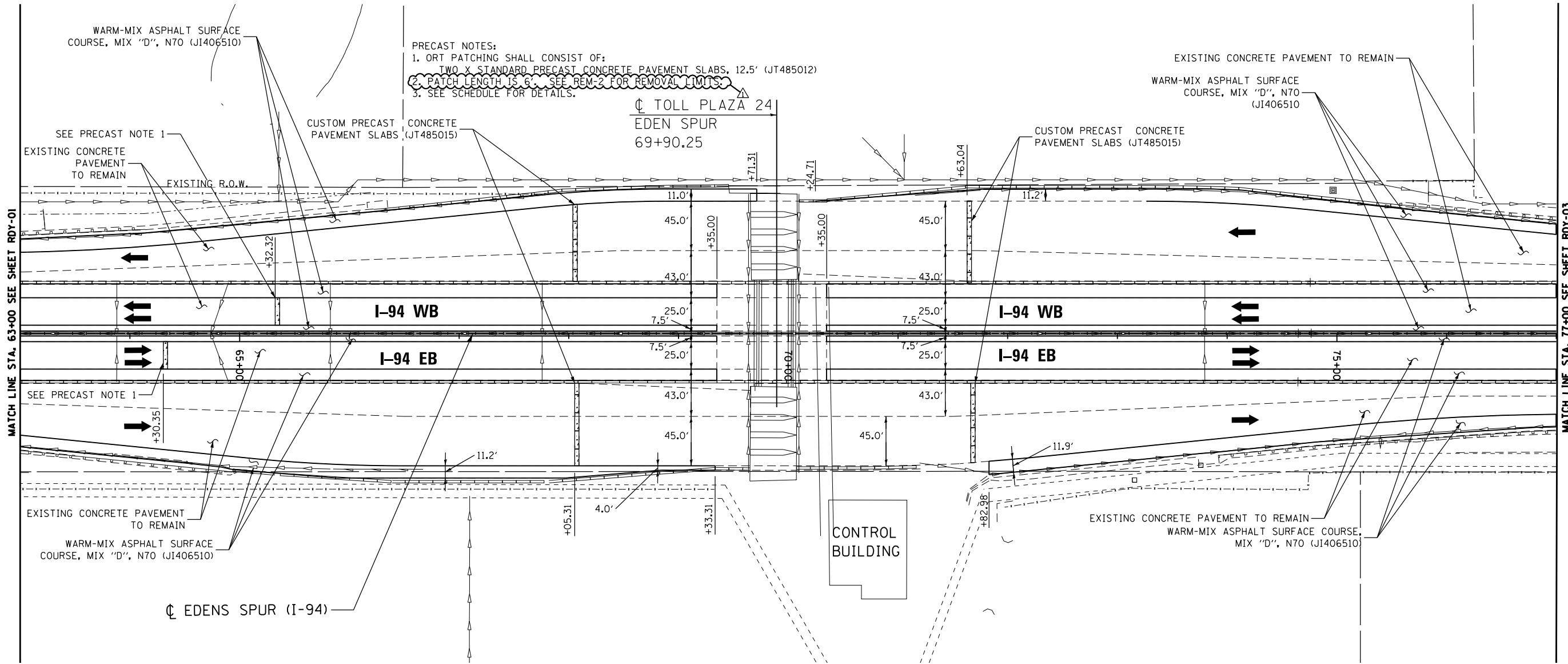
REVISIONS		
NO.	DATE	DESCRIPTION
1	3-1-2018	ADDENDUM NO. 1

CONTRACT NO. I-18-4372

INDEX OF DRAWINGS AND LIST OF STANDARDS

SHT NO. IN-1

DRAWING NO. 2 OF 66



DRAWN BY YS DATE 2/16/2018
 CHECKED BY TRK DATE 2/18/2018



1200 North Ashland Ave
 6th Floor
 Chicago, IL 60622
 PHONE: 312.787.0707



REVISIONS		
NO.	DATE	DESCRIPTION
1	3-1-2018	ADDENDUM NO. 1

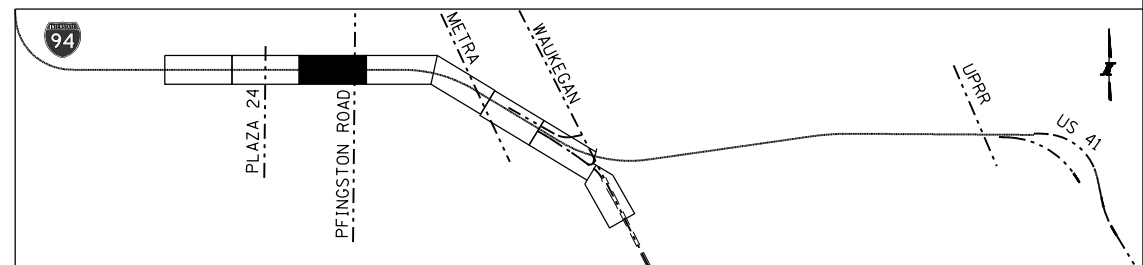
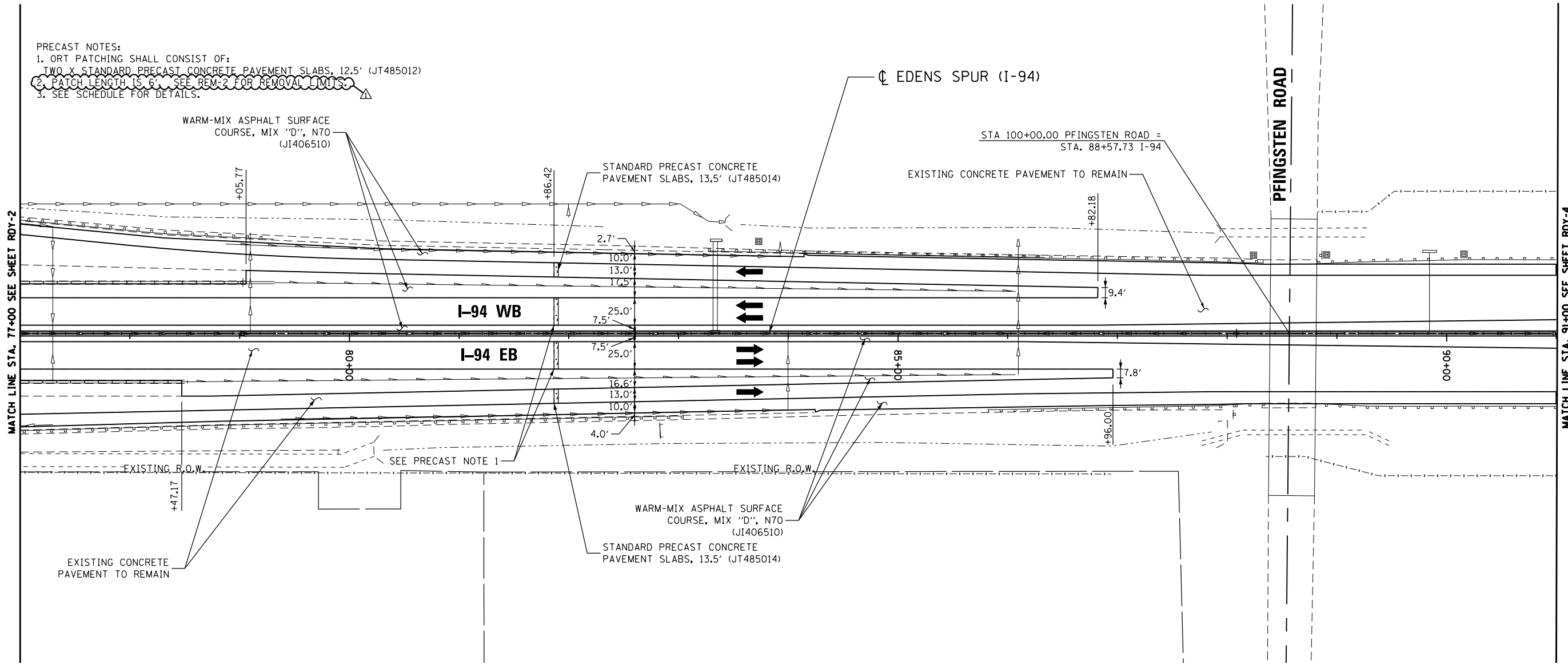
CONTRACT NO. I-18-4372
 PROPOSED ROADWAY PLAN
 STA. 63+00 TO STA. 77+00

SHT NO. RDY-2
 DRAWING NO.
 40 OF 66



PRECAST NOTES:

1. ORT PATCHING SHALL CONSIST OF:
TWO X STANDARD PRECAST CONCRETE PAVEMENT SLABS, 12.5' (JT485012)
2. PATCH LENGTH IS 6'. SEE REM-2 FOR REMOVAL LIMITS.
3. SEE SCHEDULE FOR DETAILS.



DRAWN BY YS **DATE** 2/16/2018
CHECKED BY TRK **DATE** 2/18/2018



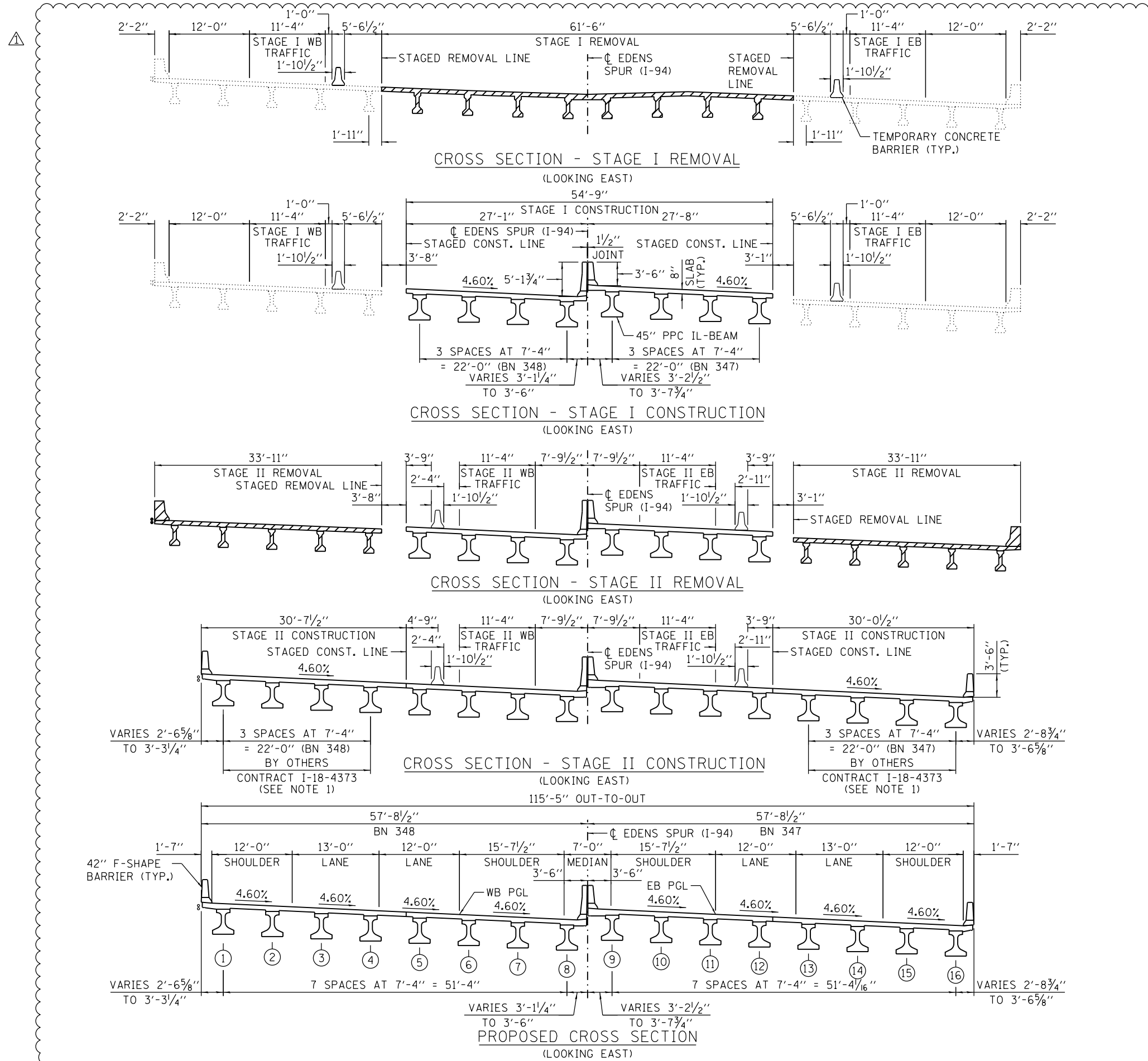
1200 North Ashland Ave
 6th Floor
 Chicago, IL 60622
 PHONE: 312.787.0707



REVISIONS		
NO.	DATE	DESCRIPTION
1	3-1-2018	ADDENDUM NO. 1

CONTRACT NO. I-18-4372
PROPOSED ROADWAY PLAN
 STA. 77+00 TO STA. 91+00

SHT NO. RDY-3
DRAWING NO.
 41 OF 66



LEGEND:

EXISTING STRUCTURE REMOVAL

NOTES:

- BEAMS 5-12 ARE INCLUDED WITH THIS CONTRACT. BEAMS 1-4 AND 13-16 ARE INCLUDED IN CONTRACT I-18-4373.

DRAWN BY TLR DATE 03/01/2018
 CHECKED BY MDS DATE 03/01/2018

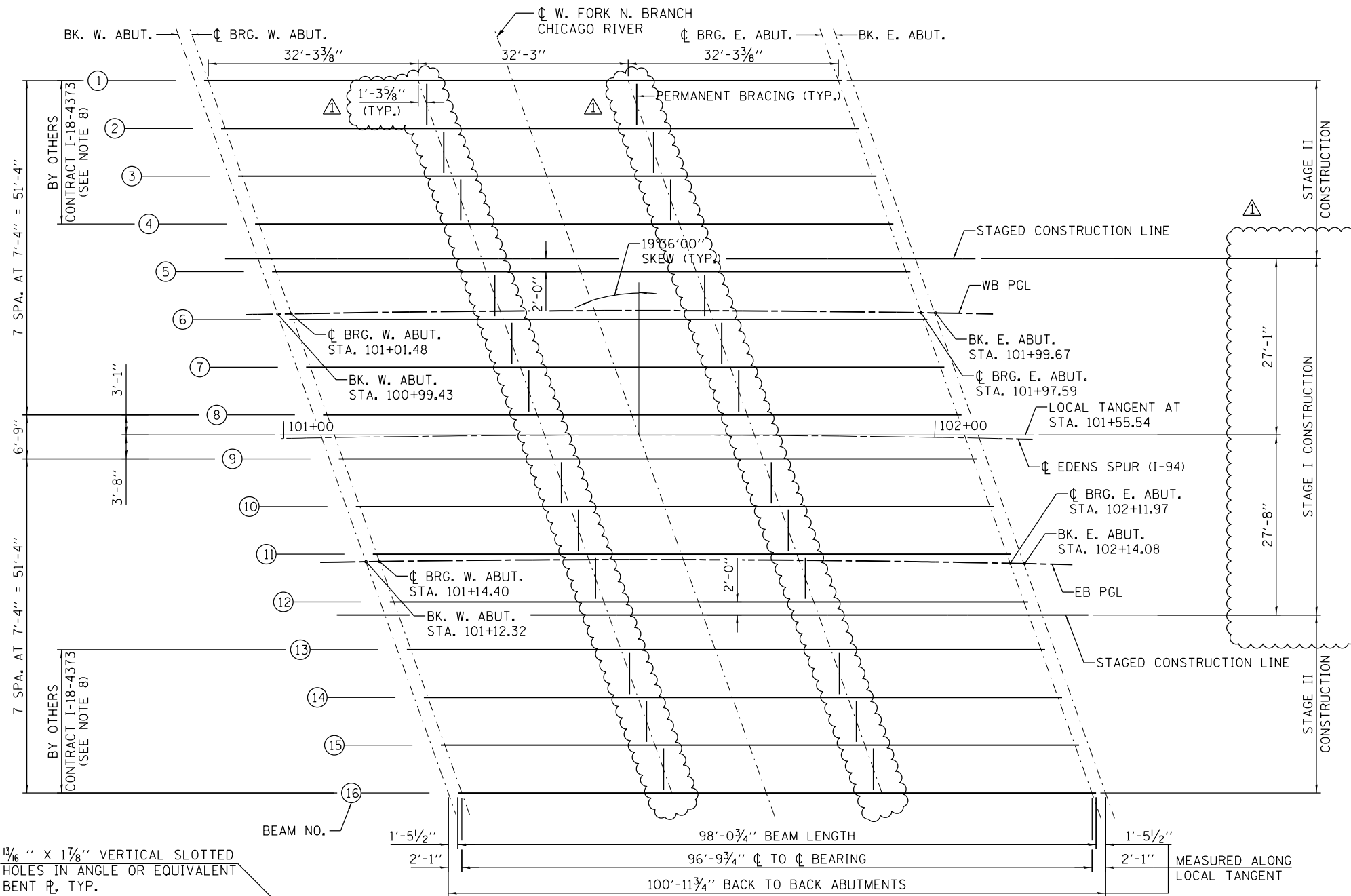


THE ILLINOIS STATE TOLL HIGHWAY AUTHORITY
 2700 OGDEN AVENUE
 DOWNERS GROVE,
 ILLINOIS 60515

REVISIONS		
NO.	DATE	DESCRIPTION
1	3/1/2018	ADDENDUM 1

CONTRACT NO. I-18-4373
 I-94 OVER W. FORK CHICAGO RIVER
 (BNS 347 & 348) - CONSTRUCTION STAGING

SHT NO. SA-3
 DRAWING NO. 57 OF 66



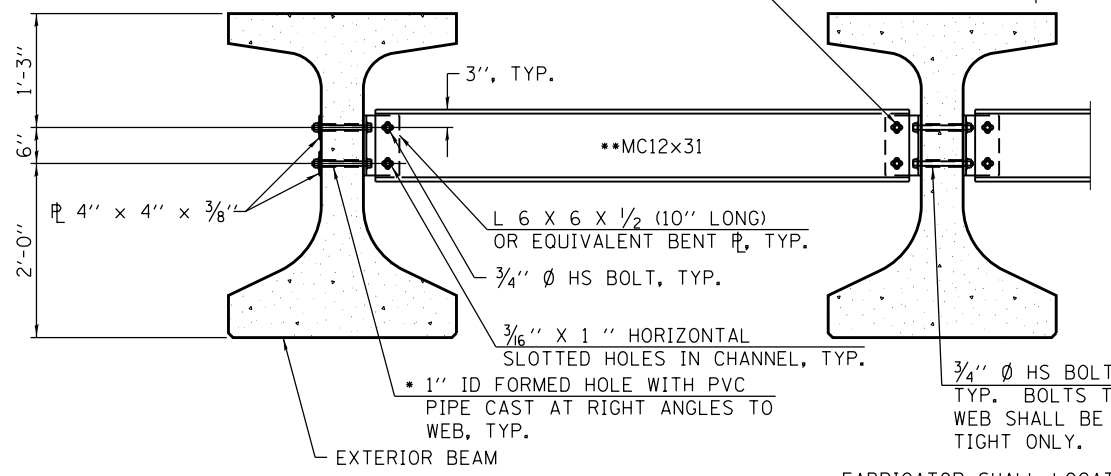
**INTERIOR BEAM
MOMENT TABLE**

	0.5 SPAN
I (in ⁴)	182,623
I' (in ⁴)	542,150
S _b (in ³)	10,045
S _b ' (in ³)	16,932
S ₊ (in ³)	6,809
S ₊ ' (in ³)	23,592
DC1 (k/ft)	1.96
M _{DC1} (k)	1,883
DC2 (k/ft)	0.14
M _{DC2} (k)	166
DW (k/ft)	0.39
M _{DW} (k)	401
M _{LL + IM} (k)	1,693

**INTERIOR BEAM
REACTION TABLE**

	W. ABUT.	E. ABUT.
R _{DC1} (k)	92.9	92.9
R _{DC2} (k)	7.0	7.0
R _{DW} (k)	132.3	132.3
R _{LL + IM} (k)	96.0	96.0
R _{TOTAL} (k)	328.2	328.2

13/16" X 1 7/8" VERTICAL SLOTTED HOLES IN ANGLE OR EQUIVALENT BENT PLATE, TYP.



**PERMANENT BRACING DETAILS
FOR IL45 BEAMS**

- FABRICATOR SHALL LOCATE TO MISS STRANDS WITHIN PERMISSIBLE TOLERANCES.
- ALTERNATE MC12X35 CHANNELS ARE PERMITTED TO FACILITATE MATERIAL ACQUISITION.

FRAMING PLAN

NOTES:

- ALL MATERIAL FOR BRACING SHALL BE HOT DIP GALVANIZED ACCORDING TO AASHTO M111 UNLESS OTHERWISE NOTED.
- TWO HARDENED WASHERS ARE REQUIRED FOR EACH SET OF OVERSIZED HOLES.
- ALL HOLES SHALL BE 15/16" Ø UNLESS OTHERWISE NOTED.
- 5/16" X 3" X 3" PLATE WASHERS ARE REQUIRED OVER ALL SLOTTED HOLES.
- ALL BOLTS SHALL BE GALVANIZED ACCORDING TO AASHTO M232.
- BRACING SHALL BE INSTALLED AS BEAMS ARE ERECTED AND TIGHTENED AS SOON AS POSSIBLE DURING ERECTION.
- PERMANENT BRACING SHALL NOT BE PAID FOR SEPARATELY, BUT SHALL BE INCLUDED IN THE COST OF FURNISHING PRECAST PRESTRESSED CONCRETE IL45-2438 BEAMS.
- BEAMS 5-12 ARE INCLUDED IN THIS CONTRACT. BEAMS 1-4 AND 13-16 ARE INCLUDED IN CONTRACT I-18-4373.

- I: NON-COMPOSITE MOMENT OF INERTIA OF BEAM SECTION (in⁴).
- I': COMPOSITE MOMENT OF INERTIA OF BEAM SECTION (in⁴).
- S_b: NON-COMPOSITE SECTION MODULUS FOR THE BOTTOM FIBER OF THE PRESTRESSED BEAM (in³).
- S_b': COMPOSITE SECTION MODULUS FOR THE BOTTOM FIBER OF THE PRESTRESSED BEAM (in³).
- S₊: NON-COMPOSITE SECTION MODULUS FOR THE TOP FIBER OF THE PRESTRESSED BEAM (in³).
- S₊': COMPOSITE SECTION MODULUS FOR THE TOP FIBER OF THE PRESTRESSED BEAM (in³).
- DC1: UN-FACTORED NON-COMPOSITE DEAD LOAD (kips/ft).
- M_{DC1}: UN-FACTORED MOMENT DUE TO NON-COMPOSITE DEAD LOAD (kip-ft).
- DC2: UN-FACTORED LONG-TERM COMPOSITE (SUPERIMPOSED EXCLUDING FUTURE WEARING SURFACE) DEAD LOAD (kips/ft).
- M_{DC2}: UN-FACTORED MOMENT DUE TO LONG-TERM COMPOSITE (SUPERIMPOSED EXCLUDING FUTURE WEARING SURFACE) DEAD LOAD (kip-ft).
- DW: UN-FACTORED LONG-TERM COMPOSITE (SUPERIMPOSED FUTURE WEARING SURFACE ONLY) DEAD LOAD (kips/ft).
- M_{DW}: UN-FACTORED MOMENT DUE TO LONG-TERM COMPOSITE (SUPERIMPOSED FUTURE WEARING SURFACE ONLY) DEAD LOAD (kip-ft).
- M_{LL + IM}: UN-FACTORED LIVE LOAD MOMENT PLUS DYNAMIC LOAD ALLOWANCE (IMPACT) (kip-ft).

DRAWN BY JNP DATE 03/01/2018
CHECKED BY MDS DATE 03/01/2018

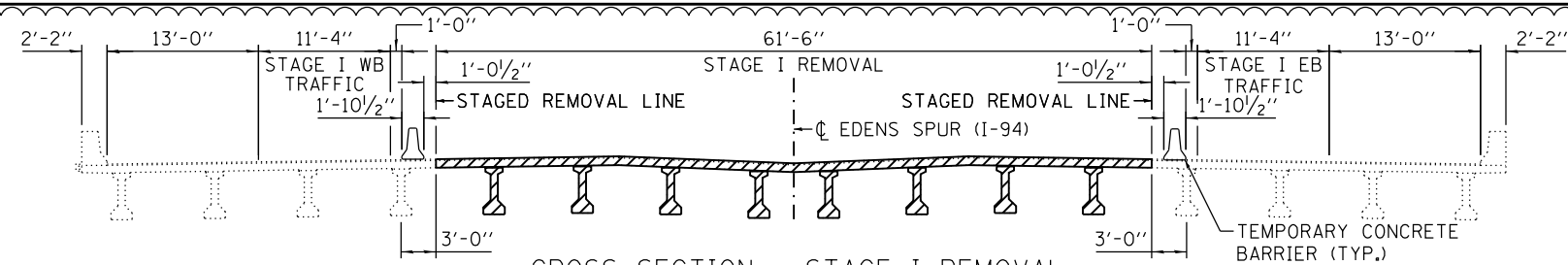


THE ILLINOIS STATE TOLL HIGHWAY AUTHORITY
2700 OGDEN AVENUE
DOWNERS GROVE,
ILLINOIS 60515

REVISIONS		
NO.	DATE	DESCRIPTION
1	3/1/2018	ADDENDUM 1

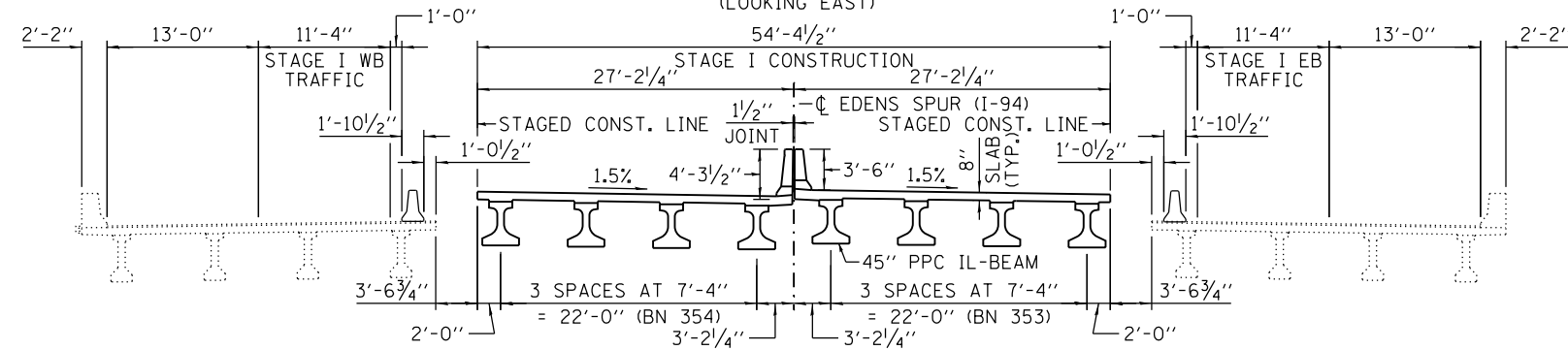
CONTRACT NO. I-18-4373
I-94 OVER W. FORK CHICAGO RIVER
(BNS 347 & 348) - FRAMING PLAN

SHT NO. SA-4
DRAWING NO. 58 OF 66



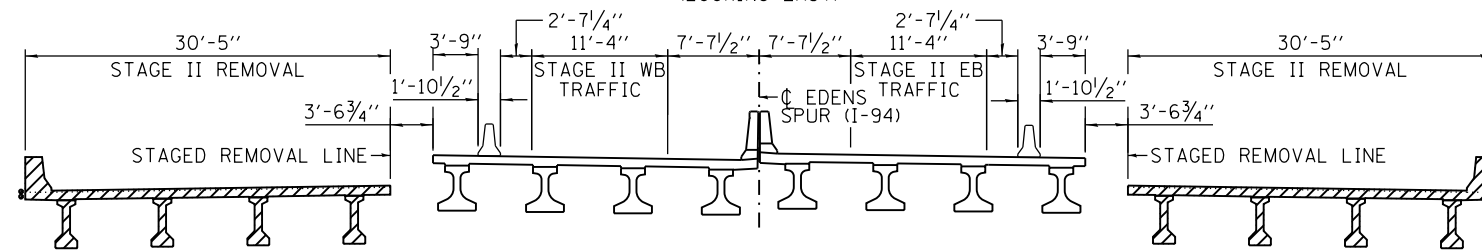
CROSS SECTION - STAGE I REMOVAL

(LOOKING EAST)



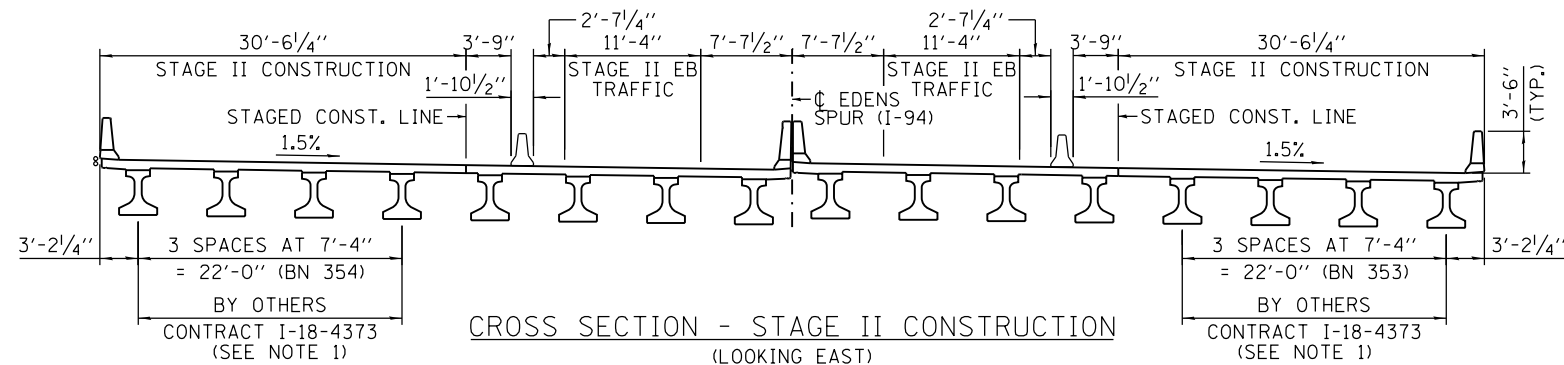
CROSS SECTION - STAGE I CONSTRUCTION

(LOOKING EAST)



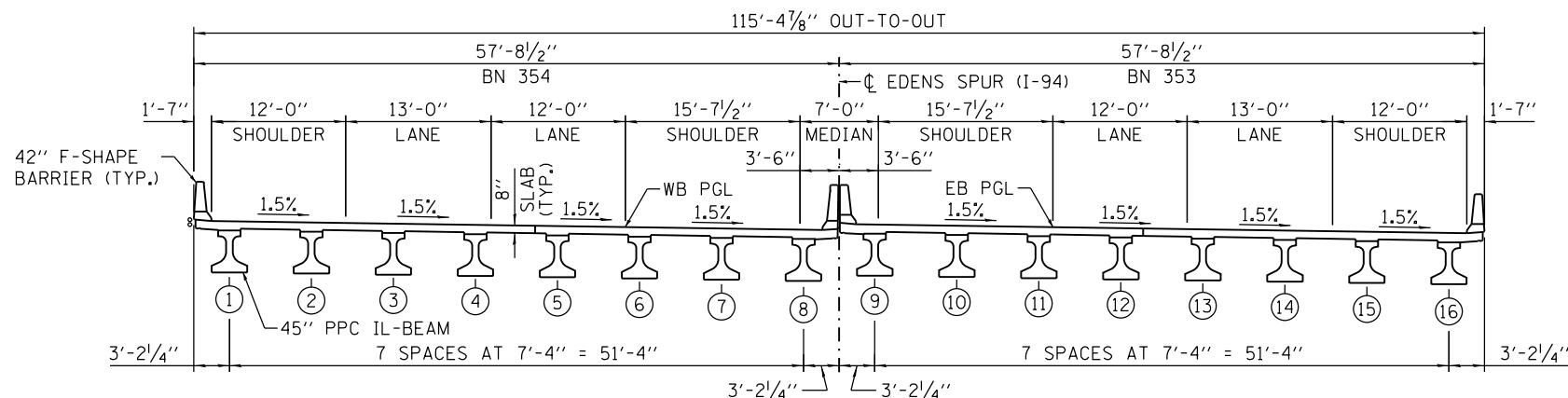
CROSS SECTION - STAGE II REMOVAL

(LOOKING EAST)



CROSS SECTION - STAGE II CONSTRUCTION

(LOOKING EAST)



PROPOSED CROSS SECTION

(LOOKING EAST)

LEGEND:

EXISTING STRUCTURE REMOVAL

NOTES:

1. BEAMS 5-12 ARE INCLUDED WITH THIS CONTRACT. BEAMS 1-4 AND 13-16 ARE INCLUDED IN CONTRACT I-18-4373.

DRAWN BY JNP DATE 03/01/2018
 CHECKED BY MDS DATE 03/01/2018



THE ILLINOIS STATE TOLL HIGHWAY AUTHORITY
 2700 OGDEN AVENUE
 DOWNERS GROVE,
 ILLINOIS 60515

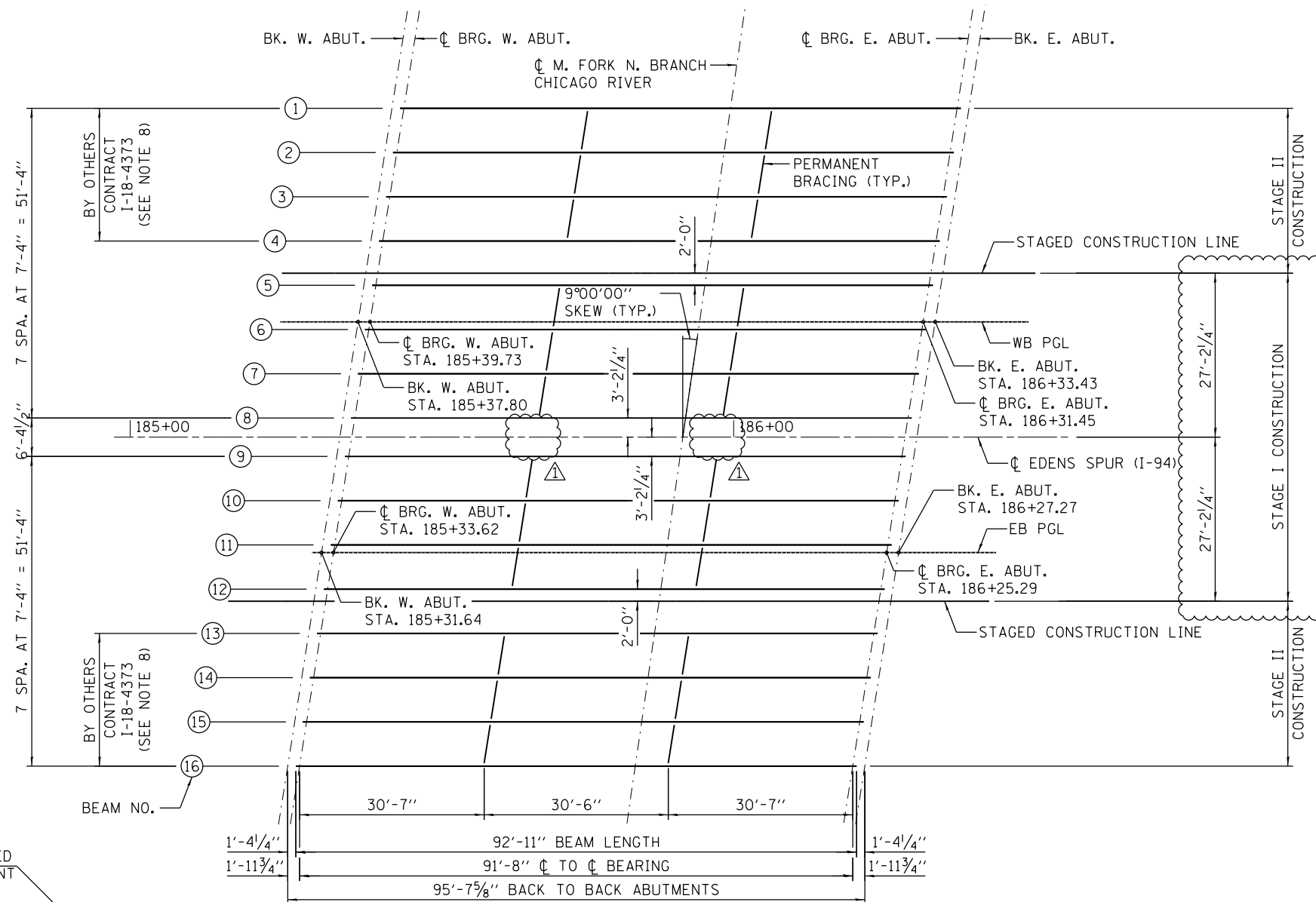
REVISIONS		
NO.	DATE	DESCRIPTION
1	3/1/2018	ADDENDUM 1

CONTRACT NO. I-18-4373
 I-94 OVER M. FORK CHICAGO RIVER
 (BNS 353 & 354) - CONSTRUCTION STAGING

SHT NO. SB-3
 DRAWING NO. 63 OF 66

NOTES:

1. ALL MATERIAL FOR BRACING SHALL BE HOT DIP GALVANIZED ACCORDING TO AASHTO M111 UNLESS OTHERWISE NOTED.
2. TWO HARDENED WASHERS ARE REQUIRED FOR EACH SET OF OVERSIZED HOLES.
3. ALL HOLES SHALL BE $\frac{1}{16}$ " ϕ UNLESS OTHERWISE NOTED.
4. $\frac{5}{16}$ " X 3" X 3" PLATE WASHERS ARE REQUIRED OVER ALL SLOTTED HOLES.
5. ALL BOLTS SHALL BE GALVANIZED ACCORDING TO AASHTO M232.
6. BRACING SHALL BE INSTALLED AS BEAMS ARE ERECTED AND TIGHTENED AS SOON AS POSSIBLE DURING ERECTION.
7. PERMANENT BRACING SHALL NOT BE PAID FOR SEPARATELY, BUT SHALL BE INCLUDED IN THE COST OF FURNISHING PRECAST PRESTRESSED CONCRETE IL45-2438 BEAMS.
8. BEAMS 5-12 ARE INCLUDED IN THIS CONTRACT. BEAMS 1-4 AND 13-16 ARE INCLUDED IN CONTRACT I-18-4373.

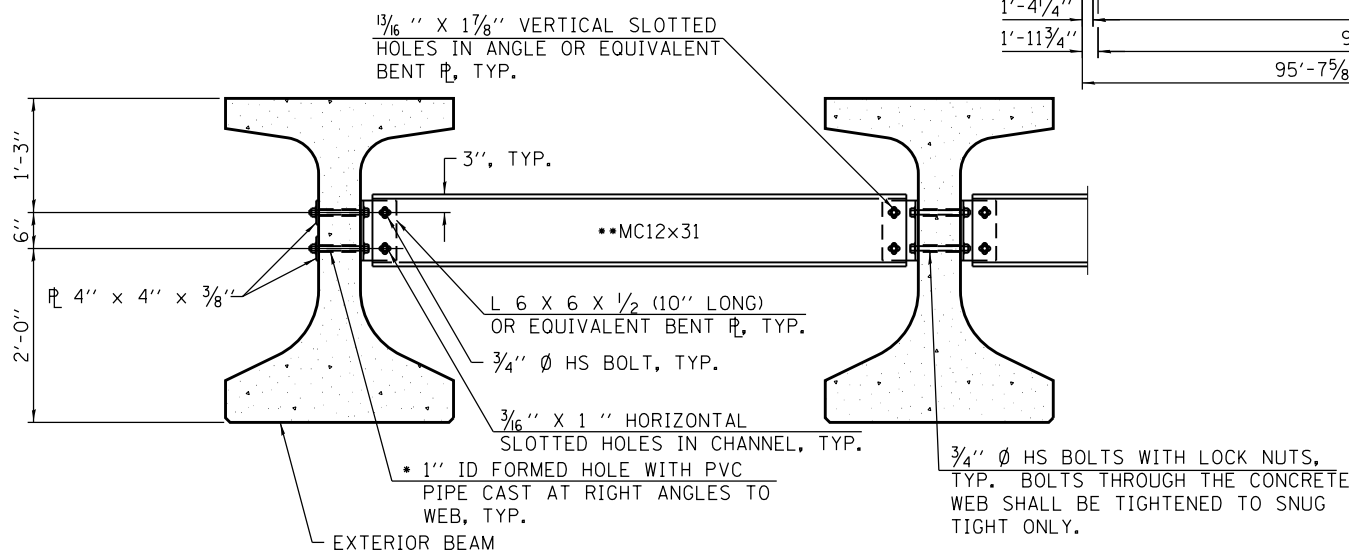


INTERIOR BEAM MOMENT TABLE

	0.5 SPAN
I	(in ⁴) 182,623
I'	(in ⁴) 542,150
S _b	(in ³) 10,045
S _b '	(in ³) 16,932
S _t	(in ³) 6,809
S _t '	(in ³) 23,592
DC1	(k/ft) 1.98
M _{DC1}	(k) 1883
DC2	(k/ft) 0.14
M _{DC2}	(k) 150
DW	(k/ft) 0.39
M _{DW}	(k) 366
M _{LL + IM}	(k) 1,590

INTERIOR BEAM REACTION TABLE

	W. ABUT.	E. ABUT.
R _{DC1}	(k) 88.6	88.6
R _{DC2}	(k) 6.5	6.5
R _{DW}	(k) 125.3	125.3
R _{LL + IM}	(k) 94.0	94.0
R _{TOTAL}	(k) 314.4	314.4



- FABRICATOR SHALL LOCATE TO MISS STRANDS WITHIN PERMISSIBLE TOLERANCES.
- ALTERNATE MC12X35 CHANNELS ARE PERMITTED TO FACILITATE MATERIAL ACQUISITION.

- I: NON-COMPOSITE MOMENT OF INERTIA OF BEAM SECTION (in⁴).
- I': COMPOSITE MOMENT OF INERTIA OF BEAM SECTION (in⁴).
- S_b: NON-COMPOSITE SECTION MODULUS FOR THE BOTTOM FIBER OF THE PRESTRESSED BEAM (in³).
- S_b': COMPOSITE SECTION MODULUS FOR THE BOTTOM FIBER OF THE PRESTRESSED BEAM (in³).
- S_t: NON-COMPOSITE SECTION MODULUS FOR THE TOP FIBER OF THE PRESTRESSED BEAM (in³).
- S_t': COMPOSITE SECTION MODULUS FOR THE TOP FIBER OF THE PRESTRESSED BEAM (in³).
- DC1: UN-FACTORED NON-COMPOSITE DEAD LOAD (kips/ft).
- M_{DC1}: UN-FACTORED MOMENT DUE TO NON-COMPOSITE DEAD LOAD (kip-ft).
- DC2: UN-FACTORED LONG-TERM COMPOSITE (SUPERIMPOSED EXCLUDING FUTURE WEARING SURFACE) DEAD LOAD (kips/ft).
- M_{DC2}: UN-FACTORED MOMENT DUE TO LONG-TERM COMPOSITE (SUPERIMPOSED EXCLUDING FUTURE WEARING SURFACE) DEAD LOAD (kip-ft).
- DW: UN-FACTORED LONG-TERM COMPOSITE (SUPERIMPOSED FUTURE WEARING SURFACE ONLY) DEAD LOAD (kips/ft).
- M_{DW}: UN-FACTORED MOMENT DUE TO LONG-TERM COMPOSITE (SUPERIMPOSED FUTURE WEARING SURFACE ONLY) DEAD LOAD (kip-ft).
- M_{LL + IM}: UN-FACTORED LIVE LOAD MOMENT PLUS DYNAMIC LOAD ALLOWANCE (IMPACT) (kip-ft).

DRAWN BY JNP DATE 03/01/2018
 CHECKED BY MDS DATE 03/01/2018



THE ILLINOIS STATE TOLL HIGHWAY AUTHORITY
 2700 OGDEN AVENUE
 DOWNERS GROVE,
 ILLINOIS 60515

REVISIONS		
NO.	DATE	DESCRIPTION
1	3/1/2018	ADDENDUM 1

CONTRACT NO. I-18-4373
 I-94 OVER M. FORK CHICAGO RIVER
 (BNS 353 & 354) - FRAMING PLAN

SHT NO. SB-4
 DRAWING NO. 64 OF 66



Capital Program

MEETING MINUTES

PROJECT NUMBER/NAME: I-18-4372 I-94 Roadway Rehabilitation and Beam Fabrication
MEETING PURPOSE: Optional Pre-Bid Meeting
MEETING DATE/TIME: 2/26/2018 11:00 AM
CHAIRPERSON: Faraj, Mohamad
LOCATION: Tollway Headquarters - Conference Room 175-Court Room
PREPARED BY: Duane O’Laughlin
ISSUED DATE: 3/1/2018

TOPICS DISCUSSED:

1. Introductions were done.
2. Diversity
 - a. DBE: 13% Goal
 - b. Veteran: 0% Goal
 - c. PILOT BID SUBMISSION PROCEDURES - Each participating firm is responsible for adhering to all modifications for submittal. Highlights of these modifications are:
 - i. Streamlines and simplifies the DBE and VOSB Utilization Plan requirements due at the time of submittal. Complete and detailed DBE/VOSB utilization plans are still required as per Tollway and Illinois policy.
 - DBE 2026-PILOT DUE AT TIME OF BID
 - DBE 2023 GFE DUE AT TIME OF BID, IF APPLICABLE
 - ii. Reduces quantity of documents due at time of bid
 - iii. Allows for five calendar days for any additional required documentation from the apparent low bidder.
 - d. EEO Workforce Participation - Established EEO goals: 19.6% Minority and 6.9% Female
 - e. ECP – Earned Credit Program
 - i. Bid Credit Cap: \$33,730
 - ii. Prime must own and submit and ECP Certificate to use a subcontractor’s ECP certificate.
3. Project Description - Refer to SP 101- Project Location MP 26.25 to 26.9 and Frontage Road (South of Waukegan Road Interchange).
 - a. Edens Spur shoulder milling and resurfacing.
 - b. Pressure relief joint removal and replacement at Plaza 24.
 - c. Frontage Road pavement milling and resurfacing.
 - d. Maintenance of traffic operations.



Capital Program

MEETING MINUTES

- e. Erosion control measures.
 - f. Installation of permanent pavement marking along Frontage Road.
 - g. Protection of existing utilities within the construction zones.
 - h. Beam fabrication for Bridge Nos. 347, 348, 353, and 354.
4. Specialty Work Items - Beam Fabrication
 5. Project Schedule
 - a. Bid Opening – March 20, 2018
 - b. NTP – May 25, 2018
 - c. Substantial Completion
 - i. July 20, 2018
 - ii. Liquidated Damages per SP 105.1.2.
 - d. Contract Completion
 - i. August 10, 2018
 - ii. Liquidated Damages per SP 105.1.1.
 - e. In order to expedite Notice to Proceed, the low apparent bidder should deliver completed Contract Documents as quickly as possible after receipt of the Notice of Intent to Award letter from the Illinois Tollway. Required documents include Performance and Payment bonds as well as Proof of Insurance as specified Supplemental Specifications, Section 107.27 and modified by contract Special Provisions Section 107.
 6. Plan Revisions
 - a. HMA Table revisions
 - b. HMA special provision
 - c. Bridge revisions for decks in one plane from parapet to parapet.
 7. Bidder Questions - The deadline is 2:00 pm on March 6, 2018, to be sent to mfaraj@getipass.com
 8. Additional Comments
 - a. Existing plans will be available at the Tollway Online Plan Room.
 - b. All bids MUST include Disclosures and Certifications otherwise the bid will be deemed non-responsive. See the section of the construction contract book, Volume I titled INSTRUCTIONS AND INFORMATION TO BIDDERS for additional information.

OPEN DISCUSSION

CC:



Capital Program

SIGN-IN SHEET

CONTRACT NUMBER/NAME: I-18-4372 I-94 Roadway Rehabilitation and Beam Fabrication
MEETING PURPOSE: Optional Pre-Bid Meeting
MEETING DATE/TIME: February 26, 2018 11:00 AM
CHAIRPERSON: Faraj, Mohamad
LOCATION: Tollway Headquarters - Conference Room 175-Court Room

ATTENDEES:

Name	Title	Initials	Organization	Phone Number	Email Address
Nick Giordano	P.E	N.G	F.H. B	(312)-343-3481	ngiordano@fhwaschen.com
Mofaraj	PM	MF	Tollway	41.3832	mfaraj@getipass.com
Jim Mayer	Eng Mgr	JFM	Pro	x3831	jmayer@getipass.com
Deanna Dinkel	Diversity	DD	Tollway	x3294	ddinkeleg@getipass.com
Matt Santofred	PM	MOS	TransSystems	847-407-5735	msantofred@trans-systems.com
Dan Gancarz	Materials	DG	ARA	217-621-8300	dgancarz@getipass.com
Travis Khese	PM	TRX	d'Esposito	312-757-0707	tkhese@d'esposito.com
DUANE O'LAUGHLIN	PM	DO	Ciorba	773-355-2949	dolaughlin@ciorba.com